



[Go to Product page](#)

Datasheet for ABIN7161600
anti-NIF3L1 antibody (AA 1-377)

3 Images

Overview

Quantity:	100 µg
Target:	NIF3L1
Binding Specificity:	AA 1-377
Reactivity:	Human
Host:	Rabbit
Clonality:	Polyclonal
Conjugate:	This NIF3L1 antibody is un-conjugated
Application:	ELISA, Western Blotting (WB), Immunohistochemistry (IHC)

Product Details

Immunogen:	Recombinant Human NIF3-like protein 1 protein (1-377AA)
Isotype:	IgG
Cross-Reactivity:	Human
Purification:	>95%, Protein G purified

Target Details

Target:	NIF3L1
Alternative Name:	NIF3L1 (NIF3L1 Products)
Background:	Background: May function as a transcriptional corepressor through its interaction with COPS2, negatively regulating the expression of genes involved in neuronal differentiation.

Target Details

Aliases: ALS2CR1 antibody, Amyotrophic lateral sclerosis 2 (juvenile) chromosome region, candidate 1 antibody, Amyotrophic lateral sclerosis 2 chromosomal region candidate gene 1 protein antibody, CALS-7 antibody, MDS015 antibody, Ngg1 interacting factor 3-like 1 antibody, NIF3 (Ngg1 interacting factor 3, S.pombe homolog)-like 1 antibody, NIF3 NGG1 interacting factor 3-like 1 (S. pombe) antibody, NIF3 NGG1 interacting factor 3-like 1 antibody, NIF3-like protein 1 antibody, NIF3L_HUMAN antibody, Nif3l1 antibody, OTTHUMP00000206190 antibody, OTTHUMP00000206191 antibody, OTTHUMP00000206192 antibody

UniProt: [Q9GZT8](#)

Application Details

Application Notes: Recommended dilution: WB:1:500-1:2000, IHC:1:20-1:200,

Restrictions: For Research Use only

Handling

Format: Liquid

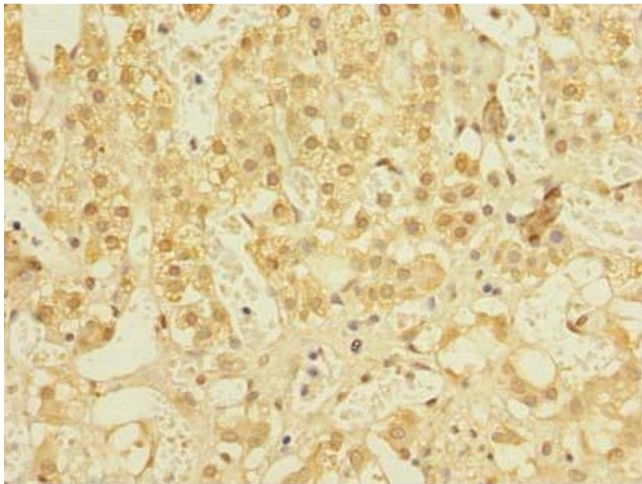
Buffer: Preservative: 0.03 % Proclin 300
Constituents: 50 % Glycerol, 0.01M PBS, PH 7.4

Preservative: ProClin

Precaution of Use: This product contains ProClin: a POISONOUS AND HAZARDOUS SUBSTANCE which should be handled by trained staff only.

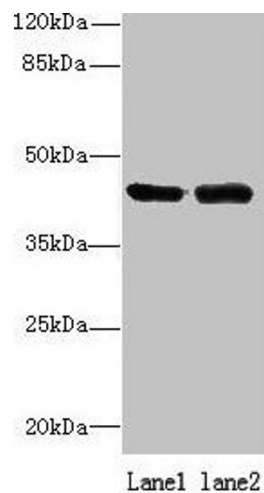
Storage: -20 °C,-80 °C

Storage Comment: Upon receipt, store at -20°C or -80°C. Avoid repeated freeze.



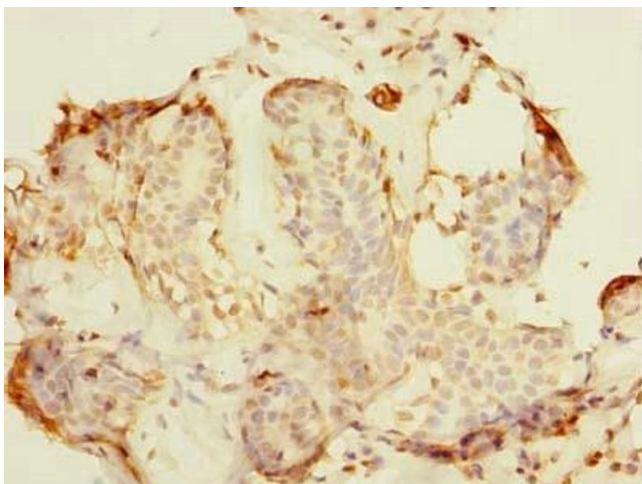
Immunohistochemistry

Image 1. Immunohistochemistry of paraffin-embedded human adrenal gland tissue using ABIN7161600 at dilution of 1:100



Western Blotting

Image 2. Western blot All lanes: NIF3L1 antibody at 0.2 μ g/mL Lane 1: 293T whole cell lysate Lane 2: MDA-MB-231 whole cell lysate Secondary Goat polyclonal to rabbit IgG at 1/10000 dilution Predicted band size: 42, 39, 33 kDa Observed band size: 42 kDa



Immunohistochemistry

Image 3. Immunohistochemistry of paraffin-embedded human breast cancer using ABIN7161600 at dilution of 1:100