



[Go to Product page](#)

Datasheet for ABIN7161608  
**anti-NINL antibody (AA 1-190)**

2 Images

### Overview

Quantity:	100 µL
Target:	NINL
Binding Specificity:	AA 1-190
Reactivity:	Human
Host:	Rabbit
Clonality:	Polyclonal
Conjugate:	This NINL antibody is un-conjugated
Application:	ELISA, Immunohistochemistry (IHC)

### Product Details

Immunogen:	Recombinant Human Ninein-like protein (1-190AA)
Isotype:	IgG
Cross-Reactivity:	Human
Purification:	Antigen Affinity Purified

### Target Details

Target:	NINL
Alternative Name:	NINL ( <a href="#">NINL Products</a> )
Background:	Background: Involved in the microtubule organization in interphase cells. Overexpression induces the fragmentation of the Golgi, and causes lysosomes to disperse toward the cell

## Target Details

periphery, it also interferes with mitotic spindle assembly. May play a role in ovarian carcinogenesis.

Aliases: NINL antibody, KIAA0980 antibody, NLP antibody, Ninein-like protein antibody

UniProt: [Q9Y2I6](#)

Pathways: [M Phase](#), [SARS-CoV-2 Protein Interactome](#)

## Application Details

Application Notes: Recommended dilution: IHC:1:20-1:200,

Restrictions: For Research Use only

## Handling

Format: Liquid

Buffer: PBS with 0.02 % sodium azide, 50 % glycerol, pH 7.3.

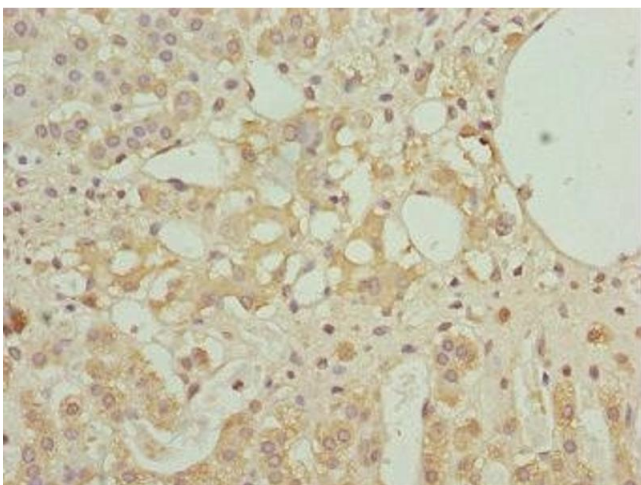
Preservative: Sodium azide

Precaution of Use: This product contains Sodium azide: a POISONOUS AND HAZARDOUS SUBSTANCE which should be handled by trained staff only.

Storage: -20 °C,-80 °C

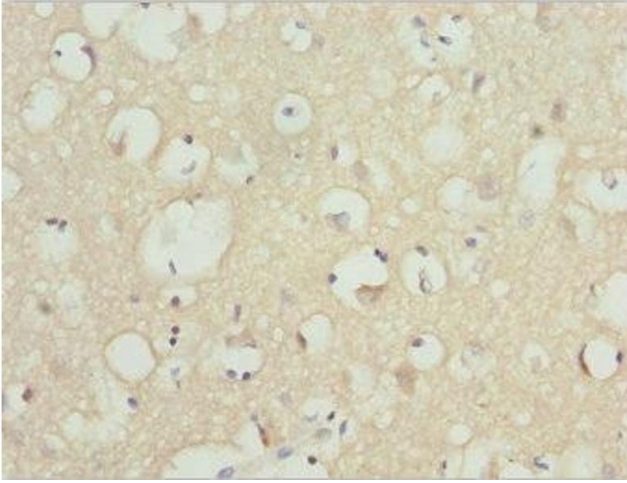
Storage Comment: Upon receipt, store at -20°C or -80°C. Avoid repeated freeze.

## Images



### Immunohistochemistry

**Image 1.** Immunohistochemistry of paraffin-embedded human adrenal gland tissue using ABIN7161608 at dilution of 1:100



### Immunohistochemistry

**Image 2.** Immunohistochemistry of paraffin-embedded human brain tissue using ABIN7161608 at dilution of 1:100