



[Go to Product page](#)

Datasheet for ABIN7161641
anti-KLRC2 antibody (AA 94-231)

1 Image

Overview

Quantity:	100 µg
Target:	KLRC2
Binding Specificity:	AA 94-231
Reactivity:	Human
Host:	Rabbit
Clonality:	Polyclonal
Conjugate:	This KLRC2 antibody is un-conjugated
Application:	ELISA, Immunohistochemistry (IHC)

Product Details

Immunogen:	Recombinant Human NKG2-C type II integral membrane protein (94-231AA)
Isotype:	IgG
Cross-Reactivity:	Human
Purification:	>95%, Protein G purified

Target Details

Target:	KLRC2
Alternative Name:	KLRC2 (KLRC2 Products)
Background:	Background: Plays a role as a receptor for the recognition of MHC class I HLA-E molecules by NK cells and some cytotoxic T-cells.

Target Details

Aliases: CD antigen CD159c antibody, CD159 antigen like family member C antibody, CD159 antigen-like family member C antibody, CD159c antibody, Killer cell lectin like receptor subfamily C, member 2 antibody, KLRC2 antibody, NK cell receptor C antibody, NKG2-C type II integral membrane protein antibody, NKG2-C-activating NK receptor antibody, NKG2C activating NK receptor antibody, NKG2C antibody, NKG2C_HUMAN antibody

UniProt: [P26717](#)

Application Details

Application Notes: Recommended dilution: IHC:1:20-1:200,

Restrictions: For Research Use only

Handling

Format: Liquid

Buffer: Preservative: 0.03 % Proclin 300
Constituents: 50 % Glycerol, 0.01M PBS, PH 7.4

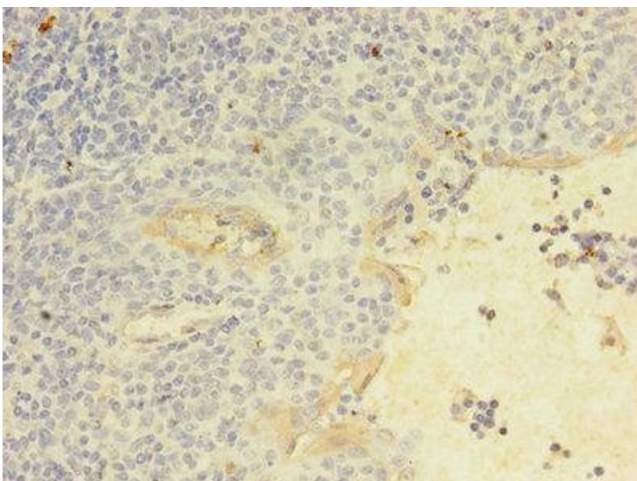
Preservative: ProClin

Precaution of Use: This product contains ProClin: a POISONOUS AND HAZARDOUS SUBSTANCE which should be handled by trained staff only.

Storage: -20 °C,-80 °C

Storage Comment: Upon receipt, store at -20°C or -80°C. Avoid repeated freeze.

Images



Immunohistochemistry

Image 1. Immunohistochemistry of paraffin-embedded human tonsil tissue using ABIN7161641 at dilution of 1:100