

Datasheet for ABIN7161645
anti-KLRK1 antibody (AA 73-216)

3 Images

[Go to Product page](#)

Overview

Quantity:	100 µg
Target:	KLRK1
Binding Specificity:	AA 73-216
Reactivity:	Human
Host:	Rabbit
Clonality:	Polyclonal
Conjugate:	This KLRK1 antibody is un-conjugated
Application:	Western Blotting (WB), Immunohistochemistry (IHC), ELISA, Immunofluorescence (IF)

Product Details

Immunogen:	Recombinant Human NKG2-D type II integral membrane protein (73-216AA)
Isotype:	IgG
Cross-Reactivity:	Human
Purification:	>95%, Protein G purified

Target Details

Target:	KLRK1
Alternative Name:	KLRK1 (KLRK1 Products)
Background:	Background: Function as an activating and costimulatory receptor involved in immunosurveillance upon binding to various cellular stress-inducible ligands displayed at the

Target Details

surface of autologous tumor cells and virus-infected cells. Provides both stimulatory and costimulatory innate immune responses on activated killer (NK) cells, leading to cytotoxic activity. Acts as a costimulatory receptor for T-cell receptor (TCR) in CD8(+) T-cell-mediated adaptive immune responses by amplifying T-cell activation. Stimulates perforin-mediated elimination of ligand-expressing tumor cells. Signaling involves calcium influx, culminating in the expression of TNF-alpha. Participates in NK cell-mediated bone marrow graft rejection. May play a regulatory role in differentiation and survival of NK cells. Binds to ligands belonging to various subfamilies of MHC class I-related glycoproteins including MICA, MICB, RAET1E, RAET1G, ULBP1, ULBP2, ULBP3 (ULBP2>ULBP1>ULBP3) and ULBP4.

Aliases: CD314 antibody, CD314 antigen antibody, D12S2489E antibody, Killer cell lectin like receptor subfamily K member 1 antibody, Killer cell lectin-like receptor subfamily K member 1 antibody, KLR antibody, KLRC4 KLRK1 readthrough antibody, KLRK1 antibody, NK cell receptor D antibody, NK lectin-like receptor antibody, NKG2 D activating NK receptor antibody, NKG2 D type II integral membrane protein antibody, NKG2-D antibody, NKG2-D type II integral membrane protein antibody, NKG2-D-activating NK receptor antibody, Nkg2d antibody, NKG2D_HUMAN antibody, NKLLR antibody, NKR P2 antibody, Nkrp2 antibody

UniProt: [P26718](#)

Pathways: [Activation of Innate immune Response](#), [Cellular Response to Molecule of Bacterial Origin](#), [Regulation of Leukocyte Mediated Immunity](#), [Positive Regulation of Immune Effector Process](#)

Application Details

Application Notes: Recommended dilution: WB:1:500-1:5000, IHC:1:20-1:200, IF:1:50-1:200,

Restrictions: For Research Use only

Handling

Format: Liquid

Buffer: Preservative: 0.03 % Proclin 300
Constituents: 50 % Glycerol, 0.01M PBS, PH 7.4

Preservative: ProClin

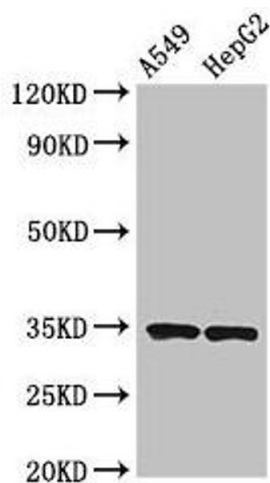
Precaution of Use: This product contains ProClin: a POISONOUS AND HAZARDOUS SUBSTANCE which should be handled by trained staff only.

Storage: -20 °C,-80 °C

Handling

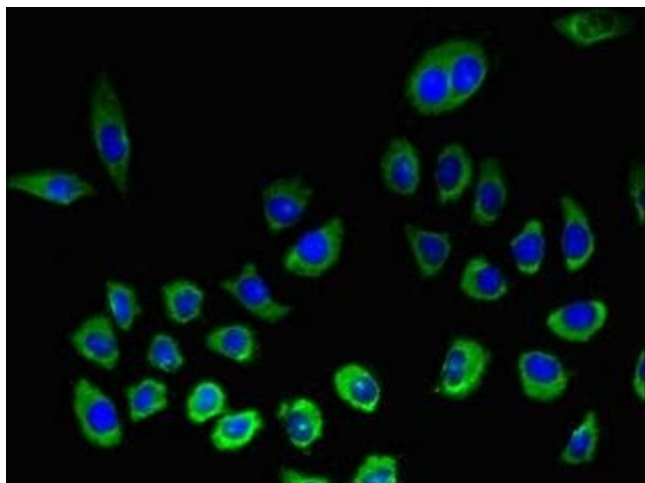
Storage Comment: Upon receipt, store at -20°C or -80°C. Avoid repeated freeze.

Images



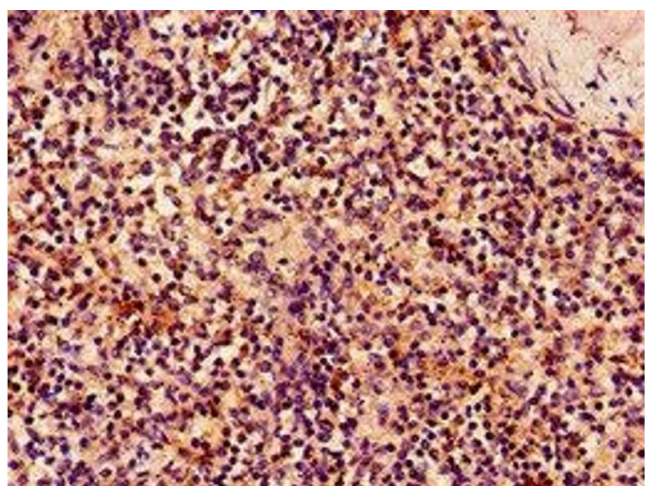
Western Blotting

Image 1. Western Blot Positive WB detected in: A549 whole cell lysate, HepG2 whole cell lysate All lanes: KLRK1 antibody at 3.7 µg/mL Secondary Goat polyclonal to rabbit IgG at 1/50000 dilution Predicted band size: 26 kDa Observed band size: 34 kDa



Immunofluorescence

Image 2. Immunofluorescent analysis of A549 cells using ABIN7161645 at dilution of 1:100 and Alexa Fluor 488-conjugated AffiniPure Goat Anti-Rabbit IgG(H+L)



Immunohistochemistry

Image 3. Immunohistochemistry of paraffin-embedded human spleen tissue using ABIN7161645 at dilution of 1:100