

Datasheet for ABIN7161649
anti-KLRC3 antibody (AA 94-240)[Go to Product page](#)

2 Images

Overview

Quantity:	100 µg
Target:	KLRC3
Binding Specificity:	AA 94-240
Reactivity:	Human
Host:	Rabbit
Clonality:	Polyclonal
Conjugate:	This KLRC3 antibody is un-conjugated
Application:	ELISA, Immunofluorescence (IF), Immunohistochemistry (IHC)

Product Details

Immunogen:	Recombinant Human NKG2-E type II integral membrane protein (94-240AA)
Isotype:	IgG
Cross-Reactivity:	Human
Purification:	>95%, Protein G purified

Target Details

Target:	KLRC3
Alternative Name:	KLRC3 (KLRC3 Products)
Background:	Background: Plays a role as a receptor for the recognition of MHC class I HLA-E molecules by NK cells and some cytotoxic T-cells.

Target Details

Aliases: Killer cell lectin like receptor subfamily C member 3 antibody, KLRC 3 antibody, KLRC3 antibody, NK cell receptor E antibody, NKG2 E activating NK receptor antibody, NKG2 E antibody, NKG2 E type II integral membrane protein antibody, NKG2-E type II integral membrane protein antibody, NKG2-E-activating NK receptor antibody, NKG2E activating NK receptor antibody, NKG2E antibody, NKG2E type II integral membrane protein antibody, NKG2E_HUMAN antibody

UniProt: [Q07444](#)

Application Details

Application Notes: Recommended dilution: IHC:1:200-1:500, IF:1:50-1:200,

Restrictions: For Research Use only

Handling

Format: Liquid

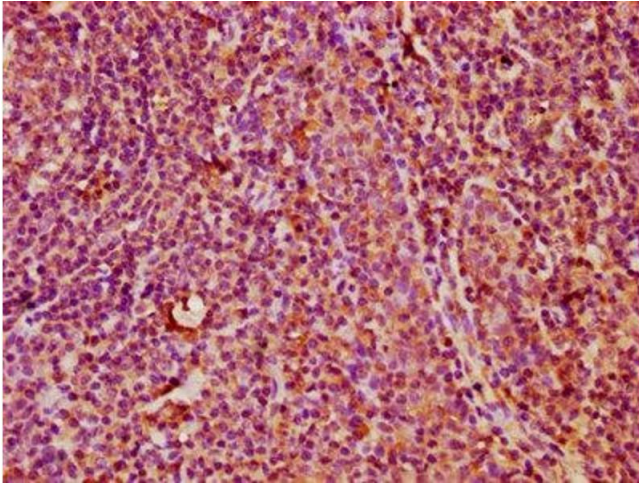
Buffer: Preservative: 0.03 % Proclin 300
Constituents: 50 % Glycerol, 0.01M PBS, pH 7.4

Preservative: ProClin

Precaution of Use: This product contains ProClin: a POISONOUS AND HAZARDOUS SUBSTANCE which should be handled by trained staff only.

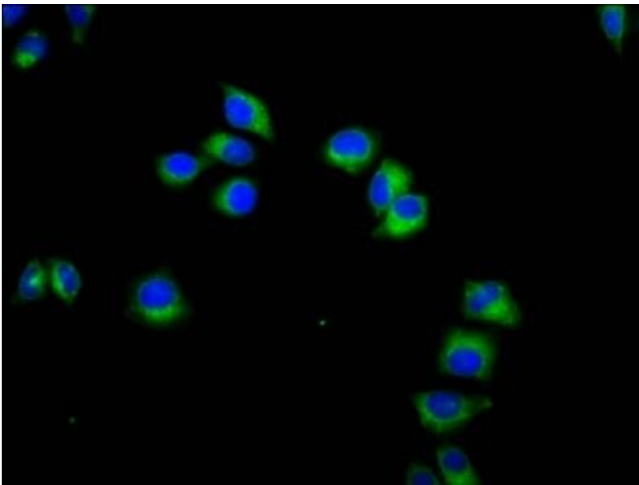
Storage: -20 °C, -80 °C

Storage Comment: Upon receipt, store at -20°C or -80°C. Avoid repeated freeze.



Immunohistochemistry

Image 1. IHC image of ABIN7161649 diluted at 1:400 and staining in paraffin-embedded human tonsil tissue performed on a Leica Bond™ system. After dewaxing and hydration, antigen retrieval was mediated by high pressure in a citrate buffer (pH 6.0). Section was blocked with 10% normal goat serum 30min at RT. Then primary antibody (1% BSA) was incubated at 4°C overnight. The primary is detected by a biotinylated secondary antibody and visualized using an HRP conjugated SP system.



Immunofluorescence

Image 2. Immunofluorescence staining of HeLa cells with ABIN7161649 at 1:133, counter-stained with DAPI. The cells were fixed in 4% formaldehyde, permeabilized using 0.2% Triton X-100 and blocked in 10% normal Goat Serum. The cells were then incubated with the antibody overnight at 4°C. The secondary antibody was Alexa Fluor 488-conjugated AffiniPure Goat Anti-Rabbit IgG(H+L).