

Datasheet for ABIN7161669  
**anti-NOMO1 antibody (AA 918-1044)**[Go to Product page](#)

## 4 Images

## Overview

Quantity:	100 µg
Target:	NOMO1
Binding Specificity:	AA 918-1044
Reactivity:	Human
Host:	Rabbit
Clonality:	Polyclonal
Conjugate:	This NOMO1 antibody is un-conjugated
Application:	ELISA, Immunohistochemistry (IHC), Western Blotting (WB), Immunofluorescence (IF)

## Product Details

Immunogen:	Recombinant Human Nodal modulator 1 protein (918-1044AA)
Isotype:	IgG
Cross-Reactivity:	Human
Purification:	>95%, Protein G purified

## Target Details

Target:	NOMO1
Alternative Name:	NOMO1 ( <a href="#">NOMO1 Products</a> )
Background:	Background: May antagonize Nodal signaling. Aliases: Nodal modulator 1 antibody, NOMO 1 antibody, Nomo antibody, NOMO1 antibody,

## Target Details

NOM01\_HUMAN antibody, PM5 antibody, pM5 protein antibody, pM5 protein telomeric copy antibody

UniProt: [Q15155](#)

## Application Details

Application Notes: Recommended dilution: WB:1:500-1:5000, IHC:1:20-1:200, IF:1:20-1:200,

Restrictions: For Research Use only

## Handling

Format: Liquid

Buffer: Preservative: 0.03 % Proclin 300  
Constituents: 50 % Glycerol, 0.01M PBS, pH 7.4

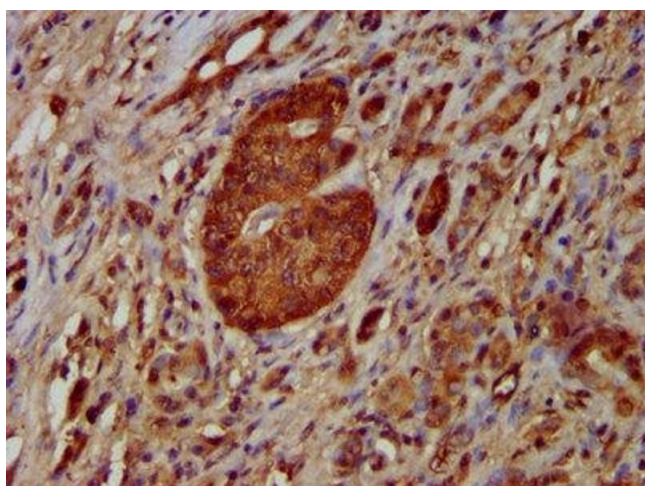
Preservative: ProClin

Precaution of Use: This product contains ProClin: a POISONOUS AND HAZARDOUS SUBSTANCE which should be handled by trained staff only.

Storage: -20 °C,-80 °C

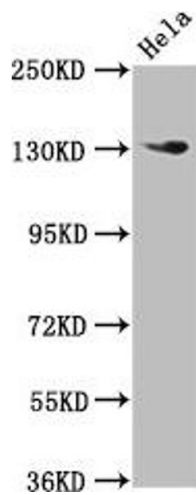
Storage Comment: Upon receipt, store at -20°C or -80°C. Avoid repeated freeze.

## Images



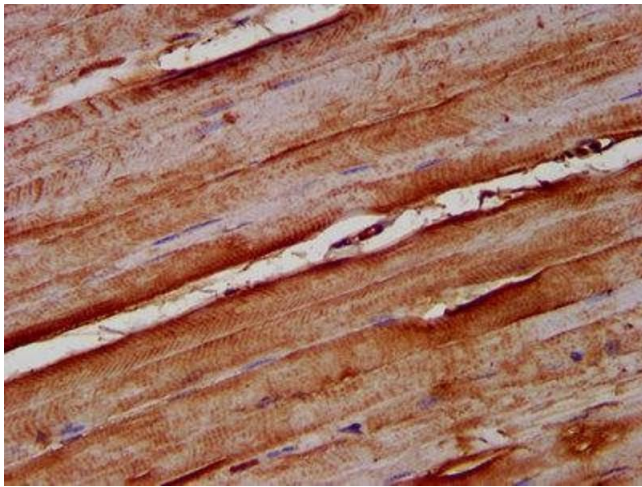
### Immunohistochemistry

**Image 1.** IHC image of ABIN7161669 diluted at 1:100 and staining in paraffin-embedded human pancreatic cancer performed on a Leica Bond™ system. After dewaxing and hydration, antigen retrieval was mediated by high pressure in a citrate buffer (pH 6.0). Section was blocked with 10% normal goat serum 30min at RT. Then primary antibody (1% BSA) was incubated at 4°C overnight. The primary is detected by a biotinylated secondary antibody and visualized using an HRP conjugated SP system.



#### Western Blotting

**Image 2.** Western Blot Positive WB detected in: HeLa whole cell lysate All lanes: NOMO1 antibody at 3 µg/mL Secondary Goat polyclonal to rabbit IgG at 1/50000 dilution Predicted band size: 135 kDa Observed band size: 135 kDa



#### Immunohistochemistry

**Image 3.** IHC image of ABIN7161669 diluted at 1:100 and staining in paraffin-embedded human skeletal muscle tissue performed on a Leica Bond™ system. After dewaxing and hydration, antigen retrieval was mediated by high pressure in a citrate buffer (pH 6.0). Section was blocked with 10% normal goat serum 30min at RT. Then primary antibody (1% BSA) was incubated at 4°C overnight. The primary is detected by a biotinylated secondary antibody and visualized using an HRP conjugated SP system.

Please check the [product details page](#) for more images. Overall 4 images are available for ABIN7161669.