



[Go to Product page](#)

Datasheet for ABIN7161726  
**anti-NLE1 antibody (AA 206-485)**

3 Images

### Overview

Quantity:	100 µL
Target:	NLE1
Binding Specificity:	AA 206-485
Reactivity:	Human
Host:	Rabbit
Clonality:	Polyclonal
Conjugate:	This NLE1 antibody is un-conjugated
Application:	Western Blotting (WB), ELISA, Immunohistochemistry (IHC)

### Product Details

Immunogen:	Recombinant Human Notchless protein homolog 1 protein (206-485AA)
Isotype:	IgG
Cross-Reactivity:	Human
Purification:	Antigen Affinity Purified

### Target Details

Target:	NLE1
Alternative Name:	NLE1 ( <a href="#">NLE1 Products</a> )
Background:	Background: Plays a role in regulating Notch activity. Plays a role in regulating the expression of CDKN1A and several members of the Wnt pathway, probably via its effects on Notch activity.

## Target Details

Required during embryogenesis for inner mass cell survival (By similarity).

Aliases: AL022765 antibody, BC018399 antibody, FLJ10458 antibody, NLE 1 antibody, Nle antibody, NLE1 antibody, NLE1\_HUMAN antibody, Notchless gene homolog antibody, Notchless homolog 1 (Drosophila) antibody, Notchless homolog 1 antibody, Notchless protein homolog 1 antibody

UniProt: [Q9NVX2](#)

## Application Details

Application Notes: Recommended dilution: WB:1:1000-1:5000, IHC:1:20-1:200,

Restrictions: For Research Use only

## Handling

Format: Liquid

Buffer: PBS with 0.02 % sodium azide, 50 % glycerol, pH 7.3.

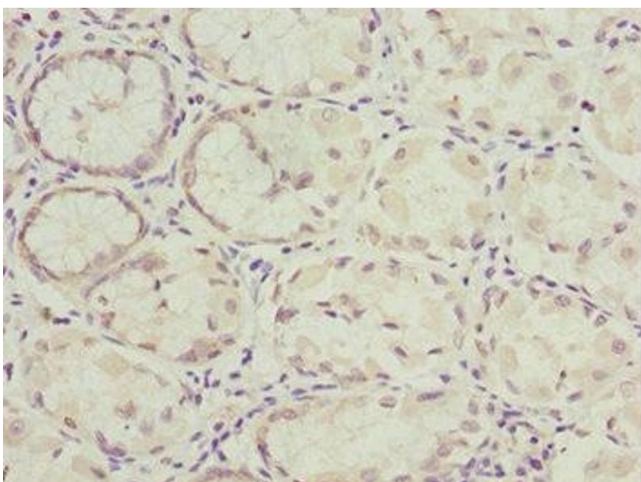
Preservative: Sodium azide

Precaution of Use: This product contains Sodium azide: a POISONOUS AND HAZARDOUS SUBSTANCE which should be handled by trained staff only.

Storage: -20 °C,-80 °C

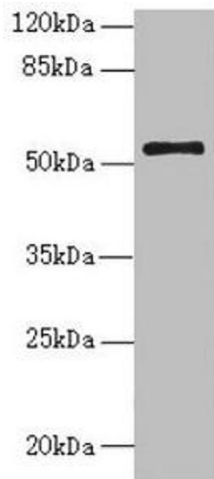
Storage Comment: Upon receipt, store at -20°C or -80°C. Avoid repeated freeze.

## Images



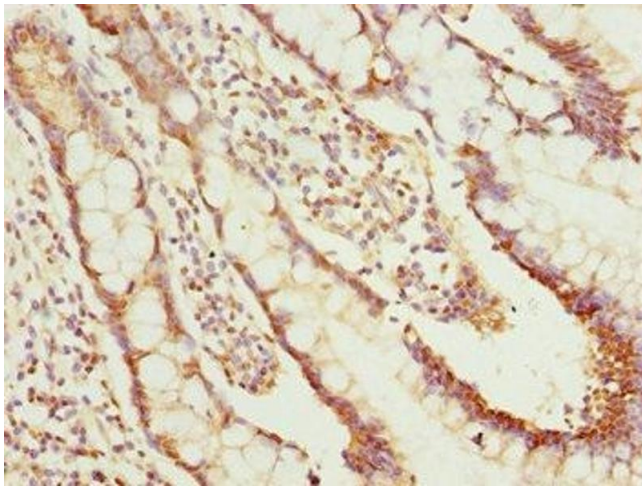
### Immunohistochemistry

**Image 1.** Immunohistochemistry of paraffin-embedded human gastric cancer using ABIN7161726 at dilution of 1:100



### Western Blotting

**Image 2.** Western blot All lanes: NLE1 antibody at 1.48  $\mu$ g/mL + PC-3 whole cell lysate Secondary Goat polyclonal to rabbit IgG at 1/10000 dilution Predicted band size: 54, 22 kDa Observed band size: 54 kDa



### Immunohistochemistry

**Image 3.** Immunohistochemistry of paraffin-embedded human small intestine tissue using ABIN7161726 at dilution of 1:100