



[Go to Product page](#)

Datasheet for ABIN7161731
anti-NPC2 antibody (AA 20-151)

2 Images

Overview

Quantity:	100 µg
Target:	NPC2
Binding Specificity:	AA 20-151
Reactivity:	Human
Host:	Rabbit
Clonality:	Polyclonal
Conjugate:	This NPC2 antibody is un-conjugated
Application:	ELISA, Immunohistochemistry (IHC), Immunofluorescence (IF)

Product Details

Immunogen:	Recombinant Human NPC intracellular cholesterol transporter 2 protein (20-151AA)
Isotype:	IgG
Cross-Reactivity:	Human
Purification:	>95%, Protein G purified

Target Details

Target:	NPC2
Alternative Name:	NPC2 (NPC2 Products)
Background:	Background: Intracellular cholesterol transporter which acts in concert with NPC1 and plays an important role in the egress of cholesterol from the endosomal/lysosomal compartment. Both

Target Details

NPC1 and NPC2 function as the cellular 'tag team duo' (TTD) to catalyze the mobilization of cholesterol within the multivesicular environment of the late endosome (LE) to effect egress through the limiting bilayer of the LE. NPC2 binds unesterified cholesterol that has been released from LDLs in the lumen of the late endosomes/lysosomes and transfers it to the cholesterol-binding pocket of the N-terminal domain of NPC1. Cholesterol binds to NPC1 with the hydroxyl group buried in the binding pocket and is exported from the limiting membrane of late endosomes/lysosomes to the ER and plasma membrane by an unknown mechanism. The secreted form of NPC2 regulates biliary cholesterol secretion via stimulation of ABCG5/ABCG8-mediated cholesterol transport.

Aliases: EDDM1 antibody, Epididymal protein 1 antibody, Epididymal secretory protein antibody, Epididymal secretory protein E1 antibody, hE1 antibody, Human epididymis-specific protein 1 antibody, Niemann-Pick disease type C2 antibody, Niemann-Pick disease type C2 protein antibody, NPC intracellular cholesterol transporter 2 antibody, NPC2 antibody, NPC2_HUMAN antibody, Tissue specific secretory protein antibody

UniProt: [P61916](#)

Pathways: [SARS-CoV-2 Protein Interactome](#)

Application Details

Application Notes: Recommended dilution: IHC:1:20-1:200, IF:1:50-1:200,

Restrictions: For Research Use only

Handling

Format: Liquid

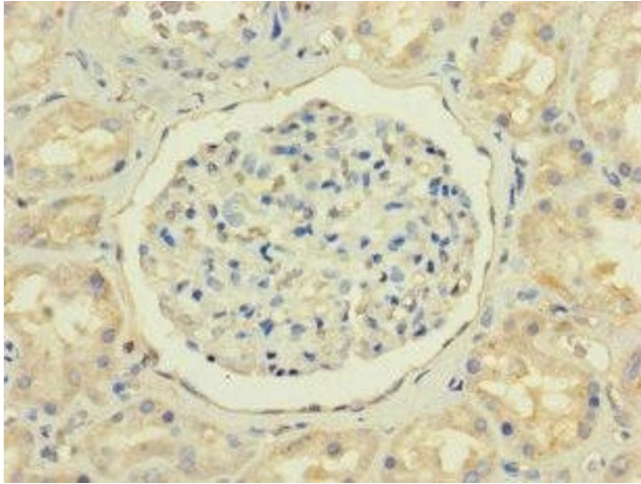
Buffer: Preservative: 0.03 % Proclin 300
Constituents: 50 % Glycerol, 0.01M PBS, PH 7.4

Preservative: ProClin

Precaution of Use: This product contains ProClin: a POISONOUS AND HAZARDOUS SUBSTANCE which should be handled by trained staff only.

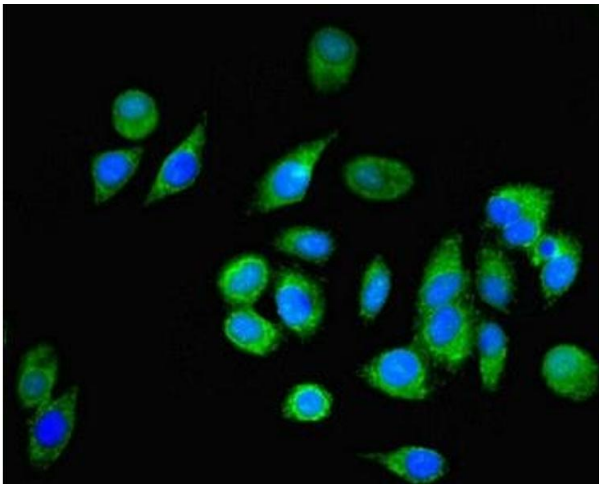
Storage: -20 °C,-80 °C

Storage Comment: Upon receipt, store at -20°C or -80°C. Avoid repeated freeze.



Immunohistochemistry

Image 1. Immunohistochemistry of paraffin-embedded human kidney tissue using ABIN7161731 at dilution of 1:100



Immunofluorescence

Image 2. Immunofluorescent analysis of A549 cells using ABIN7161731 at dilution of 1:100 and Alexa Fluor 488-conjugated AffiniPure Goat Anti-Rabbit IgG(H+L)