



[Go to Product page](#)

Datasheet for ABIN7161771
anti-NFE2L3 antibody (AA 132-260)

2 Images

Overview

Quantity:	100 µg
Target:	NFE2L3
Binding Specificity:	AA 132-260
Reactivity:	Human
Host:	Rabbit
Clonality:	Polyclonal
Conjugate:	This NFE2L3 antibody is un-conjugated
Application:	Western Blotting (WB), ELISA, Immunohistochemistry (IHC)

Product Details

Immunogen:	Recombinant Human Nuclear factor erythroid 2-related factor 3 protein (132-260AA)
Isotype:	IgG
Cross-Reactivity:	Human
Purification:	>95%, Protein G purified

Target Details

Target:	NFE2L3
Alternative Name:	NFE2L3 (NFE2L3 Products)
Background:	Background: Activates erythroid-specific, globin gene expression. Aliases: NFE2L3 antibody, NRF3 antibody, Nuclear factor erythroid 2-related factor 3 antibody,

Target Details

NF-E2-related factor 3 antibody, NFE2-related factor 3 antibody, Nuclear factor antibody, erythroid derived 2 antibody, like 3 antibody

UniProt: [Q9Y4A8](#)

Application Details

Application Notes: Recommended dilution: WB:1:500-1:5000, IHC:1:500-1:1000,

Restrictions: For Research Use only

Handling

Format: Liquid

Buffer: Preservative: 0.03 % Proclin 300
Constituents: 50 % Glycerol, 0.01M PBS, pH 7.4

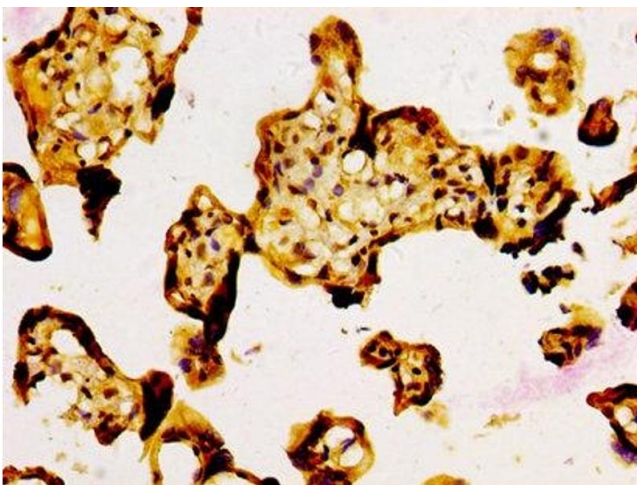
Preservative: ProClin

Precaution of Use: This product contains ProClin: a POISONOUS AND HAZARDOUS SUBSTANCE which should be handled by trained staff only.

Storage: -20 °C,-80 °C

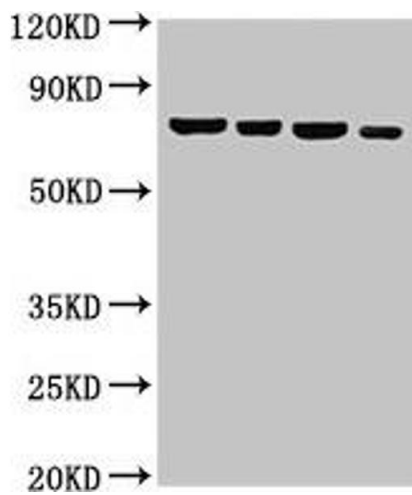
Storage Comment: Upon receipt, store at -20°C or -80°C. Avoid repeated freeze.

Images



Immunohistochemistry

Image 1. IHC image of ABIN7161771 diluted at 1:500 and staining in paraffin-embedded human placenta tissue performed on a Leica Bond™ system. After dewaxing and hydration, antigen retrieval was mediated by high pressure in a citrate buffer (pH 6.0). Section was blocked with 10% normal goat serum 30min at RT. Then primary antibody (1% BSA) was incubated at 4°C overnight. The primary is detected by a biotinylated secondary antibody and visualized using an HRP conjugated SP system.



Western Blotting

Image 2. Western Blot Positive WB detected in: HeLa whole cell lysate, U87 whole cell lysate, 293T whole cell lysate, Jurkat whole cell lysate All lanes: NFE2L3 antibody at 3 μ g/mL Secondary Goat polyclonal to rabbit IgG at 1/50000 dilution Predicted band size: 77 kDa Observed band size: 77 kDa