

Datasheet for ABIN7161797  
**anti-NFATC3 antibody (AA 887-1070)**

## 3 Images

[Go to Product page](#)

## Overview

Quantity:	100 µg
Target:	NFATC3
Binding Specificity:	AA 887-1070
Reactivity:	Human
Host:	Rabbit
Clonality:	Polyclonal
Conjugate:	This NFATC3 antibody is un-conjugated
Application:	Western Blotting (WB), ELISA, Immunohistochemistry (IHC), Immunofluorescence (IF)

## Product Details

Immunogen:	Recombinant Human Nuclear factor of activated T-cells, cytoplasmic 3 protein (887-1070AA)
Isotype:	IgG
Cross-Reactivity:	Human, Rat
Purification:	>95%, Protein G purified

## Target Details

Target:	NFATC3
Alternative Name:	NFATC3 ( <a href="#">NFATC3 Products</a> )
Background:	Background: Acts as a regulator of transcriptional activation. Plays a role in the inducible expression of cytokine genes in T-cells, especially in the induction of the IL-2.

## Target Details

Aliases: C80703 antibody, cytoplasmic 3 antibody, D8ErtD281e antibody, NF AT4 antibody, NF ATc3 antibody, NF-AT4 antibody, NF-ATc3 antibody, NFAC3\_HUMAN antibody, NFAT4 antibody, NFATc3 antibody, NFATx antibody, Nuclear factor of activated T cells, cytoplasmic 3 antibody, nuclear factor of activated T cells, cytoplasmic, calcineurin dependent 3 antibody, Nuclear factor of activated T-cells antibody, T cell transcription factor NFAT4 antibody, T-cell transcription factor NFAT4 antibody

UniProt: [Q12968](#)

Pathways: [RTK Signaling](#), [WNT Signaling](#), [Fc-epsilon Receptor Signaling Pathway](#), [Chromatin Binding](#)

## Application Details

Application Notes: Recommended dilution: WB:1:1000-1:5000, IHC:1:200-1:500, IF:1:50-1:200,

Restrictions: For Research Use only

## Handling

Format: Liquid

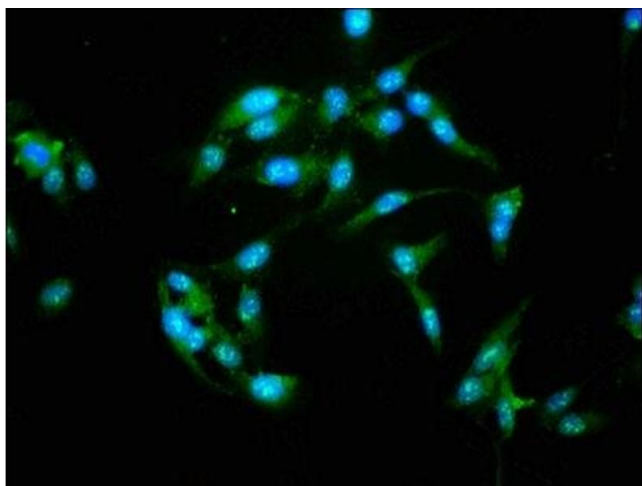
Buffer: Preservative: 0.03 % Proclin 300  
Constituents: 50 % Glycerol, 0.01M PBS, pH 7.4

Preservative: ProClin

Precaution of Use: This product contains ProClin: a POISONOUS AND HAZARDOUS SUBSTANCE which should be handled by trained staff only.

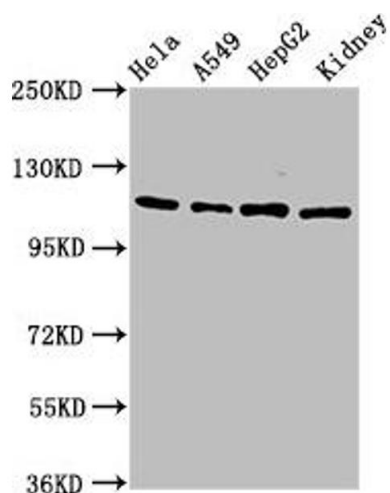
Storage: -20 °C, -80 °C

Storage Comment: Upon receipt, store at -20°C or -80°C. Avoid repeated freeze.



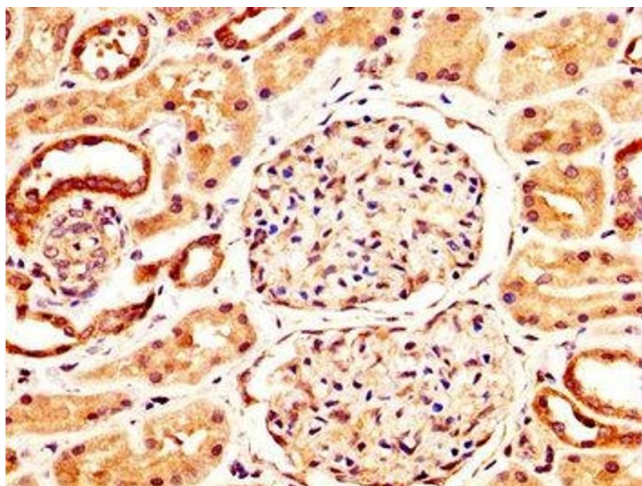
### Immunofluorescence

**Image 1.** Immunofluorescence staining of HeLa cells with ABIN7161797 at 1:155, counter-stained with DAPI. The cells were fixed in 4% formaldehyde, permeabilized using 0.2% Triton X-100 and blocked in 10% normal Goat Serum. The cells were then incubated with the antibody overnight at 4°C. The secondary antibody was Alexa Fluor 488-conjugated AffiniPure Goat Anti-Rabbit IgG(H+L).



### Western Blotting

**Image 2.** Western Blot Positive WB detected in: HeLa whole cell lysate, A549 whole cell lysate, HepG2 whole cell lysate, Rat kidney tissue. All lanes: NFATC3 antibody at 4.6 µg/mL. Secondary Goat polyclonal to rabbit IgG at 1/50000 dilution. Predicted band size: 116, 113, 78, 81 kDa. Observed band size: 116 kDa.



### Immunohistochemistry

**Image 3.** IHC image of ABIN7161797 diluted at 1:400 and staining in paraffin-embedded human kidney tissue performed on a Leica Bond™ system. After dewaxing and hydration, antigen retrieval was mediated by high pressure in a citrate buffer (pH 6.0). Section was blocked with 10% normal goat serum 30min at RT. Then primary antibody (1% BSA) was incubated at 4°C overnight. The primary is detected by a biotinylated secondary antibody and visualized using an HRP conjugated SP system.