



[Go to Product page](#)

Datasheet for ABIN7161801
anti-C8orf80 antibody (AA 1-228)

1 Image

Overview

Quantity:	100 µL
Target:	C8orf80 (NUGGC)
Binding Specificity:	AA 1-228
Reactivity:	Human
Host:	Rabbit
Clonality:	Polyclonal
Conjugate:	This C8orf80 antibody is un-conjugated
Application:	Western Blotting (WB), ELISA

Product Details

Immunogen:	Recombinant Human Nuclear GTPase SLIP-GC protein (1-228AA)
Isotype:	IgG
Cross-Reactivity:	Human
Purification:	>95%, Protein G purified

Target Details

Target:	C8orf80 (NUGGC)
Alternative Name:	NUGGC (NUGGC Products)
Background:	Background: Nuclear GTPase found in germinal center B-cells, where it may inhibit function of the activation-induced cytidine deaminase AICDA (PubMed:19734146). Reduces somatic

Target Details

hypermutation in B-cells which may enhance genome stability (By similarity).

Aliases: NUGGC antibody, C8orf80 antibody, HMFN0672 antibody, Nuclear GTPase SLIP-GC antibody, EC 3.6.1.- antibody, Speckled-like pattern in the germinal center antibody

UniProt: [Q68CJ6](#)

Application Details

Application Notes: Recommended dilution: WB:1:1000-1:5000,

Restrictions: For Research Use only

Handling

Format: Liquid

Buffer: Preservative: 0.03 % Proclin 300
Constituents: 50 % Glycerol, 0.01M PBS, pH 7.4

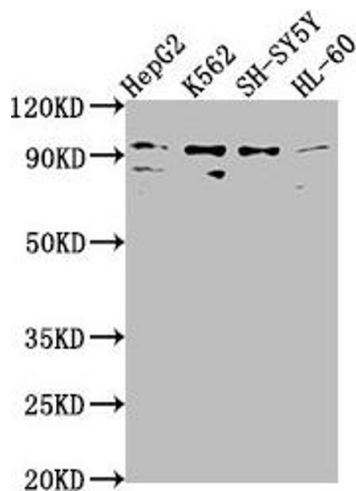
Preservative: ProClin

Precaution of Use: This product contains ProClin: a POISONOUS AND HAZARDOUS SUBSTANCE which should be handled by trained staff only.

Storage: -20 °C,-80 °C

Storage Comment: Upon receipt, store at -20°C or -80°C. Avoid repeated freeze.

Images



Western Blotting

Image 1. Western Blot Positive WB detected in: HepG2 whole cell lysate, K562 whole cell lysate, SH-SY5Y whole cell lysate, HL-60 whole cell lysate All lanes: NUGGC antibody at 1:2000 Secondary Goat polyclonal to rabbit IgG at 1/50000 dilution Predicted band size: 92 kDa Observed band size: 92 kDa