

Datasheet for ABIN7161805
anti-PPP1R8 antibody (AA 1-209)



[Go to Product page](#)

4 Images

Overview

| | |
|----------------------|---|
| Quantity: | 100 µL |
| Target: | PPP1R8 |
| Binding Specificity: | AA 1-209 |
| Reactivity: | Human |
| Host: | Rabbit |
| Clonality: | Polyclonal |
| Conjugate: | This PPP1R8 antibody is un-conjugated |
| Application: | Western Blotting (WB), ELISA, Immunohistochemistry (IHC), Immunofluorescence (IF) |

Product Details

| | |
|-------------------|--|
| Immunogen: | Recombinant Human Nuclear inhibitor of protein phosphatase 1 protein (1-209AA) |
| Isotype: | IgG |
| Cross-Reactivity: | Human |
| Purification: | Antigen Affinity Purified |

Target Details

| | |
|-------------------|--|
| Target: | PPP1R8 |
| Alternative Name: | PPP1R8 (PPP1R8 Products) |
| Background: | Background: Inhibitor subunit of the major nuclear protein phosphatase-1 (PP-1). It has RNA-binding activity but does not cleave RNA and may target PP-1 to RNA-associated substrates. |

Target Details

May also be involved in pre-mRNA splicing. Binds DNA and might act as a transcriptional repressor. Seems to be required for cell proliferation.

Aliases: Activator of RNA decay antibody, ARD 1 antibody, ARD-1 antibody, ARD1 antibody, Homolog of E.coli RNase E antibody, NIPP 1 antibody, NIPP-1 antibody, NIPP1 antibody, Nuclear inhibitor of protein phosphatase 1 antibody, nuclear inhibitor of protein phosphatase-1 alpha antibody, Nuclear subunit of PP1 antibody, PP1R8_HUMAN antibody, PPP1R8 antibody, PRO2047 antibody, Protein phosphatase 1 regulatory inhibitor subunit 8 antibody, Protein phosphatase 1 regulatory subunit 8 antibody, RNase E antibody, RNase E, E. coli, homolog of antibody

UniProt: [Q12972](#)

Application Details

Application Notes: Recommended dilution: WB:1:500-1:2000, IHC:1:20-1:200, IF:1:50-1:200,

Restrictions: For Research Use only

Handling

Format: Liquid

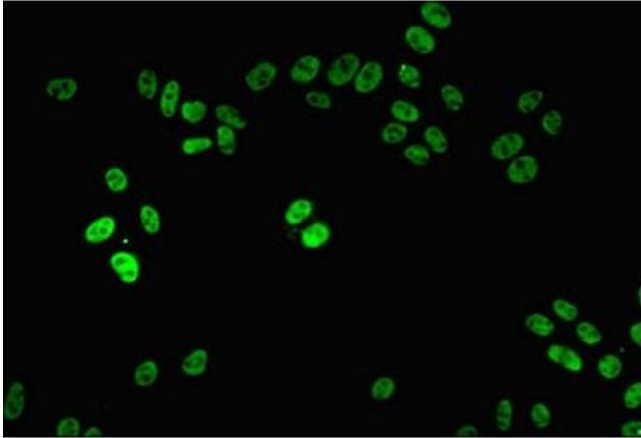
Buffer: PBS with 0.02 % sodium azide, 50 % glycerol, pH 7.3.

Preservative: Sodium azide

Precaution of Use: This product contains Sodium azide: a POISONOUS AND HAZARDOUS SUBSTANCE which should be handled by trained staff only.

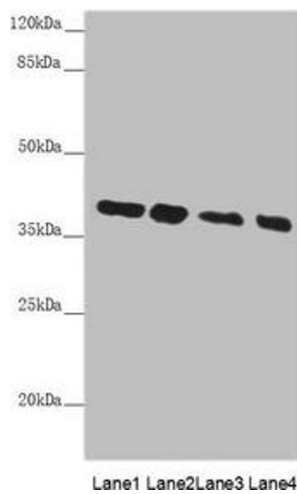
Storage: -20 °C,-80 °C

Storage Comment: Upon receipt, store at -20°C or -80°C. Avoid repeated freeze.



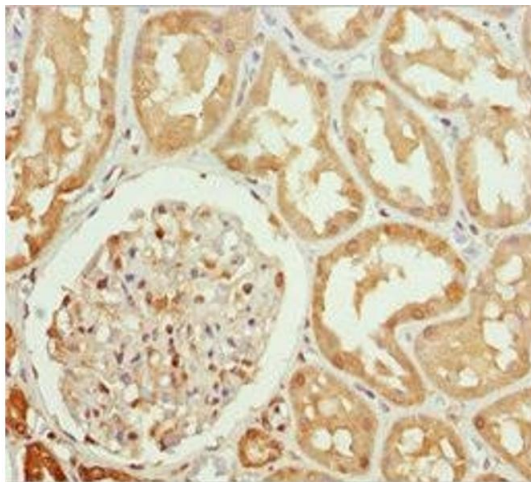
Immunofluorescence

Image 1. Immunofluorescent analysis of HepG2 cells using ABIN7161805 at dilution of 1:100 and Alexa Fluor 488-conjugated AffiniPure Goat Anti-Rabbit IgG(H+L)



Western Blotting

Image 2. Western blot All lanes: PPP1R8 antibody at 4.73 μ g/mL Lane 1: PC-3 whole cell lysate Lane 2: HL60 whole cell lysate Lane 3: HepG2 whole cell lysate Lane 4: Hela whole cell lysate Secondary Goat polyclonal to rabbit IgG at 1/10000 dilution Predicted band size: 39, 23, 14 kDa Observed band size: 39 kDa



Immunohistochemistry

Image 3. Immunohistochemistry of paraffin-embedded human kidney tissue using ABIN7161805 at dilution of 1:100

Please check the [product details page](#) for more images. Overall 4 images are available for ABIN7161805.