

Datasheet for ABIN7161811
anti-C1D antibody (AA 1-135)[Go to Product page](#)

4 Images

Overview

Quantity:	100 µg
Target:	C1D
Binding Specificity:	AA 1-135
Reactivity:	Human
Host:	Rabbit
Clonality:	Polyclonal
Conjugate:	This C1D antibody is un-conjugated
Application:	ELISA, Western Blotting (WB), Immunohistochemistry (IHC), Immunofluorescence (IF)

Product Details

Immunogen:	Recombinant Human Nuclear nucleic acid-binding protein C1D protein (1-135AA)
Isotype:	IgG
Cross-Reactivity:	Human
Purification:	>95%, Protein G purified

Target Details

Target:	C1D
Alternative Name:	C1D (C1D Products)
Background:	Background: Plays a role in the recruitment of the RNA exosome complex to pre-rRNA to mediate the 3\'\'\'-5\'\'\' end processing of the 5.8S rRNA, this function may include MPHOSPH6.

Target Details

Can activate PRKDC not only in the presence of linear DNA but also in the presence of supercoiled DNA. Can induce apoptosis in a p53/TP53 dependent manner. May regulate the TRAX/TSN complex formation. Potentiates transcriptional repression by NR1D1 and THRB. Aliases: 1110036E10Rik antibody, A1875855 antibody, C1D antibody, C1D DNA binding protein antibody, C1D_HUMAN antibody, hC1D antibody, LRP1 antibody, MGC12261 antibody, MGC14659 antibody, MGC188504 antibody, Nuclear DNA binding protein antibody, Nuclear nucleic acid binding protein C1D antibody, Nuclear nucleic acid-binding protein C1D antibody, rCG23324 antibody, RGD1560600 antibody, Small unique nuclear receptor corepressor antibody, SUNCOR antibody

UniProt: [Q13901](#)

Application Details

Application Notes: Recommended dilution: WB:1:2000-1:10000, IHC:1:50-1:500, IF:1:500-1:1000,

Restrictions: For Research Use only

Handling

Format: Liquid

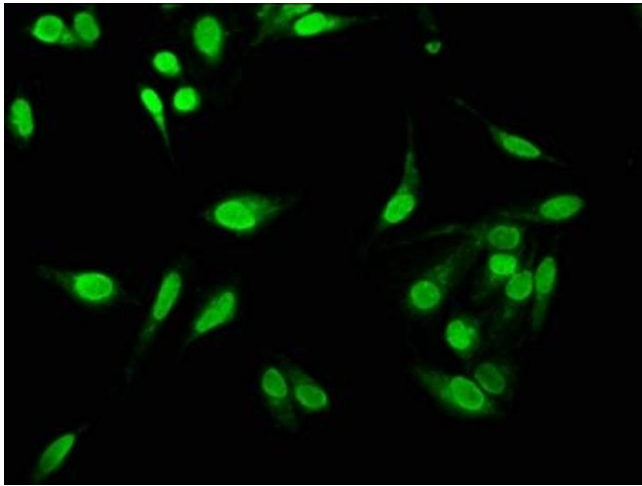
Buffer: Preservative: 0.03 % Proclin 300
Constituents: 50 % Glycerol, 0.01M PBS, PH 7.4

Preservative: ProClin

Precaution of Use: This product contains ProClin: a POISONOUS AND HAZARDOUS SUBSTANCE which should be handled by trained staff only.

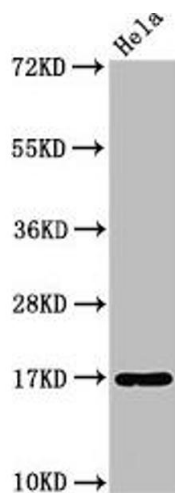
Storage: -20 °C, -80 °C

Storage Comment: Upon receipt, store at -20°C or -80°C. Avoid repeated freeze.



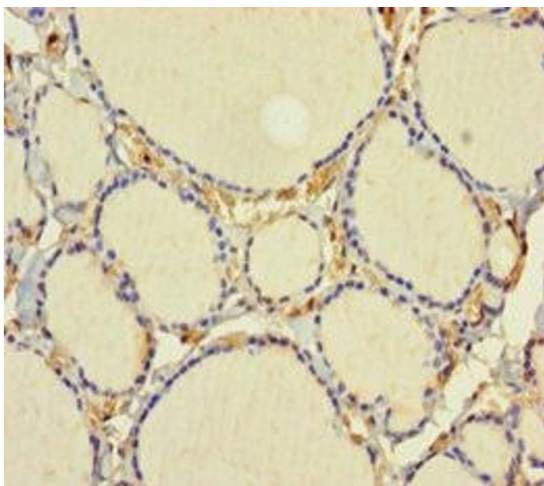
Immunofluorescence

Image 1. Immunofluorescence staining of HeLa cells with ABIN7161811 at 1:533, counter-stained with DAPI. The cells were fixed in 4% formaldehyde, permeabilized using 0.2% Triton X-100 and blocked in 10% normal Goat Serum. The cells were then incubated with the antibody overnight at 4°C. The secondary antibody was Alexa Fluor 488-conjugated AffiniPure Goat Anti-Rabbit IgG(H+L).



Western Blotting

Image 2. Western Blot Positive WB detected in: HeLa whole cell lysate All lanes: C1D antibody at 3.2 µg/mL Secondary Goat polyclonal to rabbit IgG at 1/50000 dilution Predicted band size: 17 kDa Observed band size: 17 kDa



Immunohistochemistry

Image 3. Immunohistochemistry of paraffin-embedded human thyroid tissue using ABIN7161811 at dilution of 1:100

Please check the [product details page](#) for more images. Overall 4 images are available for ABIN7161811.