

Datasheet for ABIN7161950
anti-NVL antibody (AA 340-520)[Go to Product page](#)

2 Images

Overview

Quantity:	100 µL
Target:	NVL
Binding Specificity:	AA 340-520
Reactivity:	Human
Host:	Rabbit
Clonality:	Polyclonal
Conjugate:	This NVL antibody is un-conjugated
Application:	Western Blotting (WB), ELISA, Immunohistochemistry (IHC)

Product Details

Immunogen:	Recombinant Human Nuclear valosin-containing protein-like protein(340-520AA)
Isotype:	IgG
Cross-Reactivity:	Human, Mouse
Purification:	Antigen Affinity Purified

Target Details

Target:	NVL
Alternative Name:	NVL (NVL Products)
Background:	Background: This gene encodes a member of the AAA (ATPases associated with diverse cellular activities) superfamily. Multiple transcript variants encoding different isoforms have

Target Details

been found for this gene. Two encoded proteins, described as major and minor isoforms, have been localized to distinct regions of the nucleus. The largest encoded protein (major isoform) has been localized to the nucleolus and shown to participate in ribosome biosynthesis (PMID: 15469983, 16782053), while the minor isoform has been localized to the nucleoplasm.

Aliases: Nuclear valosin containing protein like antibody, Nuclear valosin-containing protein-like antibody, Nuclear VCP like antibody, Nuclear VCP-like protein antibody, Nvl antibody, NVL_HUMAN antibody, NVLp antibody, OTTHUMP00000035641 antibody, OTTHUMP00000216593 antibody, OTTHUMP00000216594 antibody, OTTHUMP00000216599 antibody, OTTHUMP00000216600 antibody

UniProt: [O15381](#)

Application Details

Application Notes: Recommended dilution: WB:1:200-1:1000, IHC:1:20-1:200,

Restrictions: For Research Use only

Handling

Format: Liquid

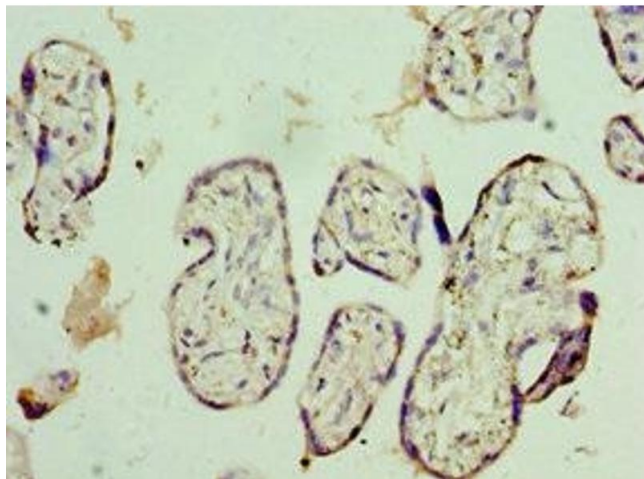
Buffer: PBS with 0.02 % sodium azide, 50 % glycerol, pH 7.3.

Preservative: Sodium azide

Precaution of Use: This product contains Sodium azide: a POISONOUS AND HAZARDOUS SUBSTANCE which should be handled by trained staff only.

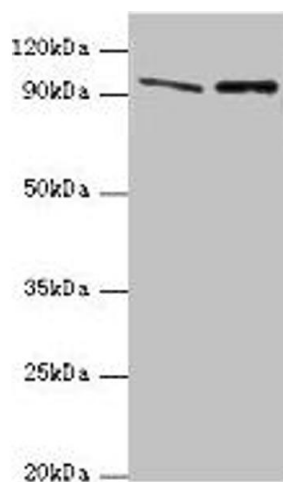
Storage: -20 °C, -80 °C

Storage Comment: Upon receipt, store at -20°C or -80°C. Avoid repeated freeze.



Immunohistochemistry

Image 1. Immunohistochemistry of paraffin-embedded human placenta tissue using ABIN7161950 at dilution of 1:100



Western Blotting

Image 2. Western blot All lanes: NVL antibody at 10 µg/mL
Lane 1: Mouse thymus tissue Lane 2: Hela whole cell lysate
Secondary Goat polyclonal to rabbit IgG at 1/10000 dilution
Predicted band size: 96, 83, 73, 74, 86 kDa Observed band size: 96 kDa