

Datasheet for ABIN7161952
anti-ZC3HC1 antibody (AA 1-260)

3 Images

[Go to Product page](#)

Overview

Quantity:	100 µL
Target:	ZC3HC1
Binding Specificity:	AA 1-260
Reactivity:	Human
Host:	Rabbit
Clonality:	Polyclonal
Conjugate:	This ZC3HC1 antibody is un-conjugated
Application:	Western Blotting (WB), ELISA, Immunohistochemistry (IHC)

Product Details

Immunogen:	Recombinant Human Nuclear-interacting partner of ALK protein (1-260AA)
Isotype:	IgG
Cross-Reactivity:	Human
Purification:	Antigen Affinity Purified

Target Details

Target:	ZC3HC1
Alternative Name:	ZC3HC1 (ZC3HC1 Products)
Background:	Background: Essential component of an SCF-type E3 ligase complex, SCF(NIPA), a complex that controls mitotic entry by mediating ubiquitination and subsequent degradation of cyclin B1

Target Details

(CCNB1). Its cell-cycle-dependent phosphorylation regulates the assembly of the SCF(NIPA) complex, restricting CCNB1 ubiquitination activity to interphase. Its inactivation results in nuclear accumulation of CCNB1 in interphase and premature mitotic entry. May have an antiapoptotic role in NPM-ALK-mediated signaling events.

Aliases: hNIPA antibody, NIPA_HUMAN antibody, Nuclear interacting partner of ALK antibody, Nuclear interacting partner of anaplastic lymphoma kinase antibody, Nuclear-interacting partner of ALK antibody, Nuclear-interacting partner of anaplastic lymphoma kinase antibody, zc3hc1 antibody, Zinc finger C3HC type containing 1 antibody, Zinc finger C3HC-type protein 1 antibody

UniProt: [Q86WB0](#)

Application Details

Application Notes: Recommended dilution: WB:1:1000-1:5000, IHC:1:20-1:200,

Restrictions: For Research Use only

Handling

Format: Liquid

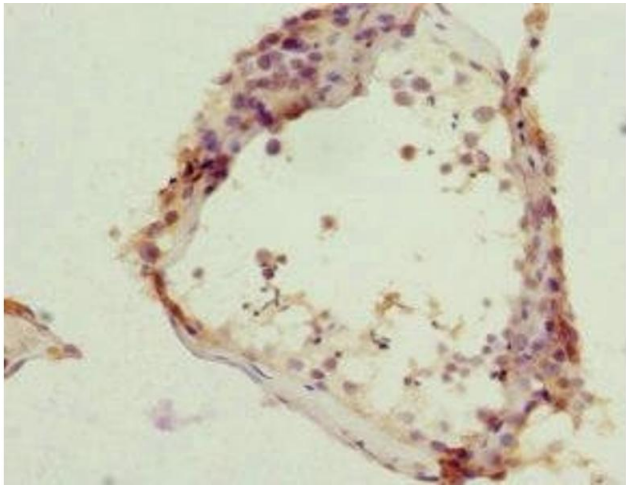
Buffer: PBS with 0.02 % sodium azide, 50 % glycerol, pH 7.3.

Preservative: Sodium azide

Precaution of Use: This product contains Sodium azide: a POISONOUS AND HAZARDOUS SUBSTANCE which should be handled by trained staff only.

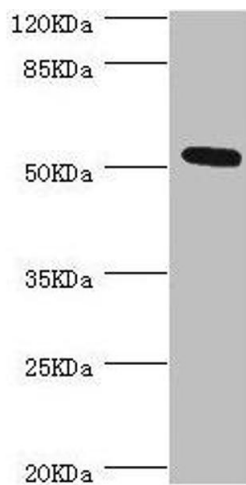
Storage: -20 °C, -80 °C

Storage Comment: Upon receipt, store at -20°C or -80°C. Avoid repeated freeze.



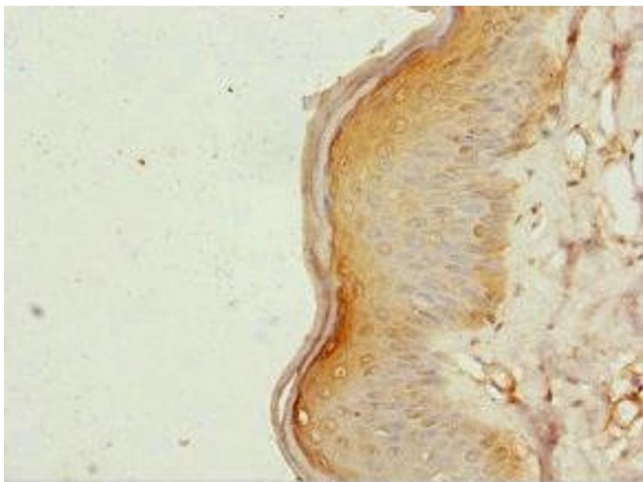
Immunohistochemistry

Image 1. Immunohistochemistry of paraffin-embedded human testis tissue using ABIN7161952 at dilution of 1:100



Western Blotting

Image 2. Western blot All lanes: ZC3HC1 antibody at 0.98 μ g/mL + Hela whole cell lysate Secondary Goat polyclonal to rabbit IgG at 1/10000 dilution Predicted band size: 56, 54, 48 kDa Observed band size: 54 kDa



Immunohistochemistry

Image 3. Immunohistochemistry of paraffin-embedded human skin tissue using ABIN7161952 at dilution of 1:100