

Datasheet for ABIN7161992  
**anti-Nucleolin antibody (AA 411-710)**



[Go to Product page](#)

2 Images

## Overview

Quantity:	100 µL
Target:	Nucleolin (NCL)
Binding Specificity:	AA 411-710
Reactivity:	Human
Host:	Rabbit
Clonality:	Polyclonal
Conjugate:	This Nucleolin antibody is un-conjugated
Application:	Western Blotting (WB), Immunohistochemistry (IHC), ELISA

## Product Details

Immunogen:	Recombinant Human Nucleolin protein (411-710AA)
Isotype:	IgG
Cross-Reactivity:	Human
Purification:	Antigen Affinity Purified

## Target Details

Target:	Nucleolin (NCL)
Alternative Name:	NCL ( <a href="#">NCL Products</a> )
Background:	Background: Nucleolin is the major nucleolar protein of growing eukaryotic cells. It is found associated with intranucleolar chromatin and pre-ribosomal particles. It induces chromatin

## Target Details

---

decondensation by binding to histone H1. It is thought to play a role in pre-rRNA transcription and ribosome assembly. May play a role in the process of transcriptional elongation. Binds RNA oligonucleotides with 5\\\'-UUAGGG-3\\\' repeats more tightly than the telomeric single-stranded DNA 5\\\'-TTAGGG-3\\\' repeats.

Aliases: C23 antibody, FLJ45706 antibody, MS1116 antibody, NCL antibody, Nucl antibody, NUCL\_HUMAN antibody, Nucleolin antibody, Protein C23 antibody

---

UniProt: [P19338](#)

---

Pathways: [Ribonucleoprotein Complex Subunit Organization](#)

## Application Details

---

Application Notes: Recommended dilution: WB:1:200-1:1000, IHC:1:20-1:200,

---

Restrictions: For Research Use only

## Handling

---

Format: Liquid

---

Buffer: PBS with 0.02 % sodium azide, 50 % glycerol, pH 7.3.

---

Preservative: Sodium azide

---

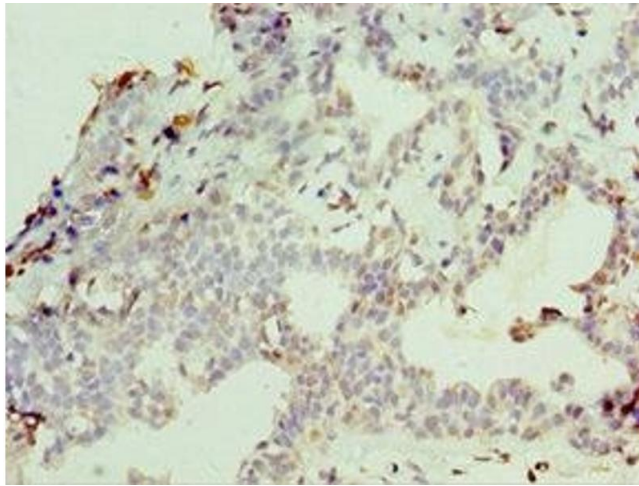
Precaution of Use: This product contains Sodium azide: a POISONOUS AND HAZARDOUS SUBSTANCE which should be handled by trained staff only.

---

Storage: -20 °C,-80 °C

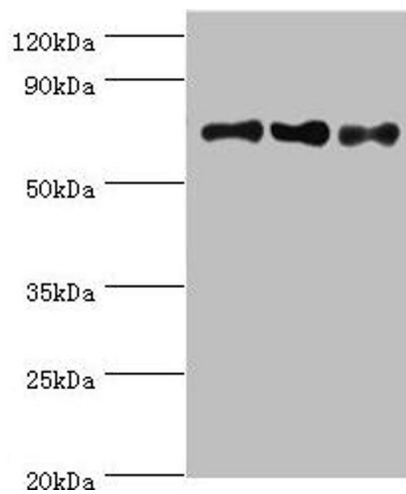
---

Storage Comment: Upon receipt, store at -20°C or -80°C. Avoid repeated freeze.



### Immunohistochemistry

**Image 1.** Immunohistochemistry of paraffin-embedded human breast cancer using ABIN7161992 at dilution of 1:100



### Western Blotting

**Image 2.** Western blot All lanes: NCL antibody at 8  $\mu$ g/mL  
Lane 1: Jurkat whole cell lysate Lane 2: Hela whole cell lysate Lane 3: 293T whole cell lysate Secondary Goat polyclonal to rabbit IgG at 1/10000 dilution Predicted band size: 77 kDa Observed band size: 77 kDa