



Datasheet for ABIN7162035
anti-NXNL2 antibody (AA 1-135)



[Go to Product page](#)

2 Images

Overview

Quantity:	100 µg
Target:	NXNL2
Binding Specificity:	AA 1-135
Reactivity:	Human
Host:	Rabbit
Clonality:	Polyclonal
Conjugate:	This NXNL2 antibody is un-conjugated
Application:	ELISA, Immunohistochemistry (IHC)

Product Details

Immunogen:	Recombinant Human Nucleoredoxin-like protein 2 protein (1-135AA)
Isotype:	IgG
Cross-Reactivity:	Human
Purification:	>95%, Protein G purified

Target Details

Target:	NXNL2
Alternative Name:	NXNL2 (NXNL2 Products)
Background:	Background: May be involved in the maintenance of both the function and the viability of sensory neurons, including photoreceptors and olfactory neurons.

Target Details

Aliases: C9orf121 antibody, Chromosome 9 open reading frame 121 antibody, Nucleoredoxin like 2 antibody, Nucleoredoxin-like protein 2 antibody, Nxn12 antibody, NXNL2_HUMAN antibody, RDCVF2 antibody

UniProt: [Q5VZ03](#)

Application Details

Application Notes: Recommended dilution: IHC:1:20-1:200,

Restrictions: For Research Use only

Handling

Format: Liquid

Buffer: Preservative: 0.03 % Proclin 300
Constituents: 50 % Glycerol, 0.01M PBS, PH 7.4

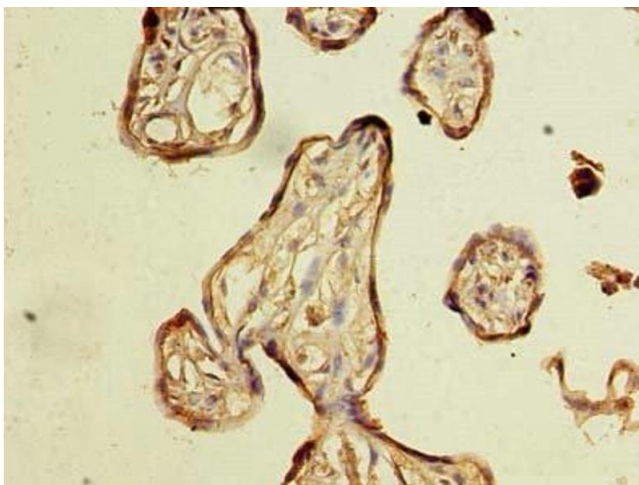
Preservative: ProClin

Precaution of Use: This product contains ProClin: a POISONOUS AND HAZARDOUS SUBSTANCE which should be handled by trained staff only.

Storage: -20 °C,-80 °C

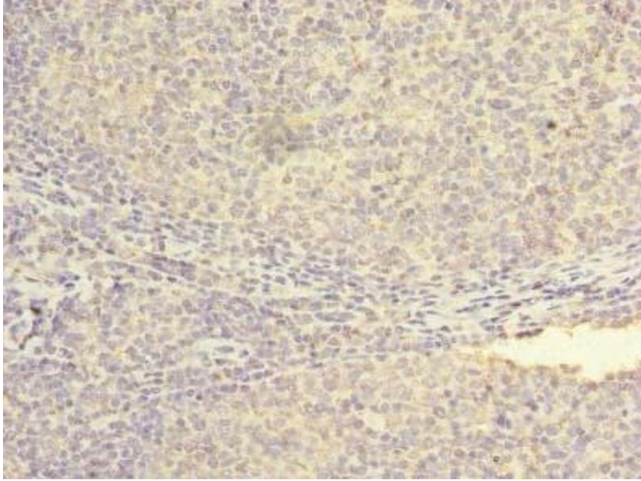
Storage Comment: Upon receipt, store at -20°C or -80°C. Avoid repeated freeze.

Images



Immunohistochemistry

Image 1. Immunohistochemistry of paraffin-embedded human placenta tissue using ABIN7162035 at dilution of 1:100



Immunohistochemistry

Image 2. Immunohistochemistry of paraffin-embedded human tonsil tissue using ABIN7162035 at dilution of 1:100