

Datasheet for ABIN7162048
anti-NME1 antibody (AA 2-152)[Go to Product page](#)

2 Images

Overview

Quantity:	100 µg
Target:	NME1
Binding Specificity:	AA 2-152
Reactivity:	Human
Host:	Rabbit
Clonality:	Polyclonal
Conjugate:	This NME1 antibody is un-conjugated
Application:	ELISA, Immunohistochemistry (IHC), Immunofluorescence (IF)

Product Details

Immunogen:	Recombinant Human Nucleoside diphosphate kinase A protein (2-152AA)
Isotype:	IgG
Cross-Reactivity:	Human
Purification:	>95%, Protein G purified

Target Details

Target:	NME1
Alternative Name:	NME1 (NME1 Products)
Background:	Background: Major role in the synthesis of nucleoside triphosphates other than ATP. Possesses nucleoside-diphosphate kinase, serine/threonine-specific protein kinase, geranyl and farnesyl

Target Details

pyrophosphate kinase, histidine protein kinase and 3'→5' exonuclease activities. Involved in cell proliferation, differentiation and development, signal transduction, G protein-coupled receptor endocytosis, and gene expression. Required for neural development including neural patterning and cell fate determination.

Aliases: AWD antibody, AWD, drosophila, homolog of antibody, GAAD antibody, Granzyme A activated DNase antibody, Granzyme A-activated DNase antibody, GZMA activated DNase antibody, Metastasis inhibition factor NM23 antibody, NB antibody, NBS antibody, NDK A antibody, NDKA antibody, NDKA_HUMAN antibody, NDP kinase A antibody, NDPK-A antibody, NDPKA antibody, NM23 antibody, NM23 long variant, included antibody, nm23-H1 antibody, NM23-M1 antibody, NM23H1B, included antibody, NME/NM23 nucleoside diphosphate kinase 1 antibody, Nme1 antibody, NME1-NME2 spliced read-through transcript, included antibody, Non-metastatic cells 1, protein (NM23A) expressed in antibody, Nonmetastatic cells 1, protein expressed in antibody, Nonmetastatic protein 23 antibody, Nonmetastatic protein 23, homolog 1 antibody, Nucleoside diphosphate kinase A antibody, Tumor metastatic process-associated protein antibody

UniProt: [P15531](#)

Pathways: [Apoptosis](#), [Nucleotide Phosphorylation](#), [Carbohydrate Homeostasis](#), [Ribonucleoside Biosynthetic Process](#)

Application Details

Application Notes: Recommended dilution: IHC:1:20-1:200, IF:1:50-1:500,

Restrictions: For Research Use only

Handling

Format: Liquid

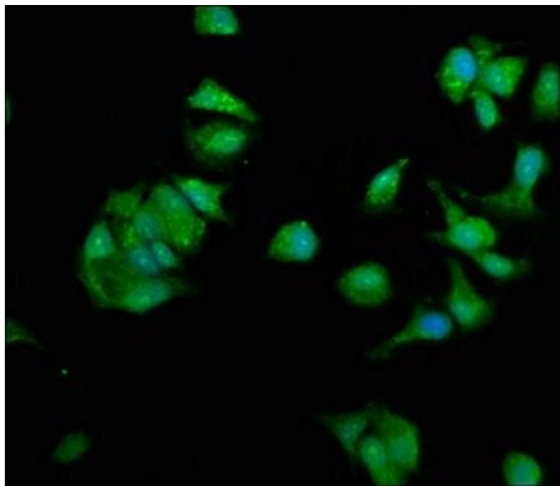
Buffer: Preservative: 0.03 % Proclin 300
Constituents: 50 % Glycerol, 0.01M PBS, PH 7.4

Preservative: ProClin

Precaution of Use: This product contains ProClin: a POISONOUS AND HAZARDOUS SUBSTANCE which should be handled by trained staff only.

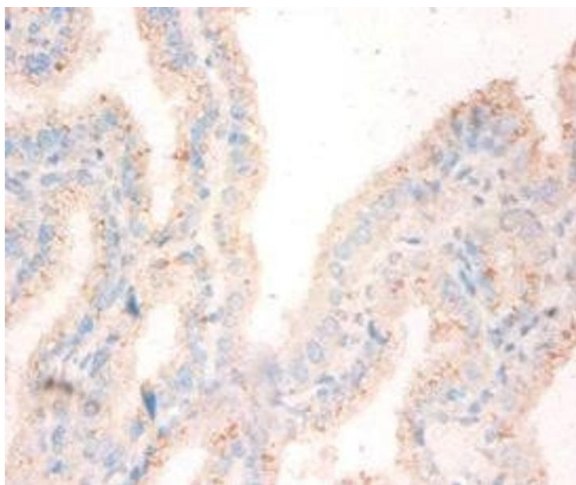
Storage: -20 °C,-80 °C

Storage Comment: Upon receipt, store at -20°C or -80°C. Avoid repeated freeze.



Immunofluorescence

Image 1. Immunofluorescence staining of MCF-7 cells with ABIN7162048 at 1:330, counter-stained with DAPI. The cells were fixed in 4% formaldehyde, permeabilized using 0.2% Triton X-100 and blocked in 10% normal Goat Serum. The cells were then incubated with the antibody overnight at 4°C. The secondary antibody was Alexa Fluor 488-conjugated AffiniPure Goat Anti-Rabbit IgG(H+L).



Immunohistochemistry

Image 2. Immunohistochemistry of paraffin-embedded human bladder cancer using ABIN7162048 at dilution of 1:50