

Datasheet for ABIN7162061
anti-NAP1L5 antibody (AA 1-67)[Go to Product page](#)

1 Image

Overview

Quantity:	100 µg
Target:	NAP1L5
Binding Specificity:	AA 1-67
Reactivity:	Human
Host:	Rabbit
Clonality:	Polyclonal
Conjugate:	This NAP1L5 antibody is un-conjugated
Application:	ELISA, Immunohistochemistry (IHC)

Product Details

Immunogen:	Recombinant Human Nucleosome assembly protein 1-like 5 protein (1-67AA)
Isotype:	IgG
Cross-Reactivity:	Human
Purification:	>95%, Protein G purified

Target Details

Target:	NAP1L5
Alternative Name:	NAP1L5 (NAP1L5 Products)
Background:	1110020M21Rik antibody, down regulated in liver malignancy antibody, DRLM antibody, NAP1L5 antibody, NP1L5_HUMAN antibody, Nucleosome assembly protein 1-like 5 antibody

Target Details

UniProt: [Q96NT1](#)

Application Details

Application Notes: Recommended dilution: IHC:1:500-1:1000,

Restrictions: For Research Use only

Handling

Format: Liquid

Buffer: Preservative: 0.03 % Proclin 300
Constituents: 50 % Glycerol, 0.01M PBS, pH 7.4

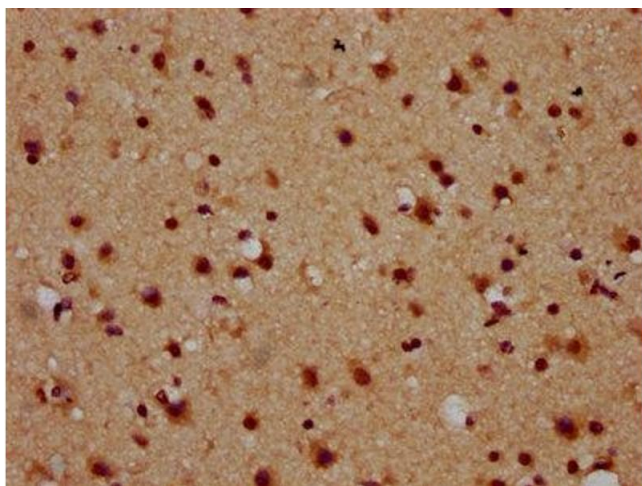
Preservative: ProClin

Precaution of Use: This product contains ProClin: a POISONOUS AND HAZARDOUS SUBSTANCE which should be handled by trained staff only.

Storage: -20 °C,-80 °C

Storage Comment: Upon receipt, store at -20°C or -80°C. Avoid repeated freeze.

Images



Immunohistochemistry

Image 1. IHC image of ABIN7162061 diluted at 1:600 and staining in paraffin-embedded human brain tissue performed on a Leica Bond™ system. After dewaxing and hydration, antigen retrieval was mediated by high pressure in a citrate buffer (pH 6.0). Section was blocked with 10% normal goat serum 30min at RT. Then primary antibody (1% BSA) was incubated at 4°C overnight. The primary is detected by a biotinylated secondary antibody and visualized using an HRP conjugated SP system.