



[Go to Product page](#)

Datasheet for ABIN7162111
anti-OLA1 antibody (AA 1-396)

4 Images

Overview

Quantity:	100 µg
Target:	OLA1
Binding Specificity:	AA 1-396
Reactivity:	Human
Host:	Rabbit
Clonality:	Polyclonal
Conjugate:	This OLA1 antibody is un-conjugated
Application:	Western Blotting (WB), ELISA, Immunohistochemistry (IHC), Immunofluorescence (IF)

Product Details

Immunogen:	Recombinant Human Obg-like ATPase 1 protein (1-396AA)
Isotype:	IgG
Cross-Reactivity:	Human, Mouse
Purification:	>95%, Protein G purified

Target Details

Target:	OLA1
Alternative Name:	OLA1 (OLA1 Products)
Background:	Background: Hydrolyzes ATP, and can also hydrolyze GTP with lower efficiency. Has lower affinity for GTP.

Target Details

Aliases: DKFZp313H1942 antibody, DNA damage-regulated overexpressed in cancer 45 protein antibody, DOC45 antibody, EC 3.6.3 antibody, GBP45 antibody, GTP-binding protein 9 (putative) antibody, GTP-binding protein 9 antibody, GTP-binding protein PTD004 antibody, homologous yeast-44.2 protein antibody, Obg like ATPase 1 antibody, Obg-like ATPase 1 antibody, OLA1 antibody, OLA1_HUMAN antibody, PTD004 antibody

UniProt: [Q9NTK5](#)

Application Details

Application Notes: Recommended dilution: WB:1:500-1:5000, IHC:1:20-1:200, IF:1:50-1:200,

Restrictions: For Research Use only

Handling

Format: Liquid

Buffer: Preservative: 0.03 % Proclin 300
Constituents: 50 % Glycerol, 0.01M PBS, PH 7.4

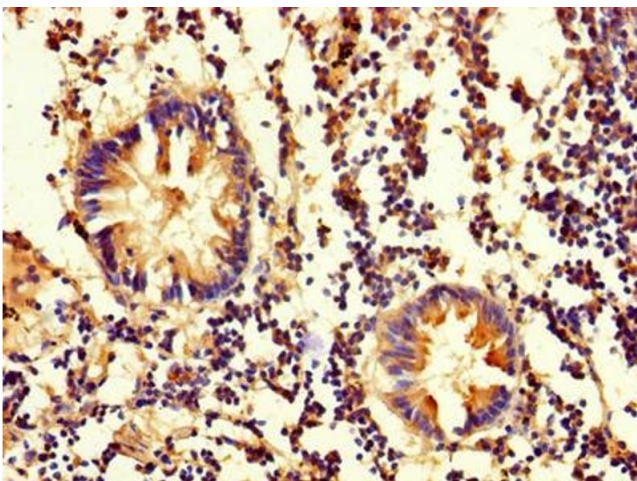
Preservative: ProClin

Precaution of Use: This product contains ProClin: a POISONOUS AND HAZARDOUS SUBSTANCE which should be handled by trained staff only.

Storage: -20 °C,-80 °C

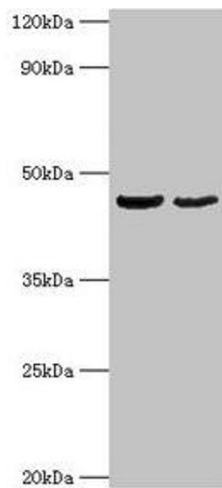
Storage Comment: Upon receipt, store at -20°C or -80°C. Avoid repeated freeze.

Images



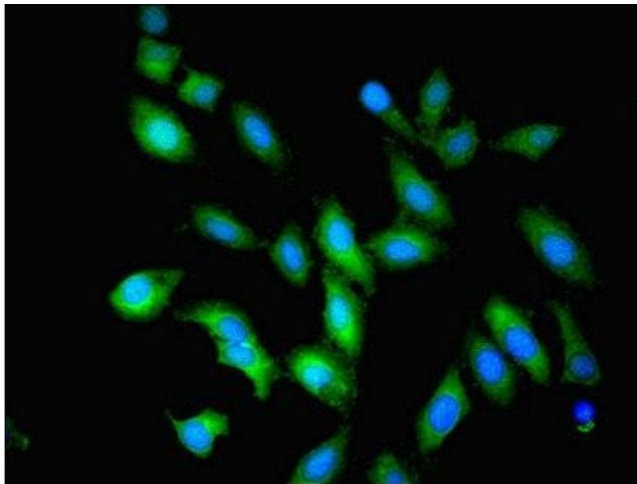
Immunohistochemistry

Image 1. Immunohistochemistry of paraffin-embedded human appendix tissue using ABIN7162111 at dilution of 1:100



Western Blotting

Image 2. Western blot All lanes: OLA1 antibody at 2 µg/mL
Lane 1: HepG2 whole cell lysate Lane 2: Mouse stomach tissue
Secondary Goat polyclonal to rabbit IgG at 1/10000 dilution
Predicted band size: 45, 28, 32 kDa Observed band size: 45 kDa



Immunofluorescence

Image 3. Immunofluorescent analysis of HeLa cells using ABIN7162111 at dilution of 1:100 and Alexa Fluor 488-conjugated AffiniPure Goat Anti-Rabbit IgG(H+L)

Please check the [product details page](#) for more images. Overall 4 images are available for ABIN7162111.