



[Go to Product page](#)

Datasheet for ABIN7162123
anti-Occludin antibody (AA 285-430)

3 Images

Overview

Quantity:	100 µg
Target:	Occludin (OCLN)
Binding Specificity:	AA 285-430
Reactivity:	Human
Host:	Rabbit
Clonality:	Polyclonal
Conjugate:	This Occludin antibody is un-conjugated
Application:	Western Blotting (WB), ELISA, Immunohistochemistry (IHC), Immunofluorescence (IF)

Product Details

Immunogen:	Recombinant Human Occludin protein (285-430AA)
Isotype:	IgG
Cross-Reactivity:	Human
Purification:	>95%, Protein G purified

Target Details

Target:	Occludin (OCLN)
Alternative Name:	OCLN (OCLN Products)
Background:	Background: May play a role in the formation and regulation of the tight junction (TJ) paracellular permeability barrier. It is able to induce adhesion when expressed in cells lacking

Target Details

tight junctions.

Aliases: BLCPMG antibody, FLJ08163 antibody, FLJ18079 antibody, FLJ77961 antibody, FLJ94056 antibody, MGC34277 antibody, Occludin antibody, Ocln antibody, OCLN_HUMAN antibody, Phosphatase 1 regulatory subunit 115 antibody, PPP1R115 antibody, PTORCH1 antibody, Tight junction protein occludin antibody

UniProt: [Q16625](#)

Pathways: [Cell-Cell Junction Organization](#), [Hepatitis C](#)

Application Details

Application Notes: Recommended dilution: WB:1:500-1:5000, IHC:1:200-1:500, IF:1:50-1:200,

Restrictions: For Research Use only

Handling

Format: Liquid

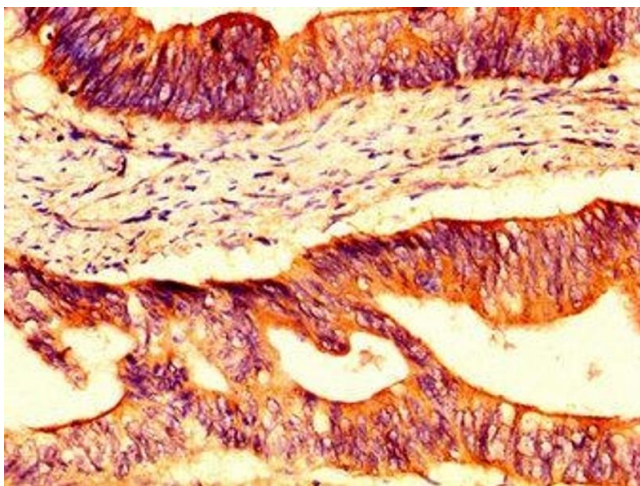
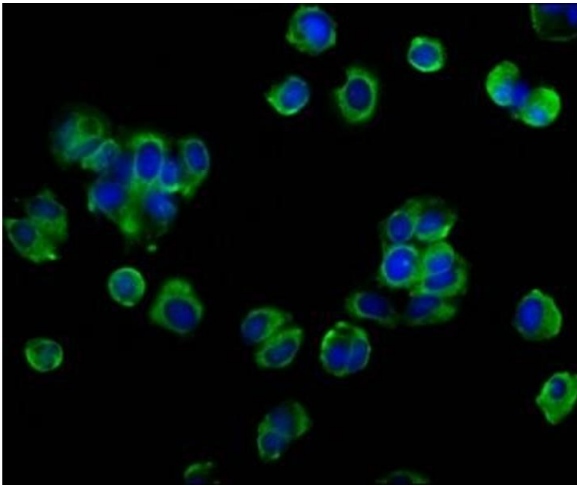
Buffer: Preservative: 0.03 % Proclin 300
Constituents: 50 % Glycerol, 0.01M PBS, pH 7.4

Preservative: ProClin

Precaution of Use: This product contains ProClin: a POISONOUS AND HAZARDOUS SUBSTANCE which should be handled by trained staff only.

Storage: -20 °C,-80 °C

Storage Comment: Upon receipt, store at -20°C or -80°C. Avoid repeated freeze.



Immunofluorescence

Image 1. Immunofluorescence staining of MCF-7 cells with ABIN7162123 at 1:133, counter-stained with DAPI. The cells were fixed in 4 % formaldehyde, permeabilized using 0.2 % Triton X-100 and blocked in 10 % normal Goat Serum. The cells were then incubated with the antibody overnight at 4 °C. The secondary antibody was Alexa Fluor 488-conjugated AffiniPure Goat Anti-Rabbit IgG(H+L).

Western Blotting

Image 2. Western Blot Positive WB detected in: MCF-7 whole cell lysate All lanes: OCLN antibody at 3.2 µg/mL Secondary Goat polyclonal to rabbit IgG at 1/50000 dilution Predicted band size: 60, 53, 55, 32, 24, 9 kDa Observed band size: 60 kDa

Immunohistochemistry

Image 3. IHC image of ABIN7162123 diluted at 1:400 and staining in paraffin-embedded human colon cancer performed on a Leica Bond™ system. After dewaxing and hydration, antigen retrieval was mediated by high pressure in a citrate buffer (pH 6.0). Section was blocked with 10 % normal goat serum 30 min at RT. Then primary antibody (1 % BSA) was incubated at 4 °C overnight. The primary is detected by a biotinylated secondary antibody and visualized using an HRP conjugated SP system.