

Datasheet for ABIN7162139

**anti-Olfactomedin 4 antibody (AA 224-334)**[Go to Product page](#)**3** Images

## Overview

|                      |  |
|----------------------|--|
| Quantity:            | 100 µg   |
| Target:              | Olfactomedin 4 (OLFM4)                                   |
| Binding Specificity: | AA 224-334   |
| Reactivity:          | Human  |
| Host:                | Rabbit   |
| Clonality:           | Polyclonal   |
| Conjugate:           | This Olfactomedin 4 antibody is un-conjugated            |
| Application:         | Western Blotting (WB), Immunohistochemistry (IHC), ELISA |

## Product Details

|                   |  |
|-------------------|--|
| Immunogen:        | Recombinant Human Olfactomedin-4 protein (224-334AA) |
| Isotype:          | IgG  |
| Cross-Reactivity: | Human, Rat   |
| Purification:     | >95%, Protein G purified                             |

## Target Details

|                   |   |
|-------------------|---|
| Target:           | Olfactomedin 4 (OLFM4)  |
| Alternative Name: | OLFM4 ( <a href="#">OLFM4 Products</a> )  |
| Background:       | Background: May promote proliferation of pancreatic cancer cells by favoring the transition from the S to G2/M phase. In myeloid leukemic cell lines, inhibits cell growth and induces cell |

## Target Details

differentiation and apoptosis. May play a role in the inhibition of EIF4EBP1 phosphorylation/deactivation. Facilitates cell adhesion, most probably through interaction with cell surface lectins and cadherin.

Aliases: Antiapoptotic protein GW112 antibody, bA209J19.1 antibody, G-CSF-stimulated clone 1 protein antibody, GC1 antibody, GW112 antibody, hGC 1 antibody, hGC-1 antibody, hOLfD antibody, KIAA4294 antibody, olfactomedin 4 antibody, Olfactomedin-4 antibody, OlfD antibody, OLFM4 antibody, OLFM4\_HUMAN antibody, OLM4 antibody, UNQ362 antibody

UniProt: [Q6UX06](#)

## Application Details

Application Notes: Recommended dilution: WB:1:500-1:5000, IHC:1:200-1:500,

Restrictions: For Research Use only

## Handling

Format: Liquid

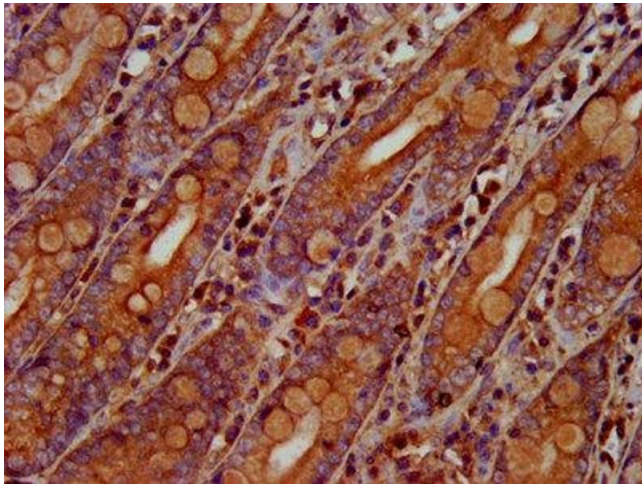
Buffer: Preservative: 0.03 % Proclin 300  
Constituents: 50 % Glycerol, 0.01M PBS, pH 7.4

Preservative: ProClin

Precaution of Use: This product contains ProClin: a POISONOUS AND HAZARDOUS SUBSTANCE which should be handled by trained staff only.

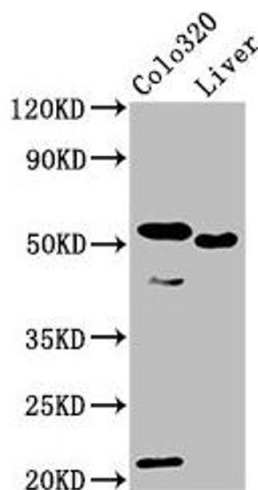
Storage: -20 °C,-80 °C

Storage Comment: Upon receipt, store at -20°C or -80°C. Avoid repeated freeze.



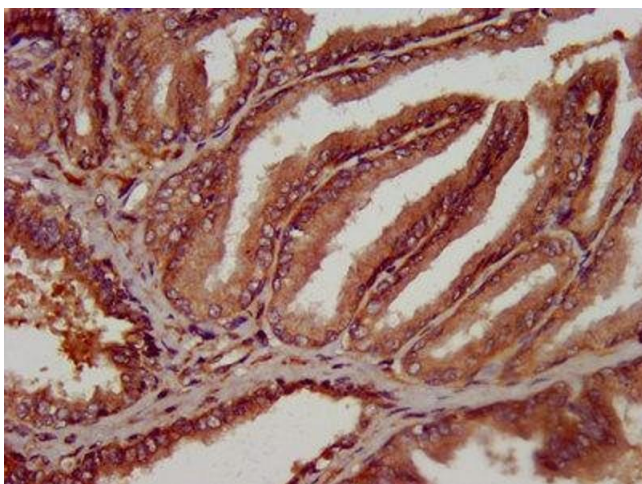
#### Immunohistochemistry

**Image 1.** IHC image of ABIN7162139 diluted at 1:300 and staining in paraffin-embedded human small intestine tissue performed on a Leica Bond™ system. After dewaxing and hydration, antigen retrieval was mediated by high pressure in a citrate buffer (pH 6.0). Section was blocked with 10 % normal goat serum 30 min at RT. Then primary antibody (1 % BSA) was incubated at 4 °C overnight. The primary is detected by a biotinylated secondary antibody and visualized using an HRP conjugated SP system.



#### Western Blotting

**Image 2.** Western Blot Positive WB detected in: Colo320 whole cell lysate, Rat liver tissue All lanes: OLFM4 antibody at 10 µg/mL Secondary Goat polyclonal to rabbit IgG at 1/50000 dilution Predicted band size: 58 kDa Observed band size: 58 kDa



#### Immunohistochemistry

**Image 3.** IHC image of ABIN7162139 diluted at 1:300 and staining in paraffin-embedded human prostate tissue performed on a Leica Bond™ system. After dewaxing and hydration, antigen retrieval was mediated by high pressure in a citrate buffer (pH 6.0). Section was blocked with 10 % normal goat serum 30 min at RT. Then primary antibody (1 % BSA) was incubated at 4 °C overnight. The primary is detected by a biotinylated secondary antibody and visualized using an HRP conjugated SP system.