



[Go to Product page](#)

Datasheet for ABIN7162147

## anti-OLFML2A antibody (AA 1-300)

### 2 Images

#### Overview

Quantity:	100 µg
Target:	OLFML2A
Binding Specificity:	AA 1-300
Reactivity:	Human
Host:	Rabbit
Clonality:	Polyclonal
Conjugate:	This OLFML2A antibody is un-conjugated
Application:	ELISA, Immunohistochemistry (IHC)

#### Product Details

Immunogen:	Recombinant Human Olfactomedin-like protein 2A protein (1-300AA)
Isotype:	IgG
Cross-Reactivity:	Human
Purification:	>95%, Protein G purified

#### Target Details

Target:	OLFML2A
Alternative Name:	OLFML2A ( <a href="#">OLFML2A Products</a> )
Background:	OLFML2A antibody, UNQ9394/PRO34319 antibody, Olfactomedin-like protein 2A antibody, Photomedin-1 antibody

## Target Details

---

UniProt: [Q68BL7](#)

## Application Details

---

Application Notes: Recommended dilution: IHC:1:20-1:200,

Restrictions: For Research Use only

## Handling

---

Format: Liquid

Buffer: Preservative: 0.03 % Proclin 300  
Constituents: 50 % Glycerol, 0.01M PBS, PH 7.4

Preservative: ProClin

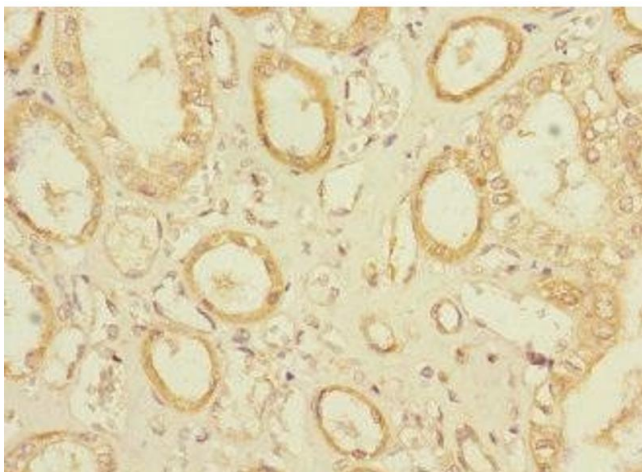
Precaution of Use: This product contains ProClin: a POISONOUS AND HAZARDOUS SUBSTANCE which should be handled by trained staff only.

Storage: -20 °C,-80 °C

Storage Comment: Upon receipt, store at -20°C or -80°C. Avoid repeated freeze.

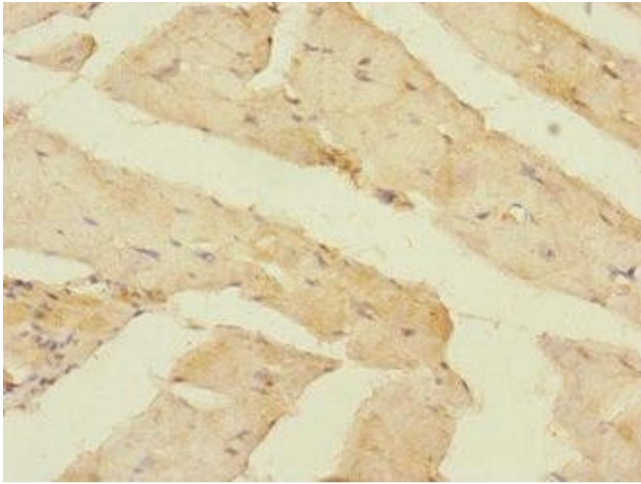
## Images

---



### Immunohistochemistry

**Image 1.** Immunohistochemistry of paraffin-embedded human kidney tissue using ABIN7162147 at dilution of 1:100



### Immunohistochemistry

**Image 2.** Immunohistochemistry of paraffin-embedded human skeletal muscle tissue using ABIN7162147 at dilution of 1:100