



[Go to Product page](#)

Datasheet for ABIN7162155
anti-OLFML3 antibody (AA 201-406)

3 Images

Overview

Quantity:	100 µg
Target:	OLFML3
Binding Specificity:	AA 201-406
Reactivity:	Human
Host:	Rabbit
Clonality:	Polyclonal
Conjugate:	This OLFML3 antibody is un-conjugated
Application:	ELISA, Western Blotting (WB), Immunohistochemistry (IHC)

Product Details

Immunogen:	Recombinant Human Olfactomedin-like protein 3 protein (201-406AA)
Isotype:	IgG
Cross-Reactivity:	Human, Rat
Purification:	>95%, Protein G purified

Target Details

Target:	OLFML3
Alternative Name:	OLFML3 (OLFML3 Products)
Background:	Background: Secreted scaffold protein that plays an essential role in dorsoventral patterning during early development. Stabilizes axial formation by restricting chordin (CHRD) activity on

Target Details

the dorsal side. Acts by facilitating the association between the tolloid proteases and their substrate chordin (CHRD), leading to enhance chordin (CHRD) degradation (By similarity). May have matrix-related function involved in placental and embryonic development, or play a similar role in other physiological processes.

Aliases: HNOEL-iso antibody, hOLF44 antibody, OLF44 antibody, Olfactomedin like 3 antibody, Olfactomedin-like protein 3 antibody, OLFL3_HUMAN antibody, OLFML3 antibody

UniProt: [Q9NRN5](#)

Application Details

Application Notes: Recommended dilution: WB:1:500-1:5000, IHC:1:20-1:200,

Restrictions: For Research Use only

Handling

Format: Liquid

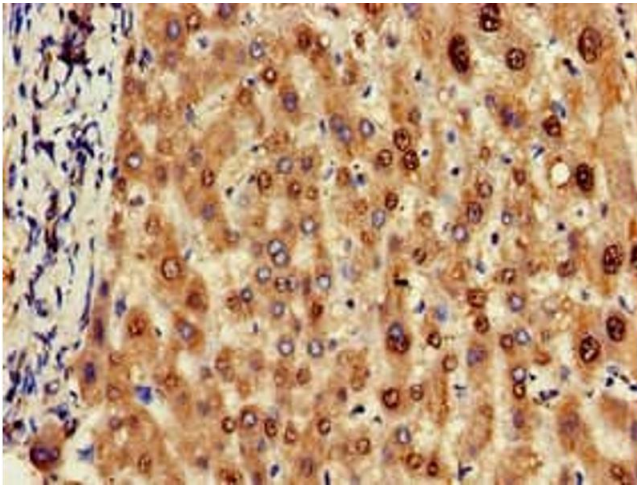
Buffer: Preservative: 0.03 % Proclin 300
Constituents: 50 % Glycerol, 0.01M PBS, pH 7.4

Preservative: ProClin

Precaution of Use: This product contains ProClin: a POISONOUS AND HAZARDOUS SUBSTANCE which should be handled by trained staff only.

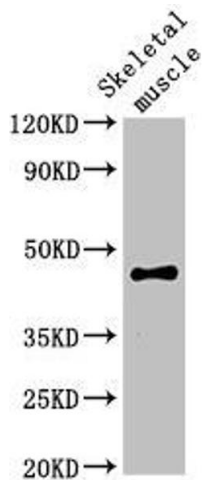
Storage: -20 °C,-80 °C

Storage Comment: Upon receipt, store at -20°C or -80°C. Avoid repeated freeze.



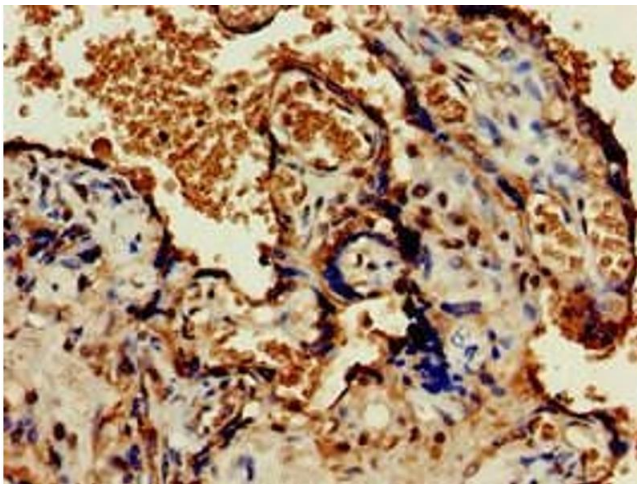
Immunohistochemistry

Image 1. Immunohistochemistry of paraffin-embedded human liver tissue using ABIN7162155 at dilution of 1:100



Western Blotting

Image 2. Western Blot Positive WB detected in: Rat skeletal muscle tissue All lanes: OLFML3 antibody at 2 µg/mL Secondary Goat polyclonal to rabbit IgG at 1/50000 dilution Predicted band size: 47, 44, 33 kDa Observed band size: 47 kDa



Immunohistochemistry

Image 3. Immunohistochemistry of paraffin-embedded human placenta tissue using ABIN7162155 at dilution of 1:100