



[Go to Product page](#)

Datasheet for ABIN7162226
anti-PLAC1L antibody (AA 74-158)

2 Images

Overview

Quantity:	100 µg
Target:	PLAC1L
Binding Specificity:	AA 74-158
Reactivity:	Human
Host:	Rabbit
Clonality:	Polyclonal
Conjugate:	This PLAC1L antibody is un-conjugated
Application:	ELISA, Immunohistochemistry (IHC)

Product Details

Immunogen:	Recombinant Human Oocyte-secreted protein 2 protein (74-158AA)
Isotype:	IgG
Cross-Reactivity:	Human
Purification:	>95%, Protein G purified

Target Details

Target:	PLAC1L
Alternative Name:	OOSP2 (PLAC1L Products)
Background:	FLJ36198 antibody, PLAC1L antibody, Placenta specific 1 like antibody, Placenta-specific 1-like protein antibody, PLACL_HUMAN antibody, TMEM122 antibody, Transmembrane protein 122

Target Details

antibody

UniProt: [Q86WS3](#)

Application Details

Application Notes: Recommended dilution: IHC:1:20-1:200,

Restrictions: For Research Use only

Handling

Format: Liquid

Buffer: Preservative: 0.03 % Proclin 300
Constituents: 50 % Glycerol, 0.01M PBS, PH 7.4

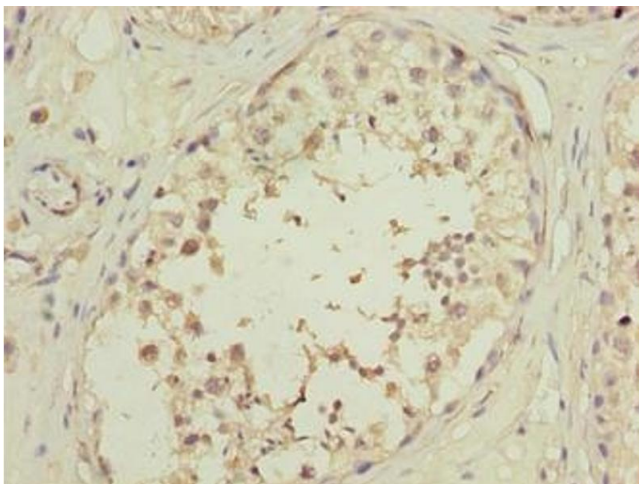
Preservative: ProClin

Precaution of Use: This product contains ProClin: a POISONOUS AND HAZARDOUS SUBSTANCE which should be handled by trained staff only.

Storage: -20 °C,-80 °C

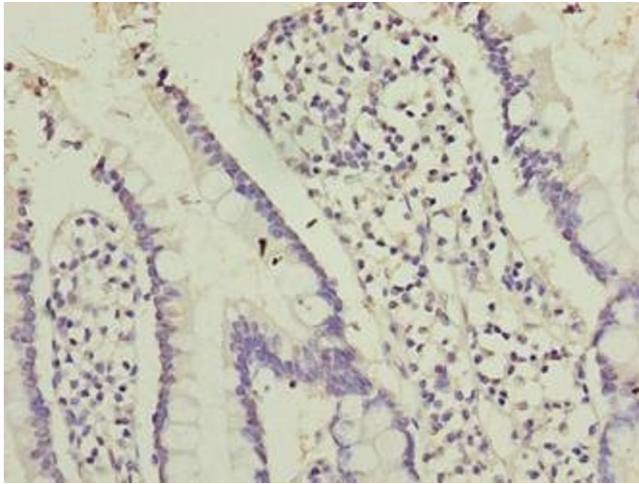
Storage Comment: Upon receipt, store at -20°C or -80°C. Avoid repeated freeze.

Images



Immunohistochemistry

Image 1. Immunohistochemistry of paraffin-embedded human testis tissue using ABIN7162226 at dilution of 1:100



Immunohistochemistry

Image 2. Immunohistochemistry of paraffin-embedded human small intestine tissue using ABIN7162226 at dilution of 1:100