

Datasheet for ABIN7162275  
**anti-ORC6 antibody (AA 1-252)**[Go to Product page](#)

## 2 Images

## Overview

Quantity:	100 µL
Target:	ORC6
Binding Specificity:	AA 1-252
Reactivity:	Human
Host:	Rabbit
Clonality:	Polyclonal
Conjugate:	This ORC6 antibody is un-conjugated
Application:	Western Blotting (WB), ELISA, Immunohistochemistry (IHC)

## Product Details

Immunogen:	Recombinant Human Origin recognition complex subunit 6 protein (1-252AA)
Isotype:	IgG
Cross-Reactivity:	Human, Mouse
Purification:	Antigen Affinity Purified

## Target Details

Target:	ORC6
Alternative Name:	ORC6 ( <a href="#">ORC6 Products</a> )
Background:	Background: Component of the origin recognition complex (ORC) that binds origins of replication. DNA-binding is ATP-dependent. The specific DNA sequences that define origins of

## Target Details

replication have not been identified yet. ORC is required to assemble the pre-replication complex necessary to initiate DNA replication. Does not bind histone H3 and H4 trimethylation marks H3K9me3, H3K27me3 and H4K20me3.

Aliases: ORC 6 antibody, Orc6 antibody, ORC6\_HUMAN antibody, ORC6L antibody, Origin recognition complex subunit 6 antibody, origin recognition complex subunit 6 homolog like antibody, origin recognition complex subunit 6 homolog like (yeast) antibody, origin recognition complex subunit 6 like (yeast) antibody

UniProt: [Q9Y5N6](#)

Pathways: [Mitotic G1-G1/S Phases](#), [DNA Replication](#), [M Phase](#), [Synthesis of DNA](#)

## Application Details

Application Notes: Recommended dilution: WB:1:500-1:2000, IHC:1:20-1:200,

Restrictions: For Research Use only

## Handling

Format: Liquid

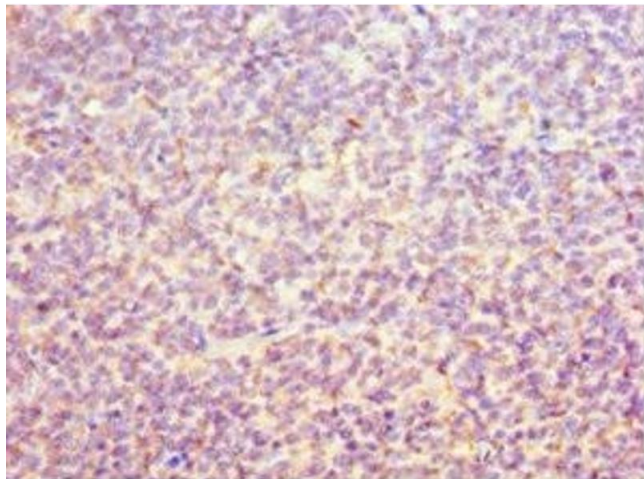
Buffer: PBS with 0.02 % sodium azide, 50 % glycerol, pH 7.3.

Preservative: Sodium azide

Precaution of Use: This product contains Sodium azide: a POISONOUS AND HAZARDOUS SUBSTANCE which should be handled by trained staff only.

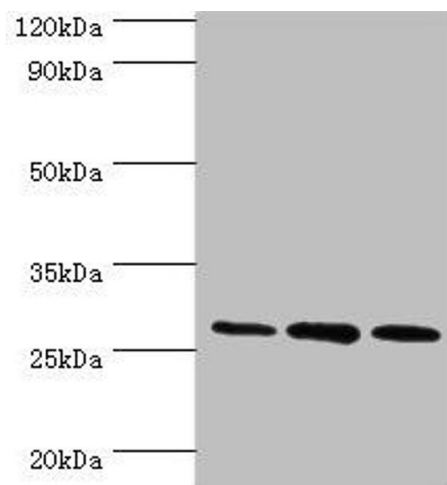
Storage: -20 °C, -80 °C

Storage Comment: Upon receipt, store at -20°C or -80°C. Avoid repeated freeze.



#### Immunohistochemistry

**Image 1.** Immunohistochemistry of paraffin-embedded human tonsil tissue using ABIN7162275 at dilution of 1:100



#### Western Blotting

**Image 2.** Western blot All lanes: ORC6 antibody at 16 µg/mL  
Lane 1: Mouse spleen tissue Lane 2: MCF-7 whole cell lysate Lane 3: Hela whole cell lysate Secondary Goat polyclonal to rabbit IgG at 1/10000 dilution Predicted band size: 28 kDa Observed band size: 28 kDa