

Datasheet for ABIN7162313
anti-Osteocrin antibody (AA 28-133)[Go to Product page](#)

1 Image

Overview

Quantity:	100 µL
Target:	Osteocrin (OSTN)
Binding Specificity:	AA 28-133
Reactivity:	Human
Host:	Rabbit
Clonality:	Polyclonal
Conjugate:	This Osteocrin antibody is un-conjugated
Application:	ELISA, Immunohistochemistry (IHC)

Product Details

Immunogen:	Recombinant Human Osteocrin protein (28-133aa)
Isotype:	IgG
Cross-Reactivity:	Human
Purification:	>95%, Protein G purified

Target Details

Target:	Osteocrin (OSTN)
Alternative Name:	OSTN (OSTN Products)
Background:	Background: Hormone that acts as a regulator of dendritic growth in the developing cerebral cortex in response to sensory experience (PubMed:27830782). Induced in the brain following

Target Details

membrane depolarization and inhibits dendritic branching in neurons of the developing cortex (PubMed:27830782). Probably acts by binding to natriuretic peptide receptor NPR3/NPR-C, thereby preventing binding between NPR3/NPR-C and natriuretic peptides, leading to increase cGMP production (By similarity).

Aliases: Osteocrin (Musclin) [Cleaved into: Processed Osteocrin], OSTN

UniProt: [P61366](#)

Pathways: [Hormone Activity](#)

Application Details

Application Notes: Recommended dilution: IHC:1:100-1:500,

Restrictions: For Research Use only

Handling

Format: Liquid

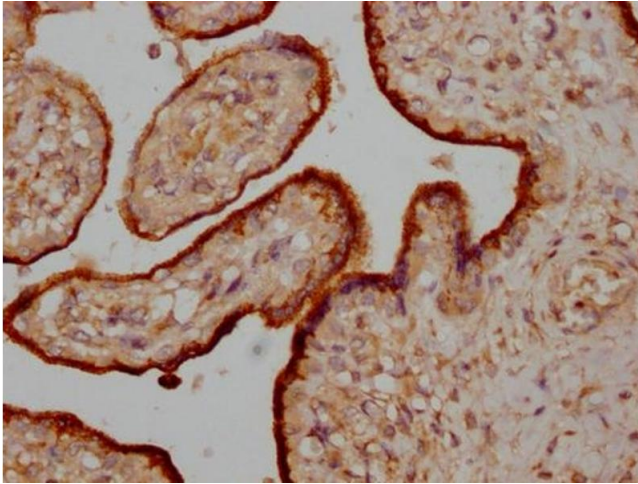
Buffer: Preservative: 0.03 % Proclin 300
Constituents: 50 % Glycerol, 0.01M PBS, pH 7.4

Preservative: ProClin

Precaution of Use: This product contains ProClin: a POISONOUS AND HAZARDOUS SUBSTANCE which should be handled by trained staff only.

Storage: -20 °C,-80 °C

Storage Comment: Upon receipt, store at -20°C or -80°C. Avoid repeated freeze.



Immunohistochemistry

Image 1. IHC image of ABIN7162313 diluted at 1:200 and staining in paraffin-embedded human placenta tissue performed on a Leica Bond™ system. After dewaxing and hydration, antigen retrieval was mediated by high pressure in a citrate buffer (pH 6.0). Section was blocked with 10 % normal goat serum 30 min at RT. Then primary antibody (1 % BSA) was incubated at 4 °C overnight. The primary is detected by a Goat anti-rabbit IgG labeled by HRP and visualized using 0.05 % DAB.