

Datasheet for ABIN7162317
anti-Osteomodulin antibody (AA 339-411)[Go to Product page](#)

3 Images

Overview

Quantity:	100 µg
Target:	Osteomodulin (OMD)
Binding Specificity:	AA 339-411
Reactivity:	Human
Host:	Rabbit
Clonality:	Polyclonal
Conjugate:	This Osteomodulin antibody is un-conjugated
Application:	Western Blotting (WB), ELISA, Immunohistochemistry (IHC)

Product Details

Immunogen:	Recombinant Human Osteomodulin protein (339-411AA)
Isotype:	IgG
Cross-Reactivity:	Human
Purification:	>95%, Protein G purified

Target Details

Target:	Osteomodulin (OMD)
Alternative Name:	OMD (OMD Products)
Background:	Background: May be implicated in biomineralization processes. Has a function in binding of osteoblasts via the alpha(V)beta(3)-integrin (By similarity).

Target Details

Aliases: OMD antibody, SLRR2C antibody, UNQ190/PRO216 antibody, Osteomodulin antibody, Keratan sulfate proteoglycan osteomodulin antibody, KSPG osteomodulin antibody, Osteoadherin antibody, OSAD antibody

UniProt: [Q99983](#)

Pathways: [Glycosaminoglycan Metabolic Process](#)

Application Details

Application Notes: Recommended dilution: WB:1:500-1:5000, IHC:1:200-1:500,

Restrictions: For Research Use only

Handling

Format: Liquid

Buffer: Preservative: 0.03 % Proclin 300
Constituents: 50 % Glycerol, 0.01M PBS, pH 7.4

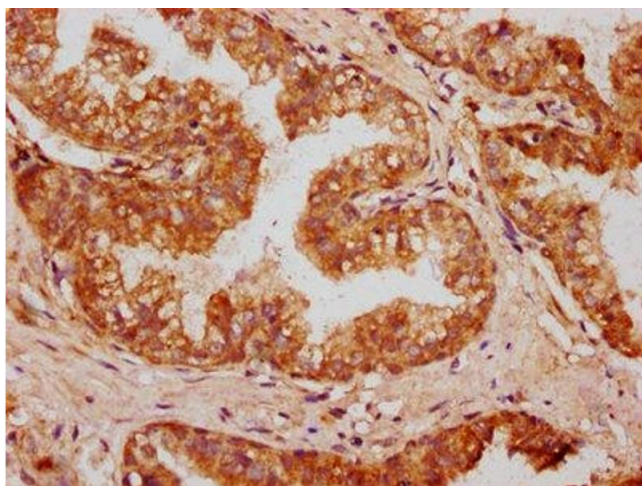
Preservative: ProClin

Precaution of Use: This product contains ProClin: a POISONOUS AND HAZARDOUS SUBSTANCE which should be handled by trained staff only.

Storage: -20 °C,-80 °C

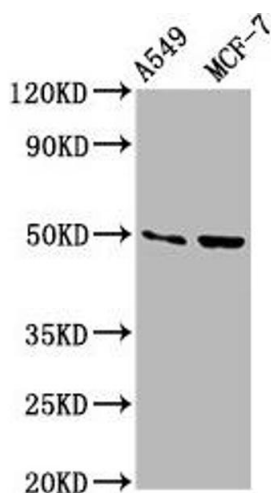
Storage Comment: Upon receipt, store at -20°C or -80°C. Avoid repeated freeze.

Images



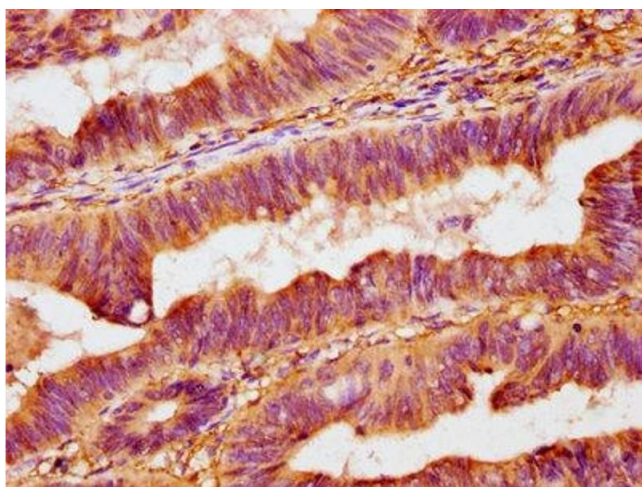
Immunohistochemistry

Image 1. IHC image of ABIN7162317 diluted at 1:400 and staining in paraffin-embedded human prostate cancer performed on a Leica Bond™ system. After dewaxing and hydration, antigen retrieval was mediated by high pressure in a citrate buffer (pH 6.0). Section was blocked with 10% normal goat serum 30min at RT. Then primary antibody (1% BSA) was incubated at 4°C overnight. The primary is detected by a biotinylated secondary antibody and visualized using an HRP conjugated SP system.



Western Blotting

Image 2. Western Blot Positive WB detected in: A549 whole cell lysate, MCF-7 whole cell lysate All lanes: OMD antibody at 3.5 µg/mL Secondary Goat polyclonal to rabbit IgG at 1/50000 dilution Predicted band size: 50 kDa Observed band size: 50 kDa



Immunohistochemistry

Image 3. IHC image of ABIN7162317 diluted at 1:400 and staining in paraffin-embedded human colon cancer performed on a Leica Bond™ system. After dewaxing and hydration, antigen retrieval was mediated by high pressure in a citrate buffer (pH 6.0). Section was blocked with 10% normal goat serum 30min at RT. Then primary antibody (1% BSA) was incubated at 4°C overnight. The primary is detected by a biotinylated secondary antibody and visualized using an HRP conjugated SP system.