



[Go to Product page](#)

Datasheet for ABIN7162352
anti-OCC-1 antibody (AA 1-63)

2 Images

Overview

Quantity:	100 µg
Target:	OCC-1 (C12ORF75)
Binding Specificity:	AA 1-63
Reactivity:	Human
Host:	Rabbit
Clonality:	Polyclonal
Conjugate:	This OCC-1 antibody is un-conjugated
Application:	ELISA, Immunohistochemistry (IHC)

Product Details

Immunogen:	Recombinant Human Overexpressed in colon carcinoma 1 protein (1-63AA)
Isotype:	IgG
Cross-Reactivity:	Human
Purification:	>95%, Protein G purified

Target Details

Target:	OCC-1 (C12ORF75)
Alternative Name:	OCC1 (C12ORF75 Products)
Background:	Adipogenesis down regulated 3 antibody, AGD3 antibody, C12orf75 antibody, Chromosome 12 open reading frame 75 antibody, Hypothetical protein LOC387882 antibody, MGC148100

Target Details

antibody, MGC149157 antibody, OCC 1 antibody, OCC-1 antibody, OCC1 antibody, OCC1_HUMAN antibody, Overexpressed in colon carcinoma 1 antibody, Overexpressed in colon carcinoma 1 protein antibody, Putative overexpressed in colon carcinoma 1 protein antibody

UniProt: [Q8TAD7](#)

Application Details

Application Notes: Recommended dilution: IHC:1:500-1:1000,

Restrictions: For Research Use only

Handling

Format: Liquid

Buffer: Preservative: 0.03 % Proclin 300
Constituents: 50 % Glycerol, 0.01M PBS, pH 7.4

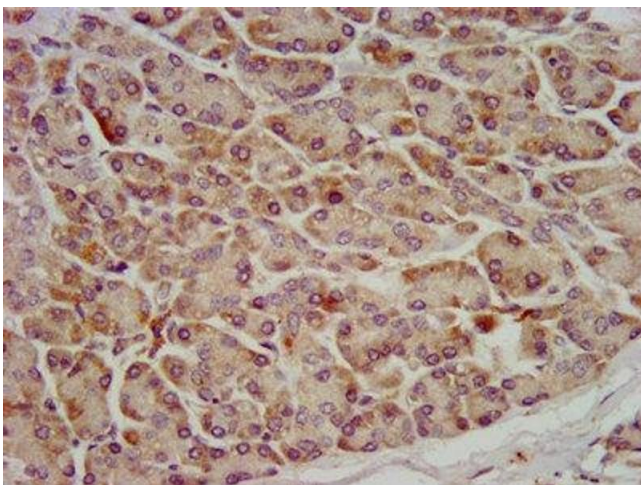
Preservative: ProClin

Precaution of Use: This product contains ProClin: a POISONOUS AND HAZARDOUS SUBSTANCE which should be handled by trained staff only.

Storage: -20 °C,-80 °C

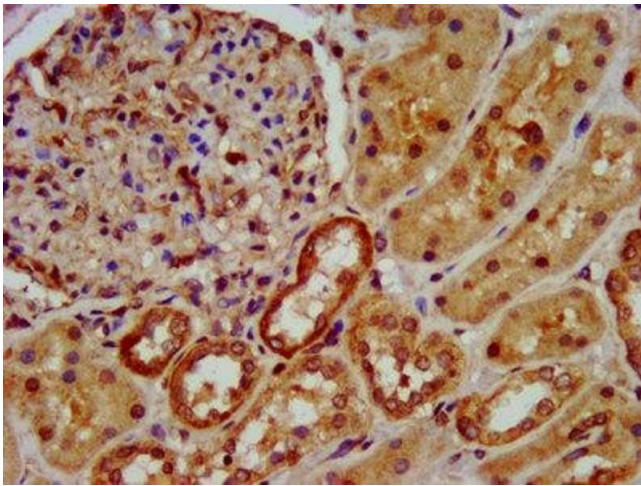
Storage Comment: Upon receipt, store at -20°C or -80°C. Avoid repeated freeze.

Images



Immunohistochemistry

Image 1. IHC image of ABIN7162352 diluted at 1:600 and staining in paraffin-embedded human pancreatic tissue performed on a Leica Bond™ system. After dewaxing and hydration, antigen retrieval was mediated by high pressure in a citrate buffer (pH 6.0). Section was blocked with 10% normal goat serum 30min at RT. Then primary antibody (1% BSA) was incubated at 4°C overnight. The primary is detected by a biotinylated secondary antibody and visualized using an HRP conjugated SP system.



Immunohistochemistry

Image 2. IHC image of ABIN7162352 diluted at 1:600 and staining in paraffin-embedded human kidney tissue performed on a Leica Bond™ system. After dewaxing and hydration, antigen retrieval was mediated by high pressure in a citrate buffer (pH 6.0). Section was blocked with 10% normal goat serum 30min at RT. Then primary antibody (1% BSA) was incubated at 4°C overnight. The primary is detected by a biotinylated secondary antibody and visualized using an HRP conjugated SP system.