

Datasheet for ABIN7162471  
**anti-PAN2 antibody (AA 628-908)**



[Go to Product page](#)

2 Images

## Overview

Quantity:	100 µg
Target:	PAN2
Binding Specificity:	AA 628-908
Reactivity:	Human
Host:	Rabbit
Clonality:	Polyclonal
Conjugate:	This PAN2 antibody is un-conjugated
Application:	ELISA, Immunohistochemistry (IHC), Immunofluorescence (IF)

## Product Details

Immunogen:	Recombinant Human PAB-dependent poly(A)-specific ribonuclease subunit PAN2 protein (628-908AA)
Isotype:	IgG
Cross-Reactivity:	Human
Purification:	>95%, Protein G purified

## Target Details

Target:	PAN2
Alternative Name:	PAN2 ( <a href="#">PAN2 Products</a> )
Background:	Background: Catalytic subunit of the poly(A)-nuclease (PAN) deadenylation complex, one of two

## Target Details

---

cytoplasmic mRNA deadenylases involved in general and miRNA-mediated mRNA turnover. PAN specifically shortens poly(A) tails of RNA when the poly(A) stretch is bound by poly(A)-binding protein (PABP), which is followed by rapid degradation of the shortened mRNA tails by the CCR4-NOT complex. Deadenylated mRNAs are then degraded by two alternative mechanisms, namely exosome-mediated 3'→5' exonucleolytic degradation, or deadenylation-dependent mRNA decapping and subsequent 5'→3' exonucleolytic degradation by XRN1.

Aliases: hPan2 antibody, Inactive ubiquitin carboxyl terminal hydrolase 52 antibody, Inactive ubiquitin carboxyl-terminal hydrolase 52 antibody, KIAA0710 antibody, PAB dependent poly(A) specific ribonuclease subunit 2 antibody, PAB-dependent poly(A)-specific ribonuclease subunit 2 antibody, PABP dependent poly(A) nuclease 2 antibody, PAN 2 antibody, PAN2 antibody, PAN2 homolog PABP1 dependent poly A specific ribonuclease subunit antibody, PAN2 poly(A) specific ribonuclease subunit homolog antibody, PAN2 polyA specific ribonuclease subunit homolog antibody, PAN2\_HUMAN antibody, Ubiquitin specific peptidase 52 antibody, Ubiquitin specific protease 52 antibody, USP 52 antibody, USP52 antibody

---

UniProt: [Q504Q3](#)

## Application Details

---

Application Notes: Recommended dilution: IHC:1:20-1:200, IF:1:50-1:200,

Restrictions: For Research Use only

## Handling

---

Format: Liquid

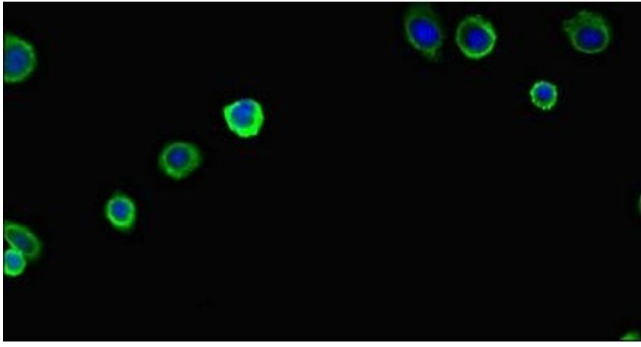
Buffer: Preservative: 0.03 % Proclin 300  
Constituents: 50 % Glycerol, 0.01M PBS, PH 7.4

Preservative: ProClin

Precaution of Use: This product contains ProClin: a POISONOUS AND HAZARDOUS SUBSTANCE which should be handled by trained staff only.

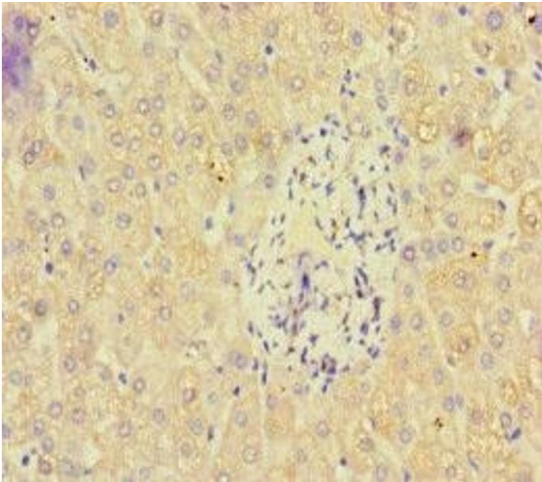
Storage: -20 °C,-80 °C

Storage Comment: Upon receipt, store at -20°C or -80°C. Avoid repeated freeze.



#### Immunofluorescence

**Image 1.** Immunofluorescent analysis of HepG2 cells using ABIN7162471 at dilution of 1:100 and Alexa Fluor 488-conjugated AffiniPure Goat Anti-Rabbit IgG(H+L)



#### Immunohistochemistry

**Image 2.** Immunohistochemistry of paraffin-embedded human liver tissue using ABIN7162471 at dilution of 1:100