



[Go to Product page](#)

Datasheet for ABIN7162499  
**anti-PAX4 antibody (AA 50-200)**

2 Images

### Overview

Quantity:	100 µL
Target:	PAX4
Binding Specificity:	AA 50-200
Reactivity:	Human
Host:	Rabbit
Clonality:	Polyclonal
Conjugate:	This PAX4 antibody is un-conjugated
Application:	Western Blotting (WB), ELISA, Immunohistochemistry (IHC)

### Product Details

Immunogen:	Recombinant Human Paired box protein Pax-4 protein (50-200AA)
Isotype:	IgG
Cross-Reactivity:	Human, Mouse
Purification:	Antigen Affinity purified

### Target Details

Target:	PAX4
Alternative Name:	PAX4 ( <a href="#">PAX4 Products</a> )
Background:	Background: Plays an important role in the differentiation and development of pancreatic islet beta cells. Transcriptional repressor that binds to a common element in the glucagon, insulin

## Target Details

and somatostatin promoters. Competes with PAX6 for this same promoter binding site. Isoform 2 appears to be a dominant negative form antagonizing PAX4 transcriptional activity. Aliases: KPD antibody, MGC129960 antibody, MODY9 antibody, Paired box 4 antibody, Paired box gene 4 antibody, paired box homeotic gene 4 antibody, Paired box protein Pax-4 antibody, Paired domain gene 4 antibody, Pax4 antibody, PAX4\_HUMAN antibody

UniProt: [O43316](#)

## Application Details

Application Notes: Recommended dilution: WB:1:500-1:2000, IHC:1:20-1:200,

Restrictions: For Research Use only

## Handling

Format: Liquid

Buffer: PBS with 0.02 % sodium azide, 50 % glycerol, pH 7.3.

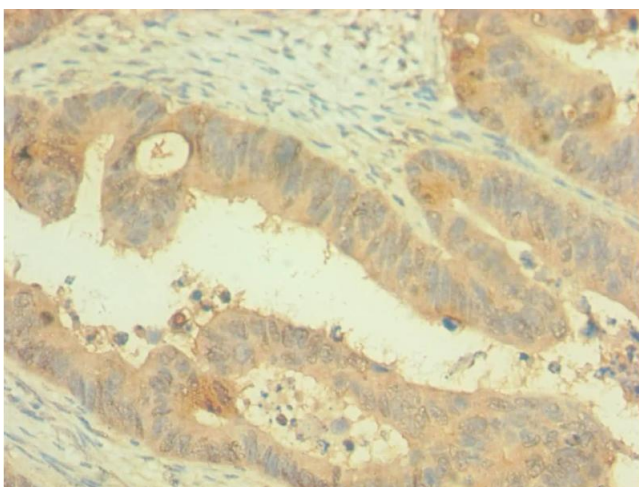
Preservative: Sodium azide

Precaution of Use: This product contains Sodium azide: a POISONOUS AND HAZARDOUS SUBSTANCE which should be handled by trained staff only.

Storage: -20 °C,-80 °C

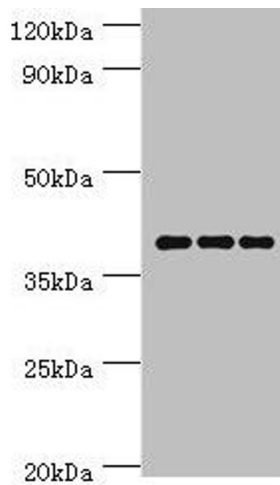
Storage Comment: Upon receipt, store at -20°C or -80°C. Avoid repeated freeze.

## Images



### Immunohistochemistry

**Image 1.** Immunohistochemistry of paraffin-embedded human colon cancer using ABIN7162499 at dilution of 1:100



### Western Blotting

**Image 2.** Western blot All lanes: Paired box protein Pax-4 antibody at 6  $\mu\text{g}/\text{mL}$  Lane 1: Hela whole cell lysate Lane 2: K562 whole cell lysate Lane 3: Mouse pancreatic Secondary Goat polyclonal to rabbit IgG at 1/10000 dilution Predicted band size: 38, 30 kDa Observed band size: 38 kDa