

Datasheet for ABIN7162500
anti-PAX5 antibody (AA 362-391)[Go to Product page](#)

2 Images

Overview

Quantity:	100 µg
Target:	PAX5
Binding Specificity:	AA 362-391
Reactivity:	Human
Host:	Rabbit
Clonality:	Polyclonal
Conjugate:	This PAX5 antibody is un-conjugated
Application:	Western Blotting (WB), ELISA, Immunofluorescence (IF)

Product Details

Immunogen:	Recombinant Human Paired box protein Pax-5 protein (362-391AA)
Isotype:	IgG
Cross-Reactivity:	Human
Purification:	>95%, Protein G purified

Target Details

Target:	PAX5
Alternative Name:	PAX5 (PAX5 Products)
Background:	Background: May play an important role in B-cell differentiation as well as neural development and spermatogenesis. Involved in the regulation of the CD19 gene, a B-lymphoid-specific target

Target Details

gene.

Aliases: B cell lineage specific activator antibody, B cell lineage specific activator protein antibody, B cell specific activator protein antibody, B cell specific transcription factor antibody, B-cell-specific transcription factor antibody, BSAP antibody, EBB-1 antibody, KLP antibody, Paired box 5 antibody, Paired box gene 5 (B cell lineage specific activator protein) antibody, Paired box gene 5 (B cell lineage specific activator) antibody, Paired box gene 5 antibody, Paired box homeotic gene 5 antibody, Paired box protein Pax 5 antibody, Paired box protein Pax-5 antibody, Paired domain gene 5 antibody, PAX 5 antibody, PAX5 antibody, PAX5_HUMAN antibody, Transcription factor PAX 5 antibody

UniProt: [Q02548](#)

Application Details

Application Notes: Recommended dilution: WB:1:500-1:5000, IF:1:50-1:200,

Restrictions: For Research Use only

Handling

Format: Liquid

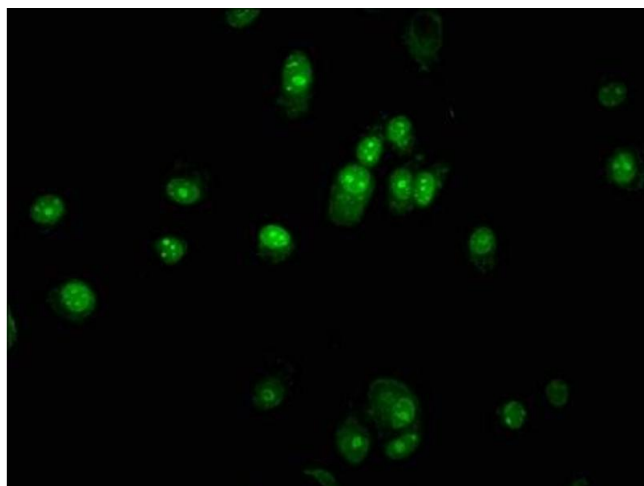
Buffer: Preservative: 0.03 % Proclin 300
Constituents: 50 % Glycerol, 0.01M PBS, pH 7.4

Preservative: ProClin

Precaution of Use: This product contains ProClin: a POISONOUS AND HAZARDOUS SUBSTANCE which should be handled by trained staff only.

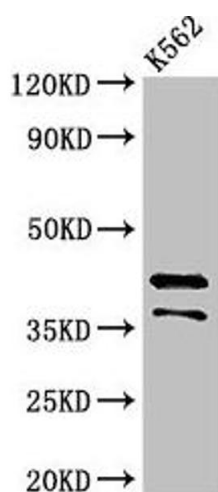
Storage: -20 °C, -80 °C

Storage Comment: Upon receipt, store at -20°C or -80°C. Avoid repeated freeze.



Immunofluorescence

Image 1. Immunofluorescence staining of MCF-7 cells with ABIN7162500 at 1:133, counter-stained with DAPI. The cells were fixed in 4% formaldehyde, permeabilized using 0.2% Triton X-100 and blocked in 10% normal Goat Serum. The cells were then incubated with the antibody overnight at 4°C. The secondary antibody was Alexa Fluor 488-conjugated AffiniPure Goat Anti-Rabbit IgG(H+L).



Western Blotting

Image 2. Western Blot Positive WB detected in: K562 whole cell lysate All lanes: PAX5 antibody at 3.2 µg/mL Secondary Goat polyclonal to rabbit IgG at 1/50000 dilution Predicted band size: 43, 39, 36, 33, 32, 38, 35 kDa Observed band size: 43, 36 kDa