



[Go to Product page](#)

Datasheet for ABIN7162505  
**anti-PAX6 antibody (AA 1-300)**

3 Images

### Overview

Quantity:	100 µL
Target:	PAX6
Binding Specificity:	AA 1-300
Reactivity:	Human
Host:	Rabbit
Clonality:	Polyclonal
Conjugate:	This PAX6 antibody is un-conjugated
Application:	Western Blotting (WB), ELISA, Immunohistochemistry (IHC)

### Product Details

Immunogen:	Recombinant Human Paired box protein Pax-6 protein (1-300AA)
Isotype:	IgG
Cross-Reactivity:	Human, Mouse
Purification:	Antigen Affinity Purified

### Target Details

Target:	PAX6
Alternative Name:	PAX6 ( <a href="#">PAX6 Products</a> )
Background:	Background: Transcription factor with important functions in the development of the eye, nose, central nervous system and pancreas. Required for the differentiation of pancreatic islet alpha

## Target Details

---

cells (By similarity). Competes with PAX4 in binding to a common element in the glucagon, insulin and somatostatin promoters. Regulates specification of the ventral neuron subtypes by establishing the correct progenitor domains (By similarity). Isoform 5a appears to function as a molecular switch that specifies target genes.

Aliases: AN 2 antibody, AN antibody, AN2 antibody, Aniridia type II protein antibody, D11S812E antibody, FVH1 antibody, KIAA0552 antibody, Leucine zipper putative tumor suppressor 3 antibody, LZTS3 antibody, MGC17209 antibody, MGDA antibody, Oculorhombin antibody, Paired box 6 antibody, Paired box gene 6 (aniridia keratitis) antibody, Paired Box Gene 6 antibody, Paired box homeotic gene 6 antibody, Paired box protein Pax-6 antibody, Paired box protein Pax6 antibody, PAX 6 antibody, PAX6 antibody, PAX6\_HUMAN antibody, ProSAP-interacting protein 1 antibody, PROSAPIP1 antibody, Sey antibody, WAGR antibody

---

UniProt: [P26367](#)

---

Pathways: [Peptide Hormone Metabolism](#), [Carbohydrate Homeostasis](#)

## Application Details

---

Application Notes: Recommended dilution: WB:1:500-1:2000, IHC:1:20-1:200,

---

Restrictions: For Research Use only

## Handling

---

Format: Liquid

---

Buffer: PBS with 0.02 % sodium azide, 50 % glycerol, pH 7.3.

---

Preservative: Sodium azide

---

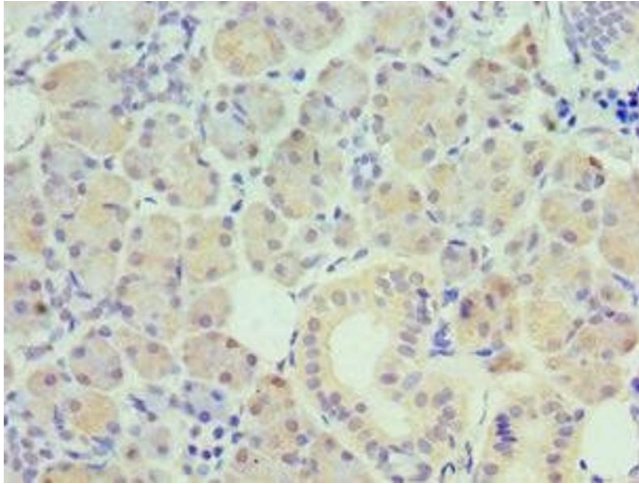
Precaution of Use: This product contains Sodium azide: a POISONOUS AND HAZARDOUS SUBSTANCE which should be handled by trained staff only.

---

Storage: -20 °C,-80 °C

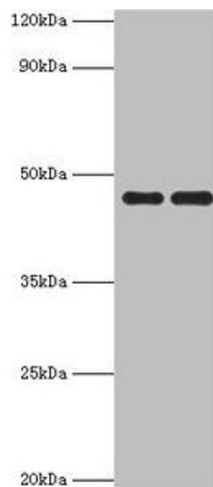
---

Storage Comment: Upon receipt, store at -20°C or -80°C. Avoid repeated freeze.



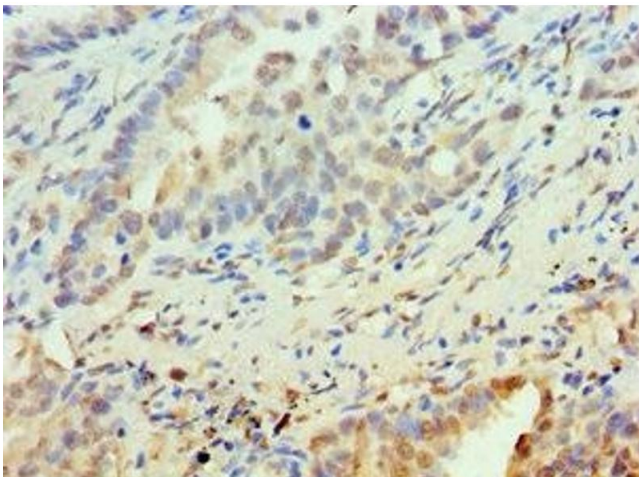
### Immunohistochemistry

**Image 1.** Immunohistochemistry of paraffin-embedded human pancreatic tissue using ABIN7162505 at dilution of 1:100



### Western Blotting

**Image 2.** Western blot All lanes: Paired box protein Pax-6 antibody at 1 µg/mL Lane 1: Mouse stomach tissue Lane 2: Mouse eye tissue Secondary Goat polyclonal to rabbit IgG at 1/10000 dilution Predicted band size: 47, 49 kDa Observed band size: 47 kDa



### Immunohistochemistry

**Image 3.** Immunohistochemistry of paraffin-embedded human lung cancer using ABIN7162505 at dilution of 1:100