

Datasheet for ABIN7162515  
**anti-PILRA antibody (AA 22-226)**



[Go to Product page](#)

1 Image

## Overview

Quantity:	100 µg
Target:	PILRA
Binding Specificity:	AA 22-226
Reactivity:	Human
Host:	Rabbit
Clonality:	Polyclonal
Conjugate:	This PILRA antibody is un-conjugated
Application:	ELISA, Immunohistochemistry (IHC)

## Product Details

Immunogen:	Recombinant Human Paired immunoglobulin-like type 2 receptor alpha protein (22-226AA)
Isotype:	IgG
Cross-Reactivity:	Human
Purification:	>95%, Protein G purified

## Target Details

Target:	PILRA
Alternative Name:	PILRA ( <a href="#">PILRA Products</a> )
Background:	Background: Paired receptors consist of highly related activating and inhibitory receptors and are widely involved in the regulation of the immune system. PILRA is thought to act as a cellular

## Target Details

---

signaling inhibitory receptor by recruiting cytoplasmic phosphatases like PTPN6/SHP-1 and PTPN11/SHP-2 via their SH2 domains that block signal transduction through dephosphorylation of signaling molecules. Receptor for PIANP.

Aliases: Cell surface receptor FDF03 antibody, FDF03 antibody, Inhibitory receptor PILR-alpha antibody, paired immunoglobulin-like receptor alpha antibody, Paired immunoglobulin-like type 2 receptor alpha antibody, PILRA antibody, PILRA\_HUMAN antibody

---

UniProt: [Q9UKJ1](#)

## Application Details

---

Application Notes: Recommended dilution: IHC:1:20-1:200,

Restrictions: For Research Use only

## Handling

---

Format: Liquid

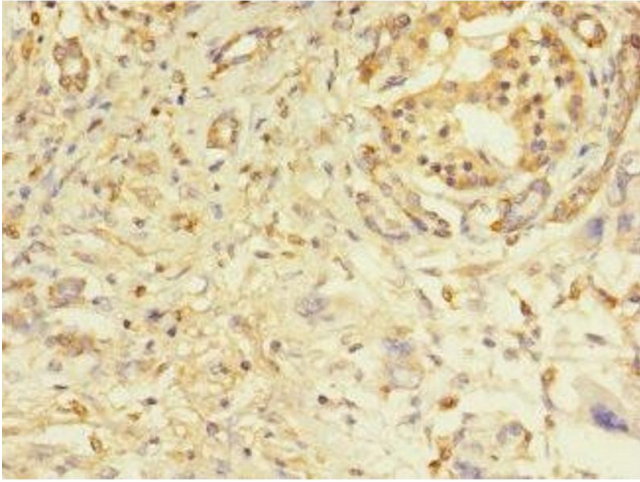
Buffer: Preservative: 0.03 % Proclin 300  
Constituents: 50 % Glycerol, 0.01M PBS, PH 7.4

Preservative: ProClin

Precaution of Use: This product contains ProClin: a POISONOUS AND HAZARDOUS SUBSTANCE which should be handled by trained staff only.

Storage: -20 °C,-80 °C

Storage Comment: Upon receipt, store at -20°C or -80°C. Avoid repeated freeze.



#### Immunohistochemistry

**Image 1.** Immunohistochemistry of paraffin-embedded human pancreatic tissue using ABIN7162515 at dilution of 1:100