



[Go to Product page](#)

Datasheet for ABIN7162539  
**anti-ZDHHC16 antibody (AA 288-377)**

1 Image

### Overview

Quantity:	100 µL
Target:	ZDHHC16
Binding Specificity:	AA 288-377
Reactivity:	Human
Host:	Rabbit
Clonality:	Polyclonal
Conjugate:	This ZDHHC16 antibody is un-conjugated
Application:	Western Blotting (WB), ELISA

### Product Details

Immunogen:	Recombinant Human Palmitoyltransferase ZDHHC16 protein (288-377AA)
Isotype:	IgG
Cross-Reactivity:	Human
Purification:	Antigen Affinity Purified

### Target Details

Target:	ZDHHC16
Alternative Name:	ZDHHC16 ( <a href="#">ZDHHC16 Products</a> )
Background:	Background: May be involved in apoptosis regulation. Aliases: ZDHHC16 antibody, APH2 antibody, UNQ2570/PRO6258Palmitoyltransferase

## Target Details

ZDHHC16 antibody, EC 2.3.1.225 antibody, Abl-philin 2 antibody, Zinc finger DHHC domain-containing protein 16 antibody, DHHC-16 antibody

UniProt: [Q969W1](#)

## Application Details

Application Notes: Recommended dilution: WB:1:1000-1:5000,

Restrictions: For Research Use only

## Handling

Format: Liquid

Buffer: PBS with 0.02 % sodium azide, 50 % glycerol, pH 7.3.

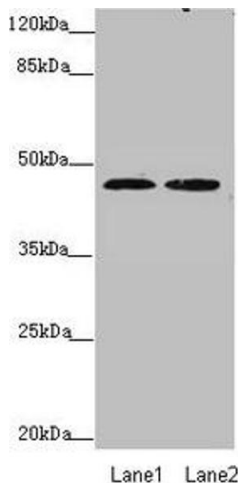
Preservative: Sodium azide

Precaution of Use: This product contains Sodium azide: a POISONOUS AND HAZARDOUS SUBSTANCE which should be handled by trained staff only.

Storage: -20 °C,-80 °C

Storage Comment: Upon receipt, store at -20°C or -80°C. Avoid repeated freeze.

## Images



### Western Blotting

**Image 1.** Western blot All lanes: ZDHHC16 antibody at 0.89  $\mu\text{g}/\text{mL}$  Lane 1: MCF-7 whole cell lysate Lane 2: HepG2 whole cell lysate Secondary Goat polyclonal to rabbit IgG at 1/10000 dilution Predicted band size: 44, 42, 39, 35 kDa Observed band size: 44 kDa