

Datasheet for ABIN7162558
anti-ZDHHC6 antibody (AA 227-409)



[Go to Product page](#)

4 Images

Overview

Quantity:	100 µg
Target:	ZDHHC6
Binding Specificity:	AA 227-409
Reactivity:	Human
Host:	Rabbit
Clonality:	Polyclonal
Conjugate:	This ZDHHC6 antibody is un-conjugated
Application:	Western Blotting (WB), ELISA, Immunohistochemistry (IHC), Immunofluorescence (IF)

Product Details

Immunogen:	Recombinant Human Palmitoyltransferase ZDHHC6 protein (227-409AA)
Isotype:	IgG
Cross-Reactivity:	Human, Mouse
Purification:	Antigen Affinity Purified

Target Details

Target:	ZDHHC6
Alternative Name:	ZDHHC6 (ZDHHC6 Products)
Background:	Background: Palmitoylates calnexin (CALX), which is required for its association with the ribosome-translocon complex and efficient folding of glycosylated proteins.

Target Details

Aliases: DHHC-6 antibody, FLJ21952 antibody, Probable palmitoyltransferase ZDHHC6 antibody, Transmembrane protein H4 antibody, ZDHC6_HUMAN antibody, Zdhhc6 antibody, Zinc finger DHHC domain-containing protein 6 antibody, Zinc finger protein 376 antibody, ZNF376 antibody

UniProt: [Q9H6R6](#)

Application Details

Application Notes: Recommended dilution: WB:1:500-1:2000, IHC:1:20-1:200, IF:1:50-1:200,

Restrictions: For Research Use only

Handling

Format: Liquid

Buffer: Preservative: 0.03 % Proclin 300
Constituents: 50 % Glycerol, 0.01M PBS, PH 7.4

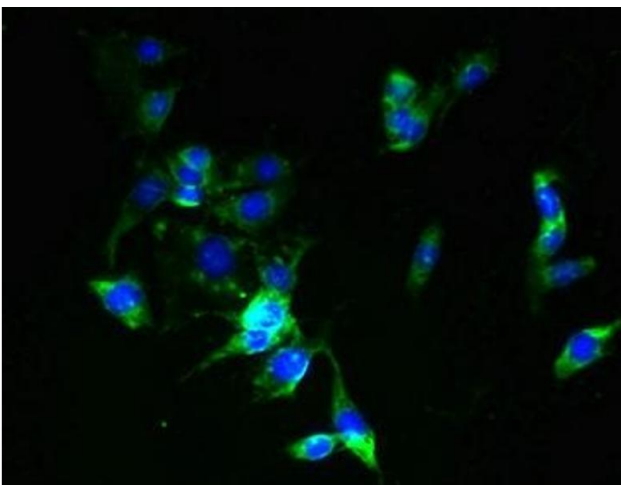
Preservative: ProClin

Precaution of Use: This product contains ProClin: a POISONOUS AND HAZARDOUS SUBSTANCE which should be handled by trained staff only.

Storage: -20 °C,-80 °C

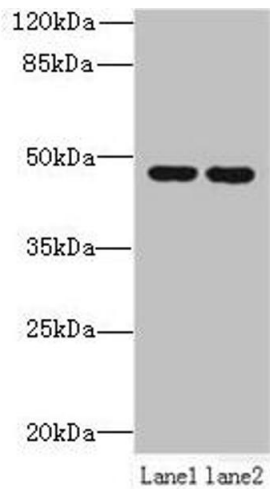
Storage Comment: Upon receipt, store at -20°C or -80°C. Avoid repeated freeze.

Images



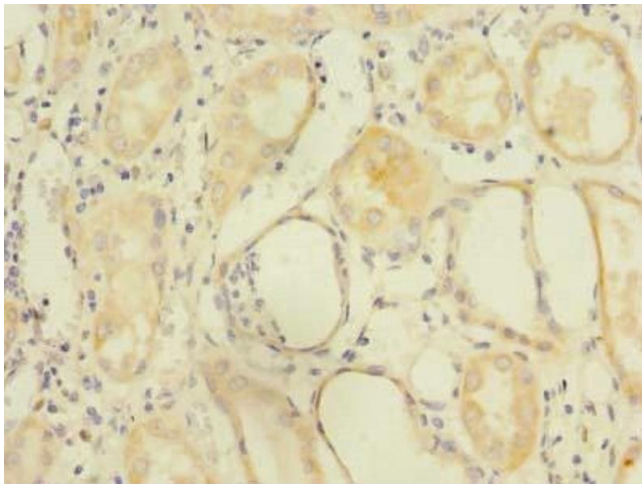
Immunofluorescence

Image 1. Immunofluorescent analysis of NIH/3T3 cells using ABIN7162558 at dilution of 1:100 and Alexa Fluor 488-conjugated AffiniPure Goat Anti-Rabbit IgG(H+L)



Western Blotting

Image 2. Western blot All lanes: ZDHHC6 antibody at 0.2 μ g/mL Lane 1: NIH/3T3 whole cell lysate Lane 2: K562 whole cell lysate Secondary Goat polyclonal to rabbit IgG at 1/10000 dilution Predicted band size: 48 kDa Observed band size: 48 kDa



Immunohistochemistry

Image 3. Immunohistochemistry of paraffin-embedded human kidney tissue using ABIN7162558 at dilution of 1:100

Please check the [product details page](#) for more images. Overall 4 images are available for ABIN7162558.