



[Go to Product page](#)

Datasheet for ABIN7162562
anti-PTF1A antibody (AA 224-325)

3 Images

Overview

Quantity:	100 µg
Target:	PTF1A
Binding Specificity:	AA 224-325
Reactivity:	Human
Host:	Rabbit
Clonality:	Polyclonal
Conjugate:	This PTF1A antibody is un-conjugated
Application:	Western Blotting (WB), ELISA, Immunohistochemistry (IHC), Immunofluorescence (IF)

Product Details

Immunogen:	Recombinant Human Pancreas transcription factor 1 subunit alpha protein (224-325AA)
Isotype:	IgG
Cross-Reactivity:	Human, Mouse, Rat
Purification:	>95%, Protein G purified

Target Details

Target:	PTF1A
Alternative Name:	PTF1A (PTF1A Products)
Background:	Background: Transcription factor implicated in the cell fate determination in various organs. Binds to the E-box consensus sequence 5'CANNTG-3'. Plays a role in early and late

Target Details

pancreas development and differentiation. Important for determining whether cells allocated to the pancreatic buds continue towards pancreatic organogenesis or revert back to duodenal fates. May be involved in the maintenance of exocrine pancreas-specific gene expression including ELA1 and amylase. Required for the formation of pancreatic acinar and ductal cells. Plays an important role in cerebellar development. Directly regulated by FOXN4 and RORC during retinal development, FOXN4-PTF1A pathway plays a central role in directing the differentiation of retinal progenitors towards horizontal and amacrine fates.

Aliases: bHLH transcription factor p48 antibody, bHLHa29 antibody, Class A basic helix-loop-helix protein 29 antibody, Class II bHLH protein PTF1A antibody, Exocrine pancreas specific transcription factor p48 antibody, p48 DNA binding subunit of transcription factor PTF1 antibody, p48 DNA-binding subunit of transcription factor PTF1 antibody, PACA antibody, PAGEN2 antibody, Pancreas specific transcription factor 1a antibody, Pancreas transcription factor 1 subunit alpha antibody, Pancreas-specific transcription factor 1a antibody, PTF 1A antibody, PTF1 p48 antibody, PTF1-p48 antibody, Ptf1a antibody, PTF1A_HUMAN antibody, PTF1P48 antibody

UniProt: [Q7RTS3](#)

Pathways: [Retinoic Acid Receptor Signaling Pathway](#)

Application Details

Application Notes: Recommended dilution: WB:1:500-1:5000, IHC:1:20-1:200, IF:1:50-1:200,

Restrictions: For Research Use only

Handling

Format: Liquid

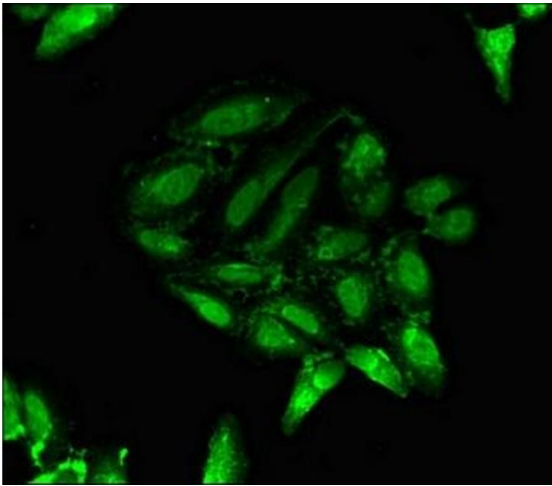
Buffer: Preservative: 0.03 % Proclin 300
Constituents: 50 % Glycerol, 0.01M PBS, pH 7.4

Preservative: ProClin

Precaution of Use: This product contains ProClin: a POISONOUS AND HAZARDOUS SUBSTANCE which should be handled by trained staff only.

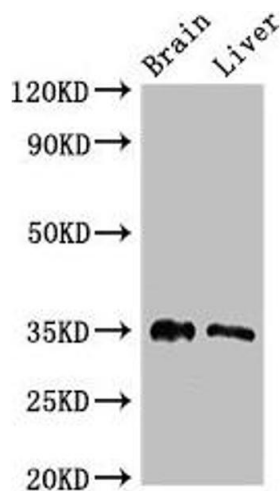
Storage: -20 °C,-80 °C

Storage Comment: Upon receipt, store at -20°C or -80°C. Avoid repeated freeze.



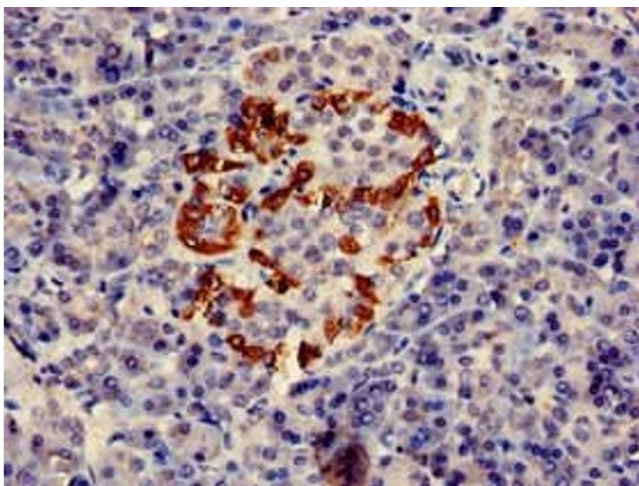
Immunofluorescence

Image 1. Immunofluorescent analysis of HeLa cells using ABIN7162562 at dilution of 1:100 and Alexa Fluor 488-conjugated AffiniPure Goat Anti-Rabbit IgG(H+L)



Western Blotting

Image 2. Western Blot Positive WB detected in: Mouse brain tissue, Rat liver tissue All lanes: PTF1A antibody at 2.7 μ g/mL Secondary Goat polyclonal to rabbit IgG at 1/50000 dilution Predicted band size: 35 kDa Observed band size: 35 kDa



Immunohistochemistry

Image 3. Immunohistochemistry of paraffin-embedded human pancreatic tissue using ABIN7162562 at dilution of 1:100