



Datasheet for ABIN7162566  
**anti-AMY2A antibody (AA 242-511)**



[Go to Product page](#)

3 Images

Overview

Quantity:	100 µL
Target:	AMY2A
Binding Specificity:	AA 242-511
Reactivity:	Human
Host:	Rabbit
Clonality:	Polyclonal
Conjugate:	This AMY2A antibody is un-conjugated
Application:	Western Blotting (WB), ELISA, Immunohistochemistry (IHC)

Product Details

Immunogen:	Recombinant Human Pancreatic alpha-amylase protein (242-511AA)
Isotype:	IgG
Cross-Reactivity:	Human, Mouse
Purification:	Antigen Affinity Purified

Target Details

Target:	AMY2A
Alternative Name:	AMY2A ( <a href="#">AMY2A Products</a> )
Background:	AMY2A antibody, Pancreatic alpha-amylase antibody, PA antibody, EC 3.2.1.1 antibody, 1,4-alpha-D-glucan glucohydrolase antibody

## Target Details

---

UniProt: [P04746](#)

## Application Details

---

Application Notes: Recommended dilution: WB:1:500-1:2000, IHC:1:20-1:200,

Restrictions: For Research Use only

## Handling

---

Format: Liquid

Buffer: PBS with 0.02 % sodium azide, 50 % glycerol, pH 7.3.

Preservative: Sodium azide

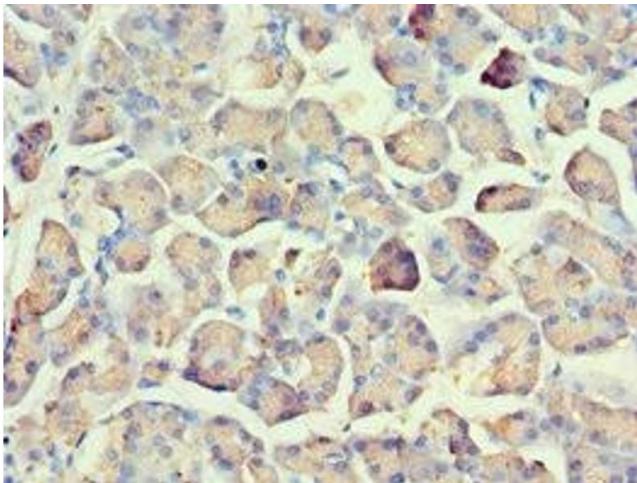
Precaution of Use: This product contains Sodium azide: a POISONOUS AND HAZARDOUS SUBSTANCE which should be handled by trained staff only.

Storage: -20 °C,-80 °C

Storage Comment: Upon receipt, store at -20°C or -80°C. Avoid repeated freeze.

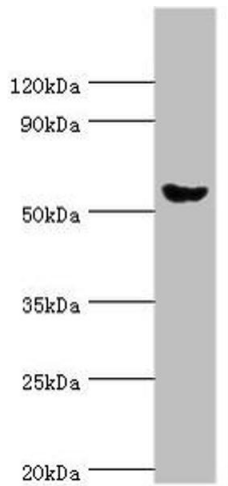
## Images

---



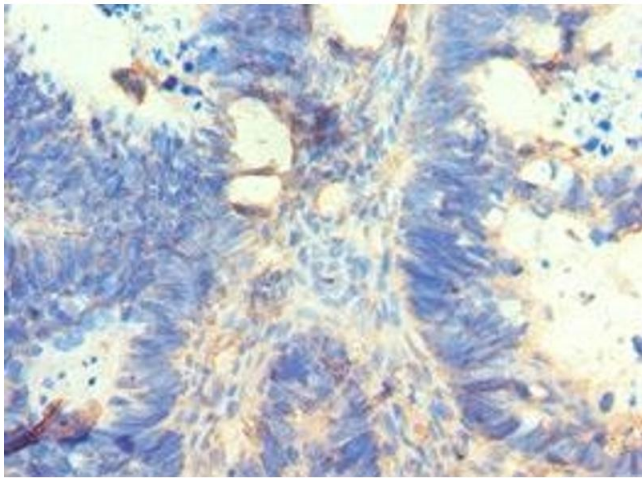
### Immunohistochemistry

**Image 1.** Immunohistochemistry of paraffin-embedded human pancreatic tissue using ABIN7162566 at dilution of 1:100



### Western Blotting

**Image 2.** Western blot All lanes: Pancreatic alpha-amylase antibody at 6 µg/mL + Mouse liver tissue Secondary Goat polyclonal to rabbit IgG at 1/10000 dilution Predicted band size: 58, 31 kDa Observed band size: 58 kDa



### Immunohistochemistry

**Image 3.** Immunohistochemistry of paraffin-embedded human ovarian cancer using ABIN7162566 at dilution of 1:100