

Datasheet for ABIN7162587
anti-Pannexin 2 antibody (AA 370-470)[Go to Product page](#)

3 Images

Overview

Quantity:	100 µg
Target:	Pannexin 2 (PANX2)
Binding Specificity:	AA 370-470
Reactivity:	Human
Host:	Rabbit
Clonality:	Polyclonal
Conjugate:	This Pannexin 2 antibody is un-conjugated
Application:	Western Blotting (WB), ELISA, Immunohistochemistry (IHC), Immunofluorescence (IF)

Product Details

Immunogen:	Recombinant Human Pannexin-2 protein (370-470AA)
Isotype:	IgG
Cross-Reactivity:	Human, Mouse, Rat
Purification:	>95%, Protein G purified

Target Details

Target:	Pannexin 2 (PANX2)
Alternative Name:	PANX2 (PANX2 Products)
Background:	Background: Structural component of the gap junctions and the hemichannels. Aliases: hPANX2 antibody, Pannexin 2 antibody, Pannexin-2 antibody, PANX 2 antibody, Panx2

Target Details

antibody, PANX2_HUMAN antibody, Px2 antibody

UniProt: [Q96RD6](#)

Application Details

Application Notes: Recommended dilution: WB:1:500-1:5000, IHC:1:200-1:500, IF:1:50-1:200,

Restrictions: For Research Use only

Handling

Format: Liquid

Buffer: Preservative: 0.03 % Proclin 300
Constituents: 50 % Glycerol, 0.01M PBS, pH 7.4

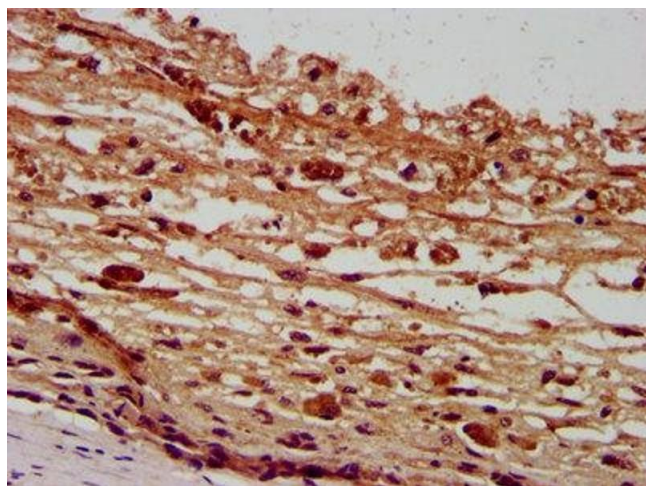
Preservative: ProClin

Precaution of Use: This product contains ProClin: a POISONOUS AND HAZARDOUS SUBSTANCE which should be handled by trained staff only.

Storage: -20 °C,-80 °C

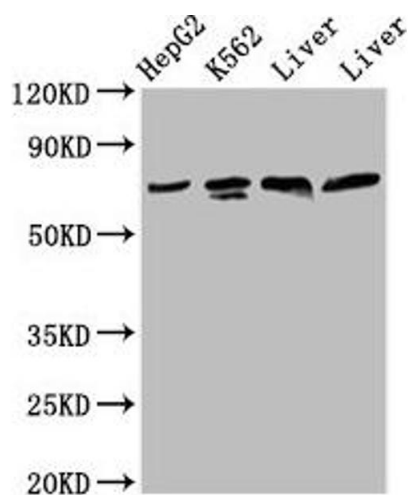
Storage Comment: Upon receipt, store at -20°C or -80°C. Avoid repeated freeze.

Images



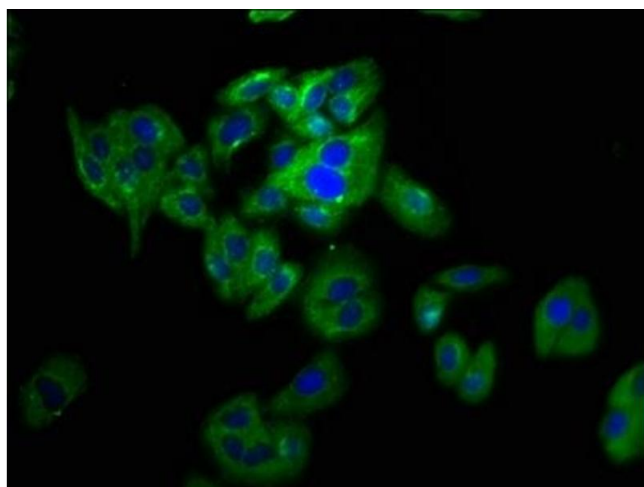
Immunohistochemistry

Image 1. IHC image of ABIN7162587 diluted at 1:400 and staining in paraffin-embedded human melanoma performed on a Leica Bond™ system. After dewaxing and hydration, antigen retrieval was mediated by high pressure in a citrate buffer (pH 6.0). Section was blocked with 10% normal goat serum 30min at RT. Then primary antibody (1% BSA) was incubated at 4°C overnight. The primary is detected by a biotinylated secondary antibody and visualized using an HRP conjugated SP system.



Western Blotting

Image 2. Western Blot Positive WB detected in: HepG2 whole cell lysate, K562 whole cell lysate, Rat liver tissue, Mouse liver tissue All lanes: PANX2 antibody at 4.2 µg/mL Secondary Goat polyclonal to rabbit IgG at 1/50000 dilution Predicted band size: 75, 71, 56 kDa Observed band size: 75 kDa



Immunofluorescence

Image 3. Immunofluorescence staining of HepG2 cells with ABIN7162587 at 1:133, counter-stained with DAPI. The cells were fixed in 4% formaldehyde, permeabilized using 0.2% Triton X-100 and blocked in 10% normal Goat Serum. The cells were then incubated with the antibody overnight at 4°C. The secondary antibody was Alexa Fluor 488-conjugated AffiniPure Goat Anti-Rabbit IgG(H+L).