



[Go to Product page](#)

Datasheet for ABIN7162659
anti-PARD3 antibody (AA 1068-1356)

4 Images

Overview

Quantity:	100 µg
Target:	PARD3
Binding Specificity:	AA 1068-1356
Reactivity:	Human
Host:	Rabbit
Clonality:	Polyclonal
Conjugate:	This PARD3 antibody is un-conjugated
Application:	Western Blotting (WB), ELISA, Immunohistochemistry (IHC), Immunofluorescence (IF)

Product Details

Immunogen:	Recombinant Human Partitioning defective 3 homolog protein (1068-1356AA)
Isotype:	IgG
Cross-Reactivity:	Human
Purification:	>95%, Protein G purified

Target Details

Target:	PARD3
Alternative Name:	PARD3 (PARD3 Products)
Background:	Background: Adapter protein involved in asymmetrical cell division and cell polarization processes. Seems to play a central role in the formation of epithelial tight junctions. Targets the

Target Details

phosphatase PTEN to cell junctions. Involved in Schwann cell peripheral myelination (By similarity). Association with PARD6B may prevent the interaction of PARD3 with F11R/JAM1, thereby preventing tight junction assembly. The PARD6-PARD3 complex links GTP-bound Rho small GTPases to atypical protein kinase C proteins. Required for establishment of neuronal polarity and normal axon formation in cultured hippocampal neurons.

Aliases: agouti signaling protein antibody, ASIP antibody, Atypical PKC isotype specific interacting protein antibody, Atypical PKC isotype-specific-interacting protein antibody, Baz antibody, bazooka antibody, Coagulation factor II receptor-like 2 antibody, CTCL tumor antigen se2-5 antibody, F2rl2 antibody, PAR-3 antibody, par-3 family cell polarity regulator alpha antibody, par-3 family cell polarity regulator antibody, PAR3 alpha antibody, par3 antibody, PAR3-alpha antibody, PARD-3 antibody, Pard3 antibody, PARD3_HUMAN antibody, PARD3A antibody, Partitioning defective 3 homolog antibody, Partitioning-defective 3 homolog antibody, Partitioning-defective protein 3, C. elegans, homolog of antibody, SE2-5L16 antibody, SE2-5LT1 antibody, SE2-5T2 antibody, Thrombin receptor-like 2 antibody

UniProt: [Q8TEW0](#)

Pathways: [Cell-Cell Junction Organization](#)

Application Details

Application Notes: Recommended dilution: WB:1:500-1:5000, IHC:1:100-1:1000, IF:1:50-1:500,

Restrictions: For Research Use only

Handling

Format: Liquid

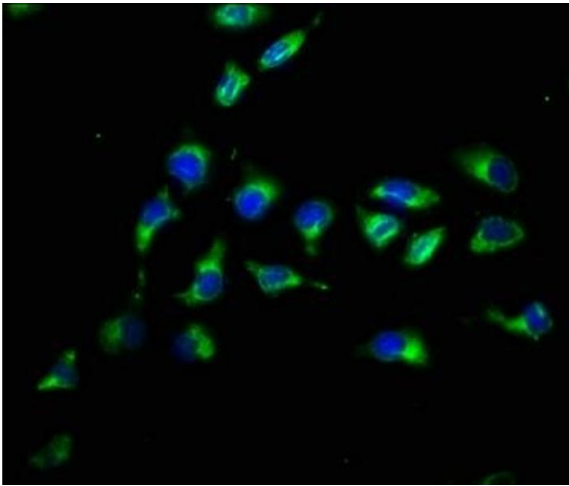
Buffer: Preservative: 0.03 % Proclin 300
Constituents: 50 % Glycerol, 0.01M PBS, PH 7.4

Preservative: ProClin

Precaution of Use: This product contains ProClin: a POISONOUS AND HAZARDOUS SUBSTANCE which should be handled by trained staff only.

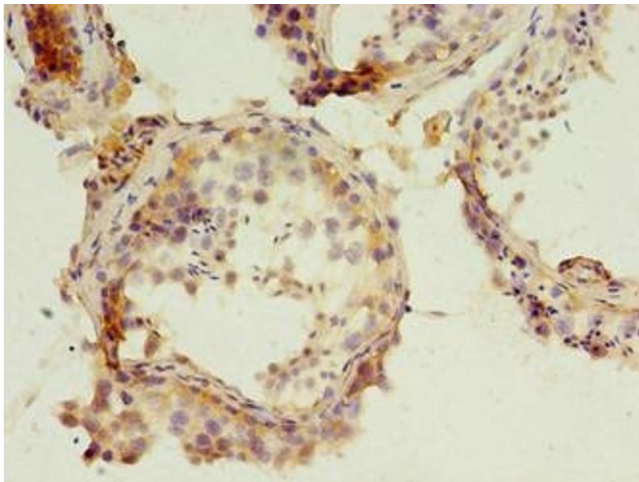
Storage: -20 °C,-80 °C

Storage Comment: Upon receipt, store at -20°C or -80°C. Avoid repeated freeze.



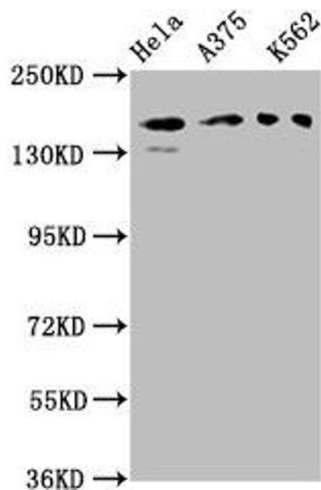
Immunofluorescence

Image 1. Immunofluorescence staining of A549 cells with ABIN7162659 at 1:200, counter-stained with DAPI. The cells were fixed in 4% formaldehyde, permeabilized using 0.2% Triton X-100 and blocked in 10% normal Goat Serum. The cells were then incubated with the antibody overnight at 4°C. The secondary antibody was Alexa Fluor 488-conjugated AffiniPure Goat Anti-Rabbit IgG(H+L).



Immunohistochemistry

Image 2. Immunohistochemistry of paraffin-embedded human testis tissue using ABIN7162659 at dilution of 1:100



Western Blotting

Image 3. Western Blot Positive WB detected in: HeLa whole cell lysate, A375 whole cell lysate, K562 whole cell lysate All lanes: PARD3 antibody at 3 µg/mL Secondary Goat polyclonal to rabbit IgG at 1/50000 dilution Predicted band size: 152, 142, 147, 139, 114, 109, 110, 150 kDa Observed band size: 152 kDa

Please check the [product details page](#) for more images. Overall 4 images are available for ABIN7162659.