

Datasheet for ABIN7162742  
**anti-SLC26A4 antibody (AA 592-655)**[Go to Product page](#)

## 3 Images

## Overview

Quantity:	100 µg
Target:	SLC26A4
Binding Specificity:	AA 592-655
Reactivity:	Human
Host:	Rabbit
Clonality:	Polyclonal
Conjugate:	This SLC26A4 antibody is un-conjugated
Application:	ELISA, Western Blotting (WB), Immunohistochemistry (IHC), Immunofluorescence (IF)

## Product Details

Immunogen:	Recombinant Human Pendrin protein (592-655AA)
Isotype:	IgG
Cross-Reactivity:	Human
Purification:	>95%, Protein G purified

## Target Details

Target:	SLC26A4
Alternative Name:	SLC26A4 ( <a href="#">SLC26A4 Products</a> )
Background:	Background: Sodium-independent transporter of chloride and iodide. Aliases: deafness, autosomal recessive 4 antibody, DFNB4 antibody, EVA antibody, NSRD4

## Target Details

antibody, PDS antibody, Pendred syndrome antibody, Pendred syndrome homolog antibody, Pendrin antibody, S26A4\_HUMAN antibody, SLC26A4 antibody, Sodium independent chloride/iodide transporter antibody, Sodium-independent chloride/iodide transporter antibody, Solute carrier family 26 member 4 antibody

UniProt: [O43511](#)

Pathways: [Thyroid Hormone Synthesis](#), [Sensory Perception of Sound](#)

## Application Details

Application Notes: Recommended dilution: WB:1:500-1:5000, IHC:1:500-1:1000, IF:1:50-1:200,

Restrictions: For Research Use only

## Handling

Format: Liquid

Buffer: Preservative: 0.03 % Proclin 300  
Constituents: 50 % Glycerol, 0.01M PBS, pH 7.4

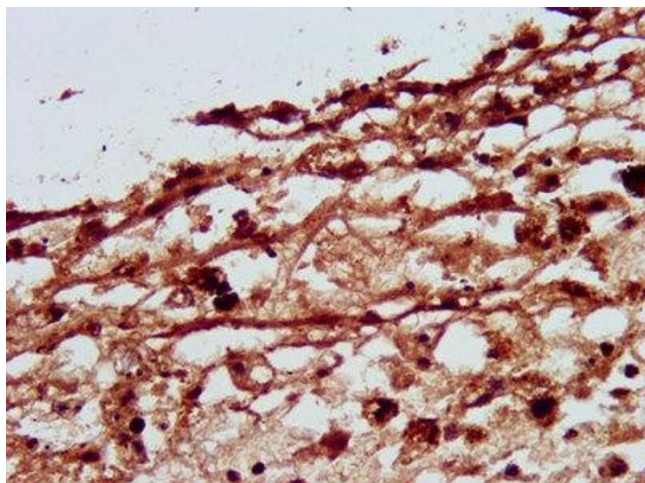
Preservative: ProClin

Precaution of Use: This product contains ProClin: a POISONOUS AND HAZARDOUS SUBSTANCE which should be handled by trained staff only.

Storage: -20 °C,-80 °C

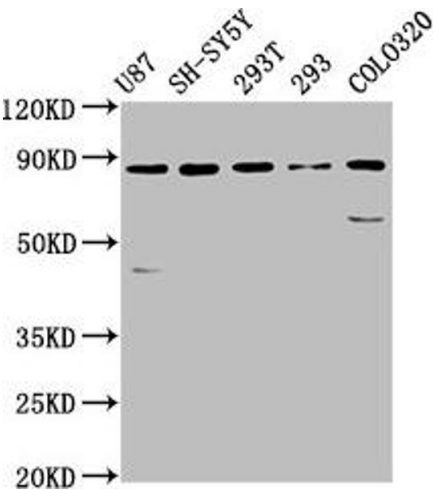
Storage Comment: Upon receipt, store at -20°C or -80°C. Avoid repeated freeze.

## Images



### Immunohistochemistry

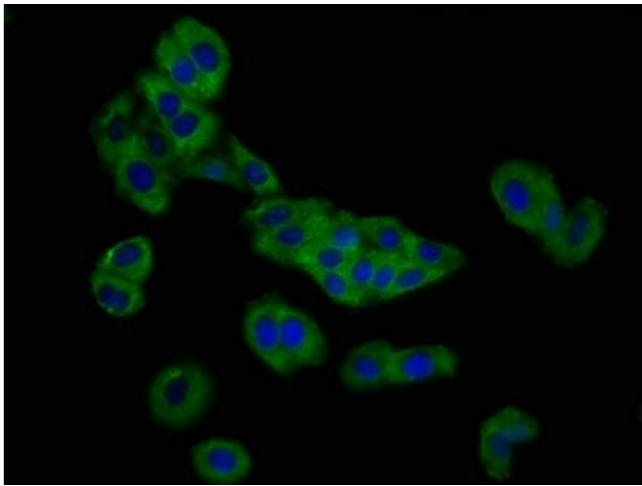
**Image 1.** IHC image of ABIN7162742 diluted at 1:500 and staining in paraffin-embedded human melanoma performed on a Leica Bond™ system. After dewaxing and hydration, antigen retrieval was mediated by high pressure in a citrate buffer (pH 6.0). Section was blocked with 10% normal goat serum 30min at RT. Then primary antibody (1% BSA) was incubated at 4°C overnight. The primary is detected by a biotinylated secondary antibody and visualized using an



HRP conjugated SP system.

### Western Blotting

**Image 2.** Western Blot Positive WB detected in: U87 whole cell lysate, SH-SY5Y whole cell lysate, 293T whole cell lysate, 293 whole cell lysate, Colo320 whole cell lysate All lanes: SLC26A4 antibody at 5.7 µg/mL Secondary Goat polyclonal to rabbit IgG at 1/50000 dilution Predicted band size: 86, 40 kDa Observed band size: 86 kDa



### Immunofluorescence

**Image 3.** Immunofluorescence staining of HepG2 cells with ABIN7162742 at 1:166, counter-stained with DAPI. The cells were fixed in 4% formaldehyde, permeabilized using 0.2% Triton X-100 and blocked in 10% normal Goat Serum. The cells were then incubated with the antibody overnight at 4°C. The secondary antibody was Alexa Fluor 488-conjugated AffiniPure Goat Anti-Rabbit IgG(H+L).