



[Go to Product page](#)

Datasheet for ABIN7162746
anti-PTCD2 antibody (AA 153-388)

2 Images

Overview

Quantity:	100 µg
Target:	PTCD2
Binding Specificity:	AA 153-388
Reactivity:	Human
Host:	Rabbit
Clonality:	Polyclonal
Conjugate:	This PTCD2 antibody is un-conjugated
Application:	Western Blotting (WB), ELISA, Immunohistochemistry (IHC)

Product Details

Immunogen:	Recombinant Human Pentatricopeptide repeat-containing protein 2, mitochondrial protein (153-388AA)
Isotype:	IgG
Cross-Reactivity:	Human, Mouse
Purification:	>95%, Protein G purified

Target Details

Target:	PTCD2
Alternative Name:	PTCD2 (PTCD2 Products)
Background:	Background: Involved in mitochondrial RNA maturation and mitochondrial respiratory chain

Target Details

function.

Aliases: Pentatricopeptide repeat domain 2 antibody, Pentatricopeptide repeat-containing protein 2 antibody, Pentatricopeptide repeat-containing protein 2 mitochondrial antibody, Ptdc2 antibody, PTCD2_HUMAN antibody

UniProt: [Q8WV60](#)

Application Details

Application Notes: Recommended dilution: WB:1:2000-1:5000, IHC:1:20-1:200,

Restrictions: For Research Use only

Handling

Format: Liquid

Buffer: Preservative: 0.03 % Proclin 300
Constituents: 50 % Glycerol, 0.01M PBS, PH 7.4

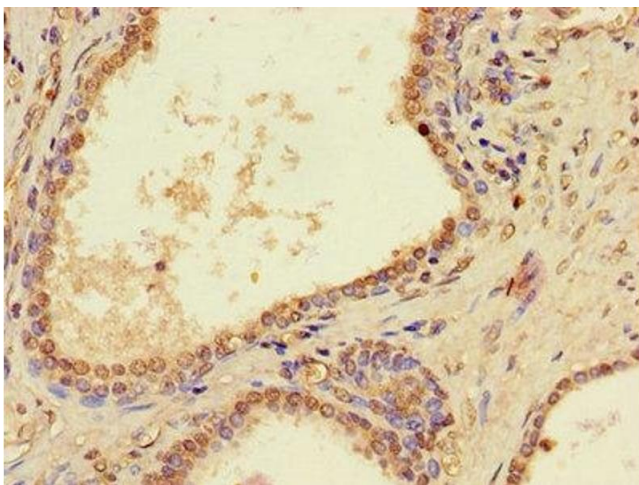
Preservative: ProClin

Precaution of Use: This product contains ProClin: a POISONOUS AND HAZARDOUS SUBSTANCE which should be handled by trained staff only.

Storage: -20 °C,-80 °C

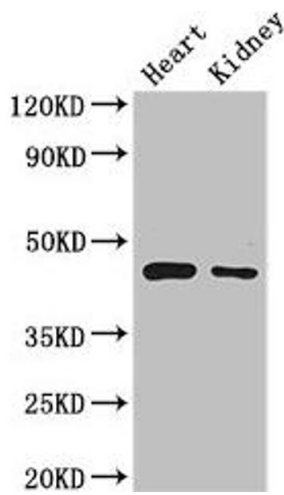
Storage Comment: Upon receipt, store at -20°C or -80°C. Avoid repeated freeze.

Images



Immunohistochemistry

Image 1. Immunohistochemistry of paraffin-embedded human prostate cancer using ABIN7162746 at dilution of 1:100



Western Blotting

Image 2. Western Blot Positive WB detected in: Mouse heart tissue, Mouse kidney tissue All lanes: PTC2 antibody at 2.7 µg/mL Secondary Goat polyclonal to rabbit IgG at 1/50000 dilution Predicted band size: 44, 25, 31 kDa Observed band size: 44 kDa