

Datasheet for ABIN7162786

anti-PAM antibody (AA 338-497)[Go to Product page](#)**4** Images

Overview

Quantity:	100 µg
Target:	PAM
Binding Specificity:	AA 338-497
Reactivity:	Human
Host:	Rabbit
Clonality:	Polyclonal
Conjugate:	This PAM antibody is un-conjugated
Application:	Western Blotting (WB), ELISA, Immunohistochemistry (IHC), Immunofluorescence (IF)

Product Details

Immunogen:	Recombinant Human Peptidyl-glycine alpha-amidating monooxygenase protein (338-497AA)
Isotype:	IgG
Cross-Reactivity:	Human
Purification:	>95%, Protein G purified

Target Details

Target:	PAM
Alternative Name:	PAM (PAM Products)
Background:	Background: Bifunctional enzyme that catalyzes 2 sequential steps in C-terminal alpha-amidation of peptides. The monooxygenase part produces an unstable peptidyl(2-

Target Details

hydroxyglycine) intermediate that is dismutated to glyoxylate and the corresponding desglycine peptide amide by the lyase part. C-terminal amidation of peptides such as neuropeptides is essential for full biological activity.

Aliases: AMD_HUMAN antibody, PAL antibody, PAM antibody, Pancreatic peptidylglycine alpha amidating monooxygenase antibody, Peptidyl alpha amidating enzyme antibody, Peptidyl alpha hydroxyglycine alpha amidating lyase antibody, Peptidyl-alpha-hydroxyglycine alpha-amidating lyase antibody, Peptidylamidoglycolate lyase antibody, Peptidylglycine 2 hydroxylase antibody, Peptidylglycine alpha amidating monooxygenase antibody, Peptidylglycine alpha hydroxylating monooxygenase antibody, PHM antibody

UniProt: [P19021](#)

Application Details

Application Notes: Recommended dilution: WB:1:500-1:5000, IHC:1:200-1:500, IF:1:50-1:200,

Restrictions: For Research Use only

Handling

Format: Liquid

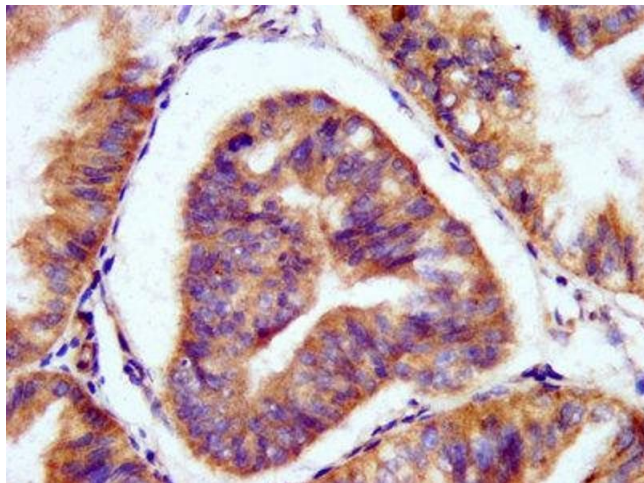
Buffer: Preservative: 0.03 % Proclin 300
Constituents: 50 % Glycerol, 0.01M PBS, pH 7.4

Preservative: ProClin

Precaution of Use: This product contains ProClin: a POISONOUS AND HAZARDOUS SUBSTANCE which should be handled by trained staff only.

Storage: -20 °C,-80 °C

Storage Comment: Upon receipt, store at -20°C or -80°C. Avoid repeated freeze.



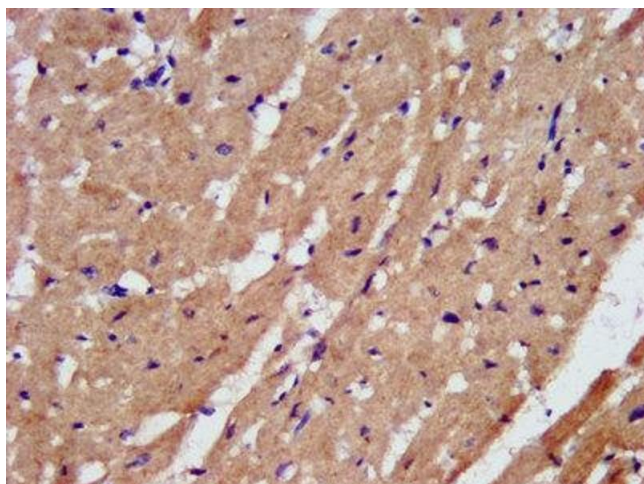
Immunohistochemistry

Image 1. IHC image of ABIN7162786 diluted at 1:200 and staining in paraffin-embedded human endometrial cancer performed on a Leica Bond™ system. After dewaxing and hydration, antigen retrieval was mediated by high pressure in a citrate buffer (pH 6.0). Section was blocked with 10% normal goat serum 30min at RT. Then primary antibody (1% BSA) was incubated at 4°C overnight. The primary is detected by a biotinylated secondary antibody and visualized using an HRP conjugated SP system.



Western Blotting

Image 2. Western Blot Positive WB detected in: HeLa whole cell lysate All lanes: PAM antibody at 5.6 µg/mL Secondary Goat polyclonal to rabbit IgG at 1/50000 dilution Predicted band size: 109, 97, 101, 99, 107 kDa Observed band size: 109 kDa



Immunohistochemistry

Image 3. IHC image of ABIN7162786 diluted at 1:200 and staining in paraffin-embedded human heart tissue performed on a Leica Bond™ system. After dewaxing and hydration, antigen retrieval was mediated by high pressure in a citrate buffer (pH 6.0). Section was blocked with 10% normal goat serum 30min at RT. Then primary antibody (1% BSA) was incubated at 4°C overnight. The primary is detected by a biotinylated secondary antibody and visualized using an HRP conjugated SP system.

Please check the [product details page](#) for more images. Overall 4 images are available for ABIN7162786.