

Datasheet for ABIN7162794
anti-PPIAL4G antibody (AA 1-164)



[Go to Product page](#)

2 Images

Overview

Quantity:	100 µg
Target:	PPIAL4G
Binding Specificity:	AA 1-164
Reactivity:	Human
Host:	Rabbit
Clonality:	Polyclonal
Conjugate:	This PPIAL4G antibody is un-conjugated
Application:	ELISA, Western Blotting (WB), Immunohistochemistry (IHC)

Product Details

Immunogen:	Recombinant Human Peptidyl-prolyl cis-trans isomerase A-like 4G protein (1-164AA)
Isotype:	IgG
Cross-Reactivity:	Human, Mouse
Purification:	>95%, Protein G purified

Target Details

Target:	PPIAL4G
Alternative Name:	PPIAL4G (PPIAL4G Products)
Background:	Background: PPIases accelerate the folding of proteins. It catalyzes the cis-trans isomerization of proline imidic peptide bonds in oligopeptides.

Target Details

Aliases: PPIAL4G antibody, Peptidyl-prolyl cis-trans isomerase A-like 4G antibody, PPIase A-like 4G antibody, EC 5.2.1.8 antibody, Peptidylprolyl cis-trans isomerase A-like 4 antibody

UniProt: [P0DN37](#)

Application Details

Application Notes: Recommended dilution: WB:1:500-1:5000, IHC:1:20-1:200,

Restrictions: For Research Use only

Handling

Format: Liquid

Buffer: Preservative: 0.03 % Proclin 300
Constituents: 50 % Glycerol, 0.01M PBS, PH 7.4

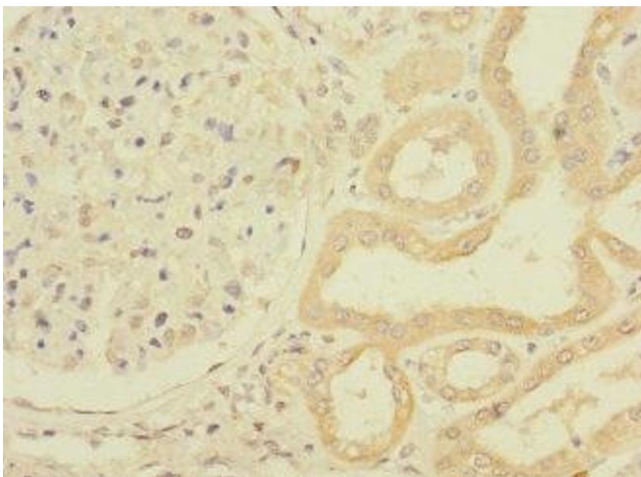
Preservative: ProClin

Precaution of Use: This product contains ProClin: a POISONOUS AND HAZARDOUS SUBSTANCE which should be handled by trained staff only.

Storage: -20 °C,-80 °C

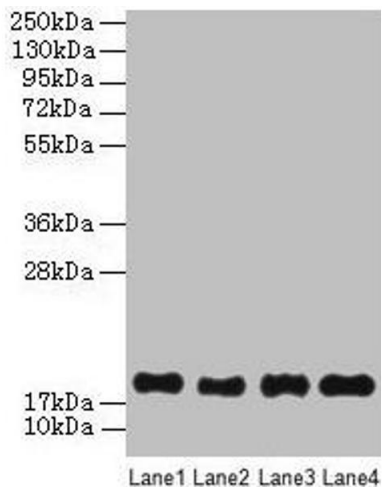
Storage Comment: Upon receipt, store at -20°C or -80°C. Avoid repeated freeze.

Images



Immunohistochemistry

Image 1. Immunohistochemistry of paraffin-embedded human kidney tissue using ABIN7162794 at dilution of 1:100



Western Blotting

Image 2. Western Blot All lanes: PPIAL4G antibody at 6 μ g/mL Lane 1: Mouse liver tissue Lane 2: Mouse spleen tissue Lane 3: Mouse lung tissue Lane 4: Mouse kidney tissue Secondary Goat polyclonal to rabbit IgG at 1/10000 dilution Predicted band size: 19 kDa Observed band size: 19 kDa