

Datasheet for ABIN7162805
anti-PPIE antibody (AA 86-141)[Go to Product page](#)

2 Images

Overview

Quantity:	100 µg
Target:	PPIE
Binding Specificity:	AA 86-141
Reactivity:	Human
Host:	Rabbit
Clonality:	Polyclonal
Conjugate:	This PPIE antibody is un-conjugated
Application:	ELISA, Immunohistochemistry (IHC)

Product Details

Immunogen:	Recombinant Human Peptidyl-prolyl cis-trans isomerase E protein (86-141AA)
Isotype:	IgG
Cross-Reactivity:	Human
Purification:	>95%, Protein G purified

Target Details

Target:	PPIE
Alternative Name:	PPIE (PPIE Products)
Background:	Background: PPIases accelerate the folding of proteins. It catalyzes the cis-trans isomerization of proline imidic peptide bonds in oligopeptides. Combines RNA-binding and PPIase activities.

Target Details

May be involved in muscle- and brain-specific processes. May be involved in pre-mRNA splicing.

Aliases: Ab1-210 antibody, Cyclophilin 33 antibody, Cyclophilin E antibody, Cyclophilin-33 antibody, CYP 33 antibody, CYP33 antibody, EC 5.2.1.8 antibody, Peptidyl prolyl cis trans isomerase E antibody, Peptidyl-prolyl cis-trans isomerase E antibody, Peptidylprolyl isomerase E (cyclophilin E) antibody, Peptidylprolyl isomerase E antibody, PPlase E antibody, PPIE antibody, PPIE_HUMAN antibody, Rotamase E antibody

UniProt: [Q9UNP9](#)

Application Details

Application Notes: Recommended dilution: IHC:1:200-1:500,

Restrictions: For Research Use only

Handling

Format: Liquid

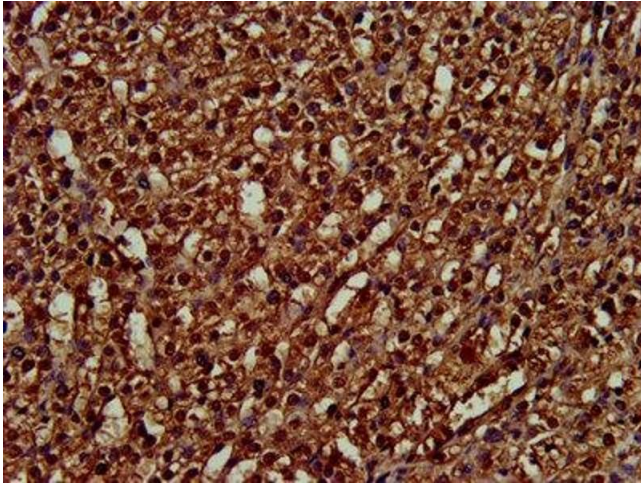
Buffer: Preservative: 0.03 % Proclin 300
Constituents: 50 % Glycerol, 0.01M PBS, pH 7.4

Preservative: ProClin

Precaution of Use: This product contains ProClin: a POISONOUS AND HAZARDOUS SUBSTANCE which should be handled by trained staff only.

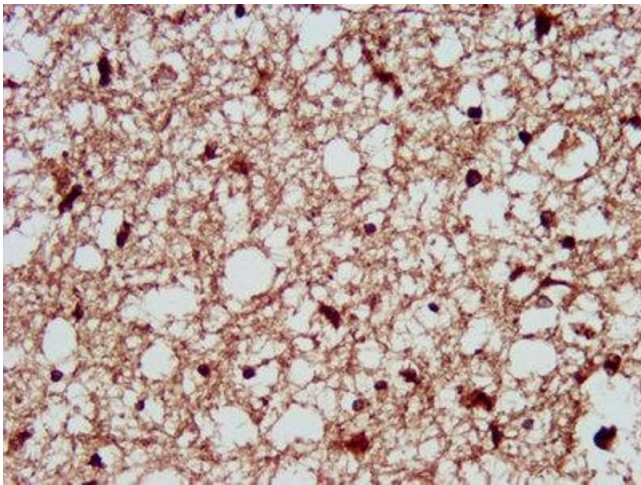
Storage: -20 °C, -80 °C

Storage Comment: Upon receipt, store at -20°C or -80°C. Avoid repeated freeze.



Immunohistochemistry

Image 1. IHC image of ABIN7162805 diluted at 1:300 and staining in paraffin-embedded human adrenal gland tissue performed on a Leica Bond™ system. After dewaxing and hydration, antigen retrieval was mediated by high pressure in a citrate buffer (pH 6.0). Section was blocked with 10% normal goat serum 30min at RT. Then primary antibody (1% BSA) was incubated at 4°C overnight. The primary is detected by a biotinylated secondary antibody and visualized using an HRP conjugated SP system.



Immunohistochemistry

Image 2. IHC image of ABIN7162805 diluted at 1:300 and staining in paraffin-embedded human brain tissue performed on a Leica Bond™ system. After dewaxing and hydration, antigen retrieval was mediated by high pressure in a citrate buffer (pH 6.0). Section was blocked with 10% normal goat serum 30min at RT. Then primary antibody (1% BSA) was incubated at 4°C overnight. The primary is detected by a biotinylated secondary antibody and visualized using an HRP conjugated SP system.