

[Go to Product page](#)

Datasheet for ABIN7162809

anti-PPIF antibody (AA 30-207)**2** Images

Overview

Quantity:	100 µL
Target:	PPIF
Binding Specificity:	AA 30-207
Reactivity:	Human
Host:	Rabbit
Clonality:	Polyclonal
Conjugate:	This PPIF antibody is un-conjugated
Application:	Western Blotting (WB), Immunohistochemistry (IHC), ELISA

Product Details

Immunogen:	Recombinant Human Peptidyl-prolyl cis-trans isomerase F, mitochondrial protein (30-207AA)
Isotype:	IgG
Cross-Reactivity:	Human
Purification:	Antigen Affinity Purified

Target Details

Target:	PPIF
Alternative Name:	PPIF (PPIF Products)
Background:	Background: PPIases accelerate the folding of proteins. It catalyzes the cis-trans isomerization of proline imidic peptide bonds in oligopeptides. Involved in regulation of the mitochondrial

Target Details

permeability transition pore (mPTP). It is proposed that its association with the mPTP is masking a binding site for inhibiting inorganic phosphate (Pi) and promotes the open probability of the mPTP leading to apoptosis or necrosis, the requirement of the PPIase activity for this function is debated. In cooperation with mitochondrial TP53 is involved in activating oxidative stress-induced necrosis. Involved in modulation of mitochondrial membrane F(1)F(0) ATP synthase activity and regulation of mitochondrial matrix adenine nucleotide levels. Has anti-apoptotic activity independently of mPTP and in cooperation with BCL2 inhibits cytochrome c-dependent apoptosis.

Aliases: Cyclophilin 3 antibody, cyclophilin D antibody, Cyclophilin F antibody, Cyp D antibody, CyP M antibody, CyP-D antibody, CyP-M antibody, CYP3 antibody, CypD antibody, hCyP3 antibody, mitochondrial antibody, Mitochondrial cyclophilin antibody, Peptidyl prolyl cis trans isomerase, mitochondrial antibody, Peptidyl-prolyl cis-trans isomerase F antibody, Peptidyl-prolyl cis-trans isomerase F, mitochondrial antibody, Peptidylprolyl isomerase F (cyclophilin F) antibody, Peptidylprolyl isomerase F antibody, PPIase antibody, PPIase F antibody, Ppif antibody, PPIF_HUMAN antibody, Rotamase antibody, Rotamase F antibody

UniProt: [P30405](#)

Pathways: [Proton Transport](#), [Negative Regulation of intrinsic apoptotic Signaling](#), [Negative Regulation of Transporter Activity](#)

Application Details

Application Notes: Recommended dilution: WB:1:1000-1:5000, IHC:1:20-1:200,

Restrictions: For Research Use only

Handling

Format: Liquid

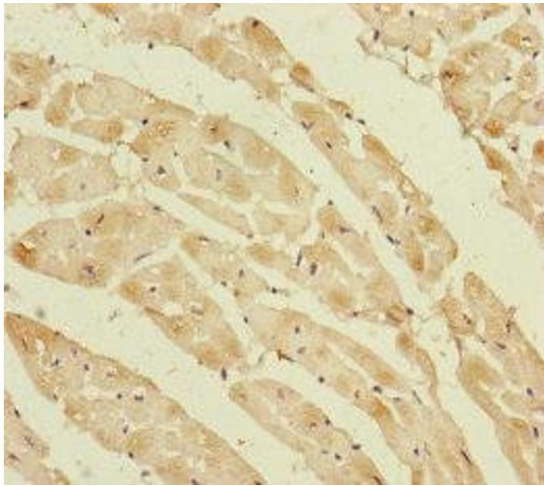
Buffer: PBS with 0.02 % sodium azide, 50 % glycerol, pH 7.3.

Preservative: Sodium azide

Precaution of Use: This product contains Sodium azide: a POISONOUS AND HAZARDOUS SUBSTANCE which should be handled by trained staff only.

Storage: -20 °C,-80 °C

Storage Comment: Upon receipt, store at -20°C or -80°C. Avoid repeated freeze.



Immunohistochemistry

Image 1. Immunohistochemistry of paraffin-embedded human heart tissue using ABIN7162809 at dilution of 1:100



Western Blotting

Image 2. Western blot All lanes: PPIF antibody at 5.65 μ g/mL + 293T whole cell lysate Secondary Goat polyclonal to rabbit IgG at 1/10000 dilution Predicted band size: 23, 17 kDa Observed band size: 23 kDa