



Datasheet for ABIN7162823
anti-FKBP1A antibody (AA 2-103)



[Go to Product page](#)

3 Images

Overview

Quantity:	100 µg
Target:	FKBP1A
Binding Specificity:	AA 2-103
Reactivity:	Human
Host:	Rabbit
Clonality:	Polyclonal
Application:	Western Blotting (WB), Immunohistochemistry (IHC), ELISA, Immunofluorescence (IF)

Product Details

Immunogen:	Recombinant Human Peptidyl-prolyl cis-trans isomerase FKBP1A protein (2-103AA)
Isotype:	IgG
Cross-Reactivity:	Human
Purification:	>95%, Protein G purified

Target Details

Target:	FKBP1A
Alternative Name:	FKBP1A (FKBP1A Products)
Background:	Background: May play a role in modulation of ryanodine receptor isoform-1 (RYR-1), a component of the calcium release channel of skeletal muscle sarcoplasmic reticulum. There are four molecules of FKBP12 per skeletal muscle RYR. PPIases accelerate the folding of proteins. It catalyzes the cis-trans isomerization of proline imidic peptide bonds in

Target Details

oligopeptides.

Aliases: 12 kDa FK506-binding protein antibody, 12 kDa FKBP antibody, Calstabin 1 antibody, FK506 binding protein 1 antibody, FK506 binding protein 12 antibody, FK506 binding protein 1A (12kD) antibody, FK506 binding protein 1A 12 kDa antibody, FK506 binding protein 1A antibody, FK506 binding protein T cell 12 kD antibody, FK506 binding protein, T cell, 12 kD antibody, FK506 binding protein12 antibody, FK506-binding protein 1A antibody, FKB1A_HUMAN antibody, FKBP 12 antibody, FKBP 1A antibody, FKBP-12 antibody, FKBP-1A antibody, FKBP1 antibody, FKBP12 antibody, FKBP12 Exip3 antibody, FKBP12C antibody, fkbp1a antibody, Immunophilin FKBP12 antibody, Peptidyl prolyl cis trans isomerase antibody, Peptidyl-prolyl cis-trans isomerase FKBP1A antibody, PKC12 antibody, PKC12 antibody, PPIase antibody, PPIase FKBP1A antibody, Protein kinase C inhibitor 2 antibody, Rotamase antibody

UniProt: [P62942](#)

Pathways: [Negative Regulation of Transporter Activity](#), [Methionine Biosynthetic Process](#)

Application Details

Application Notes: Recommended dilution: WB:1:500-1:2000, IHC:1:20-1:200, IF:1:50-1:200,

Restrictions: For Research Use only

Handling

Format: Liquid

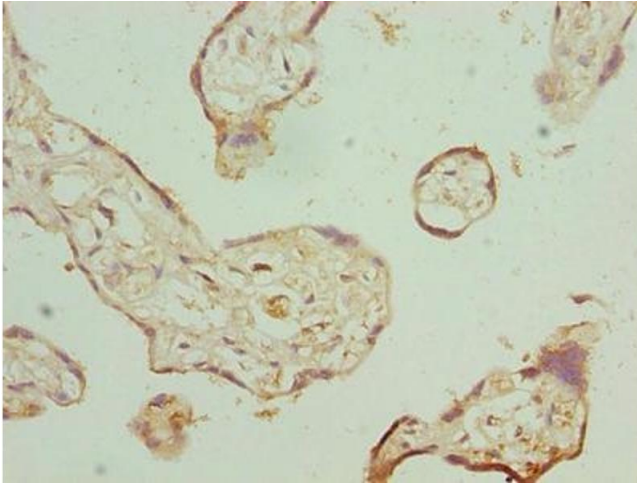
Buffer: Preservative: 0.03 % Proclin 300
Constituents: 50 % Glycerol, 0.01M PBS, PH 7.4

Preservative: ProClin

Precaution of Use: This product contains ProClin: a POISONOUS AND HAZARDOUS SUBSTANCE which should be handled by trained staff only.

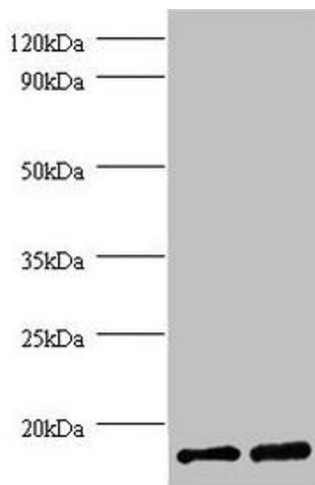
Storage: -20 °C,-80 °C

Storage Comment: Upon receipt, store at -20°C or -80°C. Avoid repeated freeze.



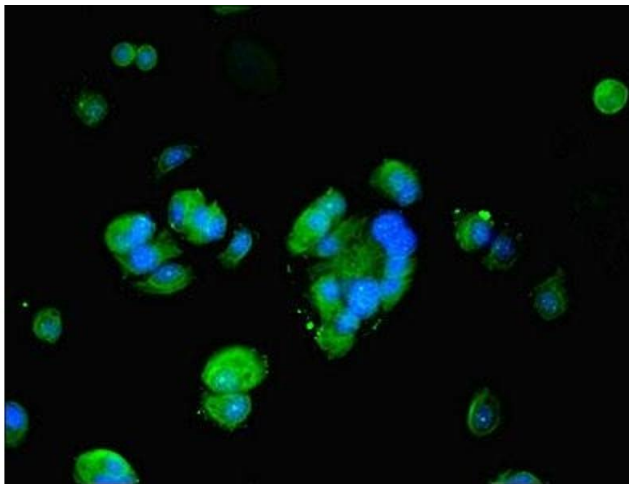
Immunohistochemistry

Image 1. Immunohistochemistry of paraffin-embedded human placenta tissue using ABIN7162823 at dilution of 1:100



Western Blotting

Image 2. Western blot All lanes: FKBP1A antibody at 2 μ g/mL Lane 1: EC109 whole cell lysate Lane 2: 293T whole cell lysate Secondary Goat polyclonal to rabbit IgG at 1/15000 dilution Predicted band size: 12 kDa Observed band size: 12 kDa



Immunofluorescence

Image 3. Immunofluorescent analysis of MCF-7 cells using ABIN7162823 at dilution of 1:100 and Alexa Fluor 488-conjugated AffiniPure Goat Anti-Rabbit IgG(H+L)