



[Go to Product page](#)

Datasheet for ABIN7162832  
**anti-FKBP2 antibody (AA 22-142)**

2 Images

Overview

Quantity:	100 µL
Target:	FKBP2
Binding Specificity:	AA 22-142
Reactivity:	Human
Host:	Rabbit
Clonality:	Polyclonal
Conjugate:	This FKBP2 antibody is un-conjugated
Application:	Western Blotting (WB), Immunohistochemistry (IHC), ELISA

Product Details

Immunogen:	Recombinant Human Peptidyl-prolyl cis-trans isomerase FKBP2 protein (22-142AA)
Isotype:	IgG
Cross-Reactivity:	Human, Mouse, Rat
Purification:	Antigen Affinity Purified

Target Details

Target:	FKBP2
Alternative Name:	FKBP2 ( <a href="#">FKBP2 Products</a> )
Background:	Background: PPIases accelerate the folding of proteins. It catalyzes the cis-trans isomerization of proline imidic peptide bonds in oligopeptides.

## Target Details

---

Aliases: 13 kDa FK506-binding protein antibody, 13 kDa FKBP antibody, EC 5.2.1.8 antibody, FK506 binding protein 2 (13kD) antibody, FK506 binding protein 2 13 kDa antibody, FK506-binding protein 2 antibody, FK506-binding protein, T-cell, 13-KD antibody, FKBP 13 antibody, FKBP 2 antibody, FKBP-13 antibody, FKBP-2 antibody, FKBP13 antibody, FKBP2 antibody, FKBP2\_HUMAN antibody, Immunophilin FKBP13 antibody, Peptidyl prolyl cis trans isomerase antibody, Peptidyl-prolyl cis-trans isomerase FKBP2 antibody, PPlase antibody, PPlase FKBP2 antibody, Proline isomerase antibody, Rapamycin binding protein antibody, Rotamase antibody

UniProt: [P26885](#)

## Application Details

---

Application Notes: Recommended dilution: WB:1:200-1:1000, IHC:1:20-1:200,

Restrictions: For Research Use only

## Handling

---

Format: Liquid

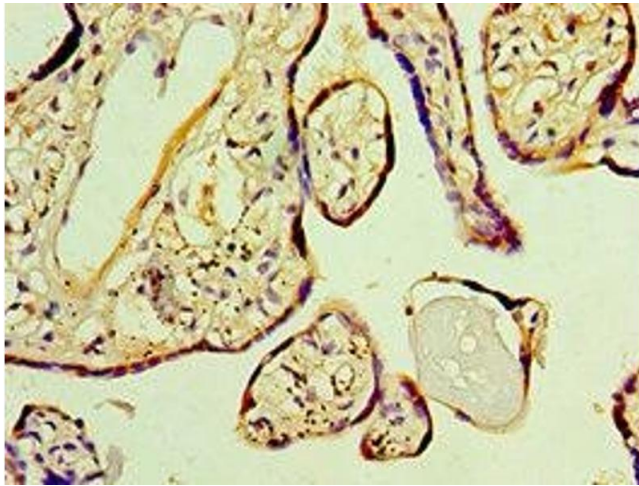
Buffer: PBS with 0.02 % sodium azide, 50 % glycerol, pH 7.3.

Preservative: Sodium azide

Precaution of Use: This product contains Sodium azide: a POISONOUS AND HAZARDOUS SUBSTANCE which should be handled by trained staff only.

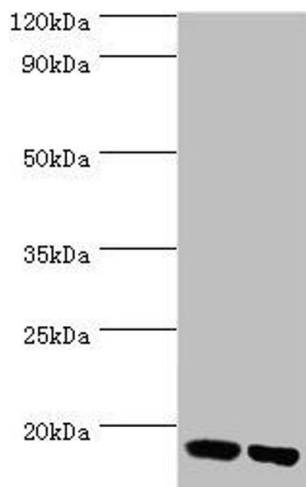
Storage: -20 °C,-80 °C

Storage Comment: Upon receipt, store at -20°C or -80°C. Avoid repeated freeze.



### Immunohistochemistry

**Image 1.** Immunohistochemistry of paraffin-embedded human placenta tissue using ABIN7162832 at dilution of 1:100



### Western Blotting

**Image 2.** Western blot All lanes: Peptidyl-prolyl cis-trans isomerase FKBP2 antibody at 10 µg/mL Lane 1: Mouse thymus tissue Lane 2: Rat brain tissue Secondary Goat polyclonal to rabbit IgG at 1/10000 dilution Predicted band size: 16 kDa Observed band size: 16 kDa