

Datasheet for ABIN7162843
anti-FKBP8 antibody (AA 58-190)

3 Images

[Go to Product page](#)

Overview

Quantity:	100 µg
Target:	FKBP8
Binding Specificity:	AA 58-190
Reactivity:	Human
Host:	Rabbit
Clonality:	Polyclonal
Conjugate:	This FKBP8 antibody is un-conjugated
Application:	Western Blotting (WB), ELISA, Immunohistochemistry (IHC)

Product Details

Immunogen:	Recombinant Human Peptidyl-prolyl cis-trans isomerase FKBP8 protein (58-190AA)
Isotype:	IgG
Cross-Reactivity:	Human, Mouse
Purification:	>95%, Protein G purified

Target Details

Target:	FKBP8
Alternative Name:	FKBP8 (FKBP8 Products)
Background:	Background: Constitutively inactive PPIase, which becomes active when bound to calmodulin and calcium. Seems to act as a chaperone for BCL2, targets it to the mitochondria and

Target Details

modulates its phosphorylation state. The BCL2/FKBP8/calmodulin/calcium complex probably interferes with the binding of BCL2 to its targets. The active form of FKBP8 may therefore play a role in the regulation of apoptosis.

Aliases: 38 kDa FK506-binding protein antibody, 38 kDa FKBP antibody, 38 kDa antibody, FK506 binding protein 8 antibody, FK506 binding protein 8, 38 kDa antibody, FK506 binding protein, 38 kDa antibody, FK506-binding protein 8 antibody, FKBP 38 antibody, FKBP-38 antibody, FKBP-8 antibody, Fkbp8 antibody, FKBP8_HUMAN antibody, FKBP8 antibody, hFKBP38 antibody, Peptidyl-prolyl cis-trans isomerase FKBP8 antibody, PPIase FKBP8 antibody, Rotamase antibody, Sam11 antibody

UniProt: [Q14318](#)

Pathways: [Autophagy](#)

Application Details

Application Notes: Recommended dilution: WB:1:500-1:5000, IHC:1:20-1:200,

Restrictions: For Research Use only

Handling

Format: Liquid

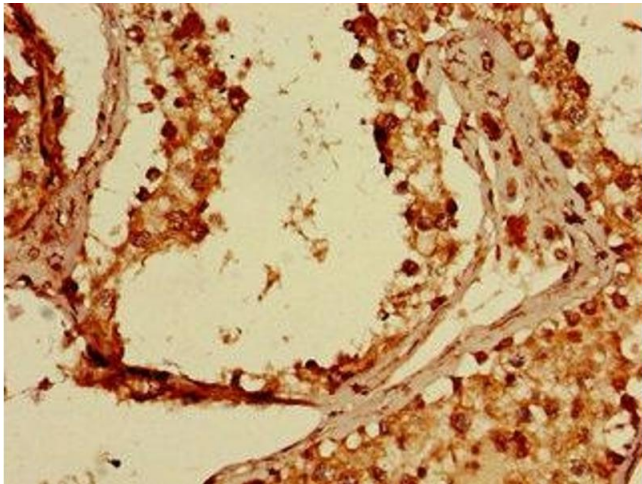
Buffer: Preservative: 0.03 % Proclin 300
Constituents: 50 % Glycerol, 0.01M PBS, PH 7.4

Preservative: ProClin

Precaution of Use: This product contains ProClin: a POISONOUS AND HAZARDOUS SUBSTANCE which should be handled by trained staff only.

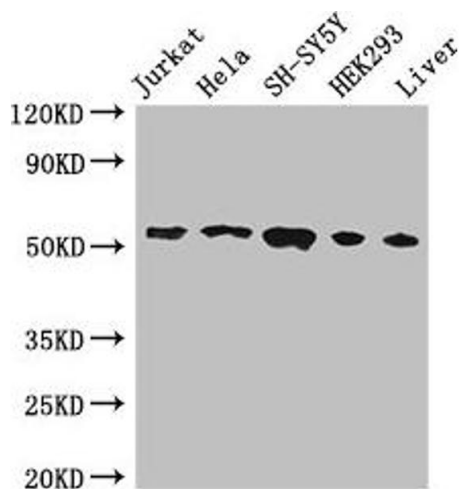
Storage: -20 °C,-80 °C

Storage Comment: Upon receipt, store at -20°C or -80°C. Avoid repeated freeze.



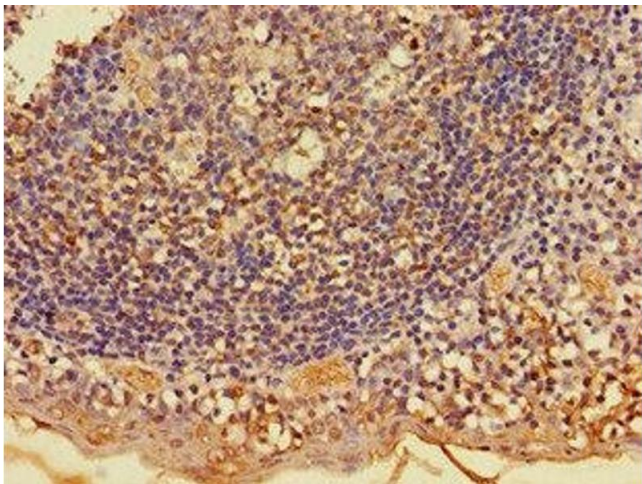
Immunohistochemistry

Image 1. Immunohistochemistry of paraffin-embedded human testis tissue using ABIN7162843 at dilution of 1:100



Western Blotting

Image 2. Western Blot Positive WB detected in: Jurkat whole cell lysate, Hela whole cell lysate, SH-SY5Y whole cell lysate, HEK293 whole cell lysate, Mouse liver tissue All lanes: FKBP8 antibody at 3 µg/mL Secondary Goat polyclonal to rabbit IgG at 1/50000 dilution Predicted band size: 45, 28 kDa Observed band size: 55 kDa



Immunohistochemistry

Image 3. Immunohistochemistry of paraffin-embedded human tonsil tissue using ABIN7162843 at dilution of 1:100