

Datasheet for ABIN7162855
anti-PIN4 antibody (AA 1-131)

3 Images

[Go to Product page](#)

Overview

Quantity:	100 µg
Target:	PIN4
Binding Specificity:	AA 1-131
Reactivity:	Human
Host:	Rabbit
Clonality:	Polyclonal
Conjugate:	This PIN4 antibody is un-conjugated
Application:	Western Blotting (WB), ELISA, Immunohistochemistry (IHC), Immunofluorescence (IF)

Product Details

Immunogen:	Recombinant Human Peptidyl-prolyl cis-trans isomerase NIMA-interacting 4 protein (1-131AA)
Isotype:	IgG
Cross-Reactivity:	Human, Mouse, Rat
Purification:	>95%, Protein G purified

Target Details

Target:	PIN4
Alternative Name:	PIN4 (PIN4 Products)
Background:	Background: Isoform 1 is involved as a ribosomal RNA processing factor in ribosome biogenesis. Binds to tightly bent AT-rich stretches of double-stranded DNA.

Target Details

Aliases: EPVH antibody, Eukaryotic parvulin homolog antibody, hEPVH antibody, hPar14 antibody, hPar17 antibody, MGC138486 antibody, OTTHUMP00000023527 antibody, OTTHUMP000000217483 antibody, OTTHUMP000000217485 antibody, Par14 antibody, Par17 antibody, Parvulin 14 antibody, Parvulin-14 antibody, Parvulin-17 antibody, Peptidyl prolyl cis trans isomerase NIMA interacting 4 antibody, Peptidyl prolyl cis/trans isomerase EPVH antibody, Peptidyl-prolyl cis-trans isomerase NIMA-interacting 4 antibody, Peptidyl-prolyl cis-trans isomerase PIN4 antibody, Peptidyl-prolyl cis/trans isomerase EPVH antibody, PIN4 antibody, PIN4_HUMAN antibody, PPlase Pin4 antibody, Protein (peptidylprolyl cis/trans isomerase) NIMA interacting, 4 (parvulin) antibody, Rotamase Pin4 antibody

UniProt: [Q9Y237](#)

Application Details

Application Notes: Recommended dilution: WB:1:500-1:5000, IHC:1:500-1:1000, IF:1:200-1:500,

Restrictions: For Research Use only

Handling

Format: Liquid

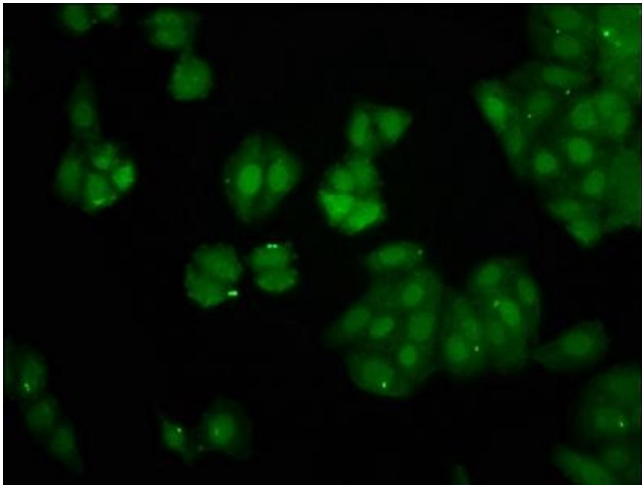
Buffer: Preservative: 0.03 % Proclin 300
Constituents: 50 % Glycerol, 0.01M PBS, pH 7.4

Preservative: ProClin

Precaution of Use: This product contains ProClin: a POISONOUS AND HAZARDOUS SUBSTANCE which should be handled by trained staff only.

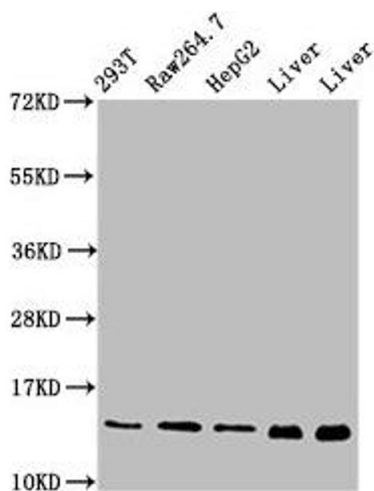
Storage: -20 °C,-80 °C

Storage Comment: Upon receipt, store at -20°C or -80°C. Avoid repeated freeze.



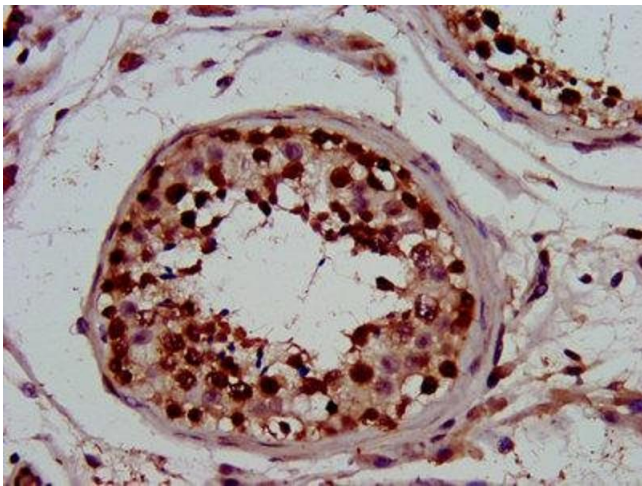
Immunofluorescence

Image 1. Immunofluorescence staining of HepG2 cells with ABIN7162855 at 1:266, counter-stained with DAPI. The cells were fixed in 4% formaldehyde, permeabilized using 0.2% Triton X-100 and blocked in 10% normal Goat Serum. The cells were then incubated with the antibody overnight at 4°C. The secondary antibody was Alexa Fluor 488-conjugated AffiniPure Goat Anti-Rabbit IgG(H+L).



Western Blotting

Image 2. Western Blot Positive WB detected in: 293T whole cell lysate, RAW264.7 whole cell lysate, HepG2 whole cell lysate, Rat liver tissue, Mouse liver tissue All lanes: PIN4 antibody at 5 µg/mL Secondary Goat polyclonal to rabbit IgG at 1/50000 dilution Predicted band size: 14, 17 kDa Observed band size: 14 kDa



Immunohistochemistry

Image 3. IHC image of ABIN7162855 diluted at 1:800 and staining in paraffin-embedded human testis tissue performed on a Leica Bond™ system. After dewaxing and hydration, antigen retrieval was mediated by high pressure in a citrate buffer (pH 6.0). Section was blocked with 10% normal goat serum 30min at RT. Then primary antibody (1% BSA) was incubated at 4°C overnight. The primary is detected by a biotinylated secondary antibody and visualized using an HRP conjugated SP system.